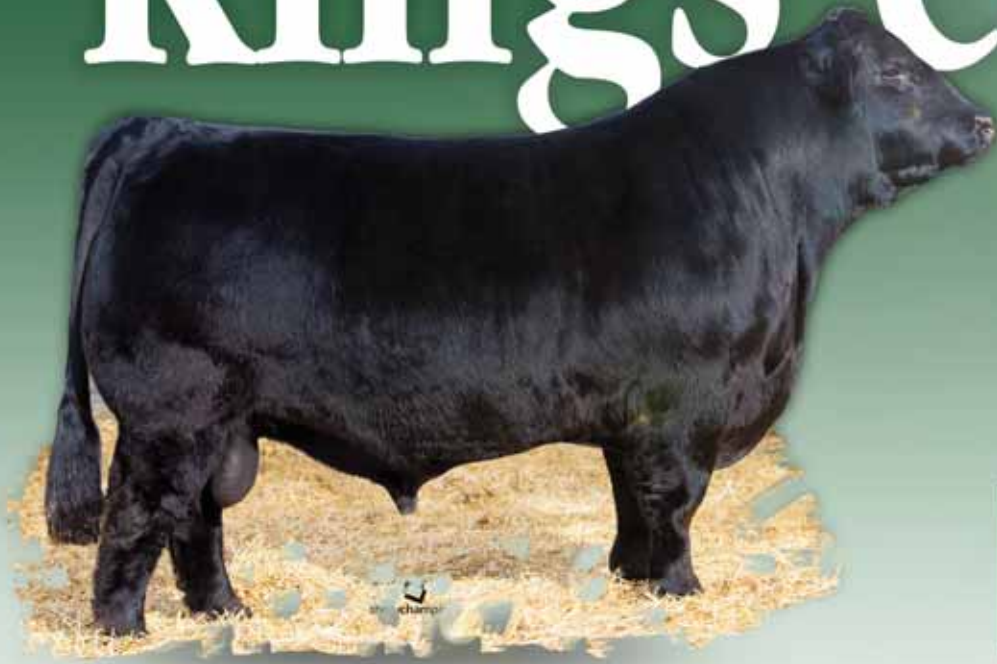


# kings court

ONLINE SALE

02.12.2021

[www.Limousin365.com](http://www.Limousin365.com)



**DAVIS**  
*Ranches*



325.647.7681 | [davislimousin@gmail.com](mailto:davislimousin@gmail.com) | 12500 Hwy. 279 | Brownwood, TX 76801

“KING’S COURT” ONLINE SALE

02.12.2021

Opening at 7:00 a.m. C.S.T. and closes at 7:00 p.m. C.S.T.  
with a horse-race style close out.

Bid online at [www.Limousin365.com](http://www.Limousin365.com)

# SALE DAY INFORMATION

## Owner & cattle management sale day phones ~

Brad Davis, 325.647.7681  
Davislimousin@gmail.com

Corey Sanchez, 325.792.8439  
csanchez4114@hotmail.com

## Marketing sale day phones ~



### SALE MANAGEMENT

Randall O. Ratliff, 615.330.2735  
Randy@rrmktg.com



### SALE CONSULTANT

Kiley McKinna, 402.350.3447  
mcmarketingsales@aol.com

## Every female in this sale ~

- Davis Ranches retains 1 embryo flush (guarantee of 6 embryos) on every female in the sale at our expense and buyer's convenience.
- All heifers are halter-broke.

## Sight Unseen Purchases ~

If you are interested in any of the lots, but unable to view the sale cattle prior to the sale, please contact anyone involved in the sale. This allows us time to discuss your needs and suggest lots that fit your criteria. Your order will be held in the strictest confidence and handed with integrity and professionalism. Your satisfaction is 100% guaranteed if you have talked to one of our Davis Ranches team members prior to the sale.

## Photography & Videography ~

Katie Edwards, 817.901.7302  
ktjohnson03@me.com



ELCX

kin



 showchampions

NXM 2102783 ~ ELCX 559D ~ 02.12.2016 ~ 81% Limousin

**S: MAGS XYLOID**

DHVO DEUCE 132R  
BOHI RHONDA 314R

GPFF BLAQUE RULON  
AMY JO DHAN 20L  
EXLR NEW GENERATION 071M  
DAVIS ROSETTA 9514

**D: WLR PRADA**

MAGSWL USUAL SUSPECT 538U  
AUTO REBECA 292S

MAGS SASQUATCH  
MAGS PHANTOMS PRIZE  
LESF ASPHALT 9N  
EXLR REBECA 1019P

# Mags landing

599D

CED	BW	WW	YW	MK	CEM	SC	DOC	YG	CW	REA	MB	\$MTI
9	2.1	62	93	22	5	0.60	13	-0.31	15	0.67	-0.08	48.33

OWNED WITH EDWARDS LAND & CATTLE CO. & WIES LIMOUSIN



# 1

## DL HEAVEN CAN WAIT 550H

62% Lim-Flex Heifer ~ Homozygous Polled ~ Double Black  
LFF 2324328 ~ AADC 550H ~ 06.18.2020

**S: ELCX KINGS LANDING 599 D ET**  
MAGS XYLOID  
WLR PRADA

DHVO DEUCE 132R  
BOHI RHONDA 314R  
MAGSWL USUAL SUSPECT 538U  
AUGT REBECA 292S

**D: WLR WVR EMBRACE ET**  
EXAR BLUE CHIP 1877B  
WLR UGLY BETTY 432U

DAMERON FIRST CLASS  
GREENS PRINCESS 1012  
MAGS SHYLLO  
JCL HEIDI 2S

This is one of the most stylish females we've ever laid eyes on. DL Heaven Can Wait 550H is sleek fronted, extended through her neck and shoulder junction, huge middled and contemporary in her overall design. She is a 62% Lim-Flex daughter of ELCX Kings Landing 599D ET, the phenomenal son of MAGS Xyloid and WLR Prada- a mating that continues to prove itself to be one of the greatest in Limousin history. This female's dam is WLR WVR Embrace ET, an EXAR Blue Chip 1877B daughter from the famed WLR Ugly Betty 432U female. A pedigree doesn't get more storied or prolific than this one. DL Heaven Can Wait 550H is smooth in her lines, feminine in her build and sophisticated when she gets out and goes. A female that will build a true legacy of her own and follow closely in the footsteps of the phenomenal individuals who compile her lineage.

CED	BW	WW	YW	MK	CEM	SC	DOC	YG	CW	REA	MB	\$MTI
8	1.7	65	98	18	5	0.62	11	-0.16	24	0.52	0.15	56.45





# 2

## DL HIGH PROFILE 548H

78% Limousin Heifer ~ Double Polled ~ Double Black  
NXF 2326594 ~ AADC 548H ~ 06.13.2020

**S: ELCX KINGS LANDING 599 D ET**  
MAGS XYLOID  
WLR PRADA

**D: DL X-TRA FANTASTIC 576X**  
SCHILLING'S SENOR  
EXLR LEXI 7370L

DHVO DEUCE 132R  
BOHI RHONDA 314R  
MAGSWL USUAL SUSPECT 538U  
AUGT REBECA 292S  
KRVN NASKAR 013N  
FBF MY GIRL 629M  
EXLR LIMITED EDITION 765J  
EXLR 350J

Female's with this amount of power, substance of bone and flare aren't made every day. DL High Profile 548H is a striking daughter of ELCX Kings Landing 599D. Her dam is DL X-tra Fantastic 576X, a Schilling's Senor x EXLR Lexi 7307L female who has been a solid producer for us year after year. Schilling's Senor was a many-time champion bull for Schilling Limousin and son of KRVN Naskar 013N. This female is graceful in her movement, dead-level in her spine, genuine in her build and correct all the way around. The essence of pure elegance, flawless structure and feminine design, especially through her front one third. She is the reason we continue to use genetics that are withstanding the major test of time.

CED	BW	WW	YW	MK	CEM	SC	DOC	YG	CW	REA	MB	\$MTI
11	0.7	54	79	19	6	0.60	11	-0.37	11	0.78	-0.09	45.91



# 3

## DL HOITY TOITY 546H

65% Lim-Flex Heifer ~ Double Polled ~ Homozygous Black  
LFF 2326593 ~ AADC 546H ~ 06.06.2020

<b>S: ELCX KINGS LANDING 599 D ET</b>	MAGS XYLOID	DHVO DEUCE 132R
	WLR PRADA	BOHI RHONDA 314R
<b>D: KRVN TRACE 132T</b>	RITO 112 OF 2536 ROTP 616	MAGSWL USUAL SUSPECT 538U
	KRVN RECIP 267R	AUGT REBECA 292S
		RITO 616 OF 4B20 6807
		G A R PRECISION 2536
		GPFF BLAQUE RULON
		EF MYSTICAL 155M

Tremendous quality female with such cow power and massive overall dimension. DL Hoity Toity 546H is robust through her center body, unbelievably strong in her top and just flat good from all angles. They don't make 'em like this anymore, folks. This ELCX Kings Landing 599D ET daughter is out of a female that goes back to two highly influential sires in the both the Limousin and Angus breeds, GPFF Blaque Rulon and GAR Precision 2536. A huge bellied, expressively muscled female with such a captivating design and overall presence. She is fault-free on the move, flexible in her pasterns and strides with incredible confidence and poise. She will be a powerful mainstay in any program with a background and design like this. A true standout donor prospect if you ask us!

CED	BW	WW	YW	MK	CEM	SC	DOC	YG	CW	REA	MB	\$MTI
9	2.0	65	99	18	5	0.61	12	-0.26	16	0.57	0.05	53.62



# 4

## DL HOT TOPIC 544H

78% Limousin Heifer ~ Homozygous Polled ~ Black  
NXF 2326592 ~ AADC 544H ~ 06.03.2020

**S: ELCX KINGS LANDING 599 D ET**  
MAGS XYLOID  
WLR PRADA

**D: DL WONDERS YOO-HOO 42Y**  
SCHILLING'S SENOR  
EXLR WONDER 066M

DHVO DEUCE 132R  
BOHI RHONDA 314R  
MAGSWL USUAL SUSPECT 538U  
AUGT REBECA 292S

KRVN NASKAR 013N  
FBF MY GIRL 629M  
AUTO BLACK DAKOTA 129J  
EXLR LUVLY 084F

DL Hot Topic 544H has the shape, flawless lines and angularity to hang with the absolute best of 'em and hit it completely out of the park every single time! An ELCX Kings Landing 599D ET daughter that comes from a Schilling's Senor x EXLR Wonder 066M female, DL Wonders Yoo-Hoo 42Y. EXLR Wonder 066M was a direct daughter of the great AUTO Black Dakota 129J and EXLR Luvly 084F. These are genetics that have truly withstood the test of time and are still prominent in our program today. Hot Topic has been a favorite of ours from the start with her extra-special design, immaculate structure and overall balance. She's extremely attractive on the profile and even more so in motion. Equipped with an excellent set of running gears and flexibility off both ends of her skeleton. History is waiting to be written with this praiseworthy female.

CED	BW	WW	YW	MK	CEM	SC	DOC	YG	CW	REA	MB	\$MTI
10	1.3	58	88	20	6	0.54	10	-0.32	15	0.70	-0.04	48.76



# 5

## DL HIGH HOPES 538H

62% Lim-Flex Heifer ~ Homozygous Polled ~ Homozygous Black  
LFF 2324327 ~ AADC 538H ~ 05.26.2020

<b>S: ELCX KINGS LANDING 599 D ET</b>	MAGS XYLOID	DHVO DEUCE 132R
	WLR PRADA	BOHI RHONDA 314R
<b>D: WLR WVR EBONI ET</b>	EXAR BLUE CHIP 1877B	MAGSWL USUAL SUSPECT 538U
	WLR UGLY BETTY 432U	AUGT REBECA 292S
		DAMERON FIRST CLASS
		GREENS PRINCESS 1012
		MAGS SHYLLO
		JCL HEIDI 2S

Big swooping belly for days right here, folks. DL High Hopes 538H is a superb female we love for her structural foundation, 'sure-to-be-noticed' look and striking pedigree. She's an extraordinary female with such an impressive build and superior look. You won't find a female better structured, soft made or this stout featured just anywhere. She is a daughter of the impressive ELCX Kings Landing 599D ET and WLR WVR Eboni ET, an EXAR Blue Chip 1877B x WLR Ugly Betty 423U daughter. The pedigree and futuristic design this female offers is more than exciting. We know you'll be hearing more about this female in the future! This double homozygous female is 62% Lim-Flex.

CED	BW	WW	YW	MK	CEM	SC	DOC	YG	CW	REA	MB	\$MTI
7	2.1	66	100	18	5	0.62	11	-0.16	24	0.52	0.15	56.75





# 6

## DL HELLO DOLLY 536H

90% Limousin Heifer ~ Double Polled ~ Homozygous Black  
NPF 2326591 ~ AADC 536H ~ 05.14.2020

<b>S: ELCX KINGS LANDING 599 D ET</b>	MAGS XYLOID	DHVO DEUCE 132R
	WLR PRADA	BOHI RHONDA 314R
<b>D: MAGS XRAY</b>		MAGSWL USUAL SUSPECT 538U
		AUGT REBECA 292S
	DHVO DEUCE 132R	GPPF BLAQUE RULON
	MAGS RAMADA	AMY JO DHAN 20L
		TNUH BLUE PRINT 245H
		MAGS MANDA

DL Hello Dolly 536H is such a sleek made female with added style, tremendous length of body and a phenomenal presence. This ELCX Kings Landing 599D ET daughter is from MAGS Xray, a DHVO Deuce female from the influential MAGS Ramada donor. She has a world of future and offers an elite, high-caliber look from every angle, but especially on the profile. She's feminine, sound structured and beautifully designed with one heck of a flashy profile that will stick in your mind forever. DL Hello Dolly 536H can fly solo in any program and headline whatever scenario you choose for her. She is a homozygous black, double polled purebred that is about to set the world on fire!

CED	BW	WW	YW	MK	CEM	SC	DOC	YG	CW	REA	MB	\$MTI
9	2.6	70	100	22	5	0.85	10	-0.43	19	1.05	-0.13	49.93



# 7

## DL HEARTBREAKER 512H ET

65% Lim-Flex Heifer ~ Homozygous Polled ~ Homozygous Black  
LFF 2277800 ~ AADC 512H ~ 04.23.2020

**S: ELCX KINGS LANDING 599 D ET**  
MAGS XYLOID  
WLR PRADA

DHVO DEUCE 132R  
BOHI RHONDA 314R  
MAGSWL USUAL SUSPECT 538U  
AUGT REBECA 292S

**D: PBRS AUDREY 346A**  
MAGS YIP  
BUFORD ERICA 9312

MAGS THE GENERAL  
AUTO CARMINDA 656S  
J BAR 7 ALLIANCE 6869  
LCC ERICA LG008

Arguably one of the best females to ever come from our program. This double homozygous female is ultra-complete and it's a total understatement when we say she's wicked good. DL Heartbreaker 512H is flawless in her lines, bold through her center body, soft structured and incredibly correct in her angles. This gal is sheer power to the max- she's loaded with overall dimension, expressive muscle shape and such a killer presence. On the move she handles herself elegantly with a huge, confident stride and maximum skeletal flexibility. This daughter of ELCX Kings Landing 599D ET is a 65% Lim-Flex from a tremendous female, PBRS Audrey 346A, a leading donor for Edwards Land & Cattle Co. and Davis. She is a daughter of MAGS Yip and Buford Erica 9312. With a killer look like this 'heartbreaker' has, she'll take you straight to the backdrop every time and immediately to the top of any donor lineup when she goes into production. She's the silhouette of a female etched flawlessly in the minds of every progressive cattleman, judge or graphic designer who all dream of having a female like her in their program, sweep a whole show or spotlight an entire marketing creative.

CED	BW	WW	YW	MK	CEM	SC	DOC	YG	CW	REA	MB	\$MTI
11	0.2	55	87	18	6	-	13	-0.15	20	0.34	0.08	50.79



  
showchampions

# 8

## THREE EMBRYOS

Selling one package of three conventional embryos.  
78% Limousin ~ Double Polled ~ Double Black

<b>S: ELCX KINGS LANDING 599 D ET</b>	MAGS XYLOID	DHVO DEUCE 132R
	WLR PRADA	BOHI RHONDA 314R
<b>D: CFLX ROBIN 250Z</b>		MAGSWL USUAL SUSPECT 538U
		AUGT REBECA 292S
	AUTO BLACK DAKOTA 129J	EXLR DAKOTA 353G
	BOHI RED ROBIN 282R	DFLC JET SET BPC 34Y
		CONNELY LEAD ON
		MAGS MANUELA

It's an understatement to say that these embryos are destined for greatness. ELCX Kings Landing 599D and CFLX Robin 250Z have both produced mightily and are known for generating some of the most successful individuals in the Limousin breed. ELCX Kings Landing is a son of the proven MAGS Xyloid and the stunning WLR Prada female. CFLX Robin 250Z is the famed daughter of BOHI Red Robin 292R, the breed's very first National Champion Lim-Flex female. Her sire is the unforgettable AUTO Black Dakota 129J who is at the core of countless elite pedigrees still today. She is a full sister to the remarkable MAGS Xesturgy 0162 donor. Phenotypically we project these individuals to be some of the most impressive calves of their time. This is an offering of extreme reputation and genetic excellence that you won't want to miss! These three conventional embryos will be 78% Limousin and double polled and double black.



MAGS Xesturgy, a full sib to CFLX Robin 250Z, the dam of Lot 8 embryos.

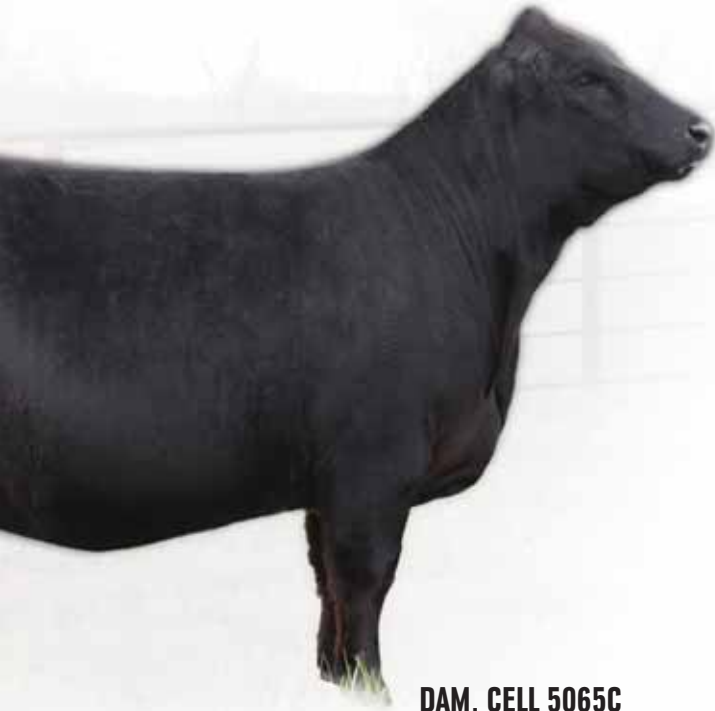


  
showchampions

# 9

## THREE IVF SEXED HEIFER EMBRYOS

Selling one package of three IVF SEXED Heifer embryos.  
90.5% Limousin ~ Double Polled ~ Double Black



**DAM, CELL 5065C**

**S: ELCX KINGS LANDING 599 D ET**  
MAGS XYLOID  
WLR PRADA

**D: CELL 5065C ET**

DHVO DEUCE 132R  
MAGS WRIGLEY

DHVO DEUCE 132R  
BOHI RHONDA 314R  
MAGSWL USUAL SUSPECT 538U  
AUGT REBECA 292S  
GPFF BLAQUE RULON  
AMY JO DHAN 20L  
MAGS SASQUATCH  
BOHI REJOICE 308R

We believe some of ELCX Kings Landing's best accomplishments thus far are with his current progeny on the ground. If you are looking to boost your embryo fire power, this will be a tremendous set of embryos to add to the tank. These three IVF Sexed Heifer embryos are from the powerful Davis donor, CELL 5065C. She is a daughter of the national champion DHVO Deuce and from the national champion female, MAGS Wrigley. A mating of this caliber doesn't become available very often. These heifers will be big footed, sound structured cattle with a world of body mass and dimension. This may be one of the winningest pedigrees in this lineup and it's just the surface of a highly anticipated future. The embryos will be 90.5% Limousin and double polled and double black.



  
showchampions



# 10

## THREE IVF SEXED HEIFER EMBRYOS

Selling one package of three IVF SEXED Heifer embryos.  
78% Limousin ~ Double Polled ~ Homozygous Black



**DAM, SSTO ROUND ROBIN 3805A**

**S: ELCX KINGS LANDING 599 D ET**  
MAGS XYLOID  
WLR PRADA

**D: SSTO ROUND ROBIN 3805A**  
GPFF BLAQUE RULON  
BOHI RED ROBIN 282R

DHVO DEUCE 132R  
BOHI RHONDA 314R  
MAGSWL USUAL SUSPECT 538U  
AUGT REBECA 292S

BLACK DIAMOND  
QUAIL RUN RAMONA BP  
CONNEALY LEAD ON  
MAGS MANUELA

Without question this is one of the most powerful offerings in this entire offering that will produce three IVF Sexed Heifer embryos from an unbelievable combination. ELCX Kings Landing 599D will forever be one of the best bulls we've exploited in our program. To say we are thrilled with the outcome of his progeny is putting it lightly. The dam in this mating is the one and only SSTO Round Robin 3805A. She is a maternal sister to MAGS Wazowski, MAGS Ur A Robin and the highly coveted CFLX Robin 251Z. This female's dam, BOHI Red Robin 282R is responsible for producing some of the breed's most remarkable individuals. There is so much consistency in this highly sought after mating it's almost overwhelming. We are confident that these future calves will be campaigned as successfully as any in the purebred Limousin ranks. These embryos will be homozygous black, double polled and 78% Limousin.



  
showchampions

# 11

## THREE IVF SEXED HEIFER EMBRYOS

Selling one package of three IVF SEXED Heifer embryos.  
84% Limousin ~ Homozygous Polled ~ Homozygous Black



**DAM, DL VASHTI 66Y**

**S: ELCX KINGS LANDING 599 D ET**  
MAGS XYLOID  
WLR PRADA

**D: DL VASHTI 66Y**

GPFF BLAQUE RULON  
KRVN SAGEBRUSH 001S

DHVO DEUCE 132R  
BOHI RHONDA 314R  
MAGSWL USUAL SUSPECT 538U  
AUGT REBECA 292S

BLACK DIAMOND  
QUAIL RUN RAMONA BP  
KRVN PICANTE 036P  
KRVN NEW ANGLE 360N

It goes without saying, we are incredibly proud to offer this high caliber mating of ELCX Kings Landing 599D to our very own DL Vashti 66Y. The potency of ELCX Kings Landing's influence combined with the remarkable power of DL Vashti 66Y will be ever-consistent. DL Vashti 66Y is a female that we're tremendously proud of here at the farm. She is one of the most sensational females we've raised that continues to set herself apart from the rest with each passing year. Vashti has produced some elite individuals that have been complete standouts in several of our female sales. It is an honor to bring such quality, proven genetics to the table year after year, but especially with an individual like DL Vashti 66Y. These three IVF Sexed Heifer embryos will be double homozygous and 84% Limousin.

**DAVIS RANCHES  
LIMOUSIN &  
LIM-FLEX**

# junior incent

## **LEVEL I**

National Junior Show

Grand Champion	\$2,500
Reserve Grand	\$1,750
Division Grand	\$1,000
Division Reserve	\$ 500
Class Winner	\$ 250

## **LEVEL II**

Nationally Sanctioned Regional Heifer Shows

Grand Champion	\$1,000
Reserve Grand	\$ 750
Division Champion	\$ 500
Division Reserve	\$ 250

## **LEVEL III**

State Fair 4-H & FFA Junior Shows

Grand Champion	\$ 500
Reserve Grand	\$ 300
Division Champion	\$ 150
Division Reserve	\$ 100

## **LEVEL IV**

State Junior Field Day & County Junior Shows

Grand Champion	\$ 500
Reserve Grand	\$ 250

# ive PLATFORM

## SCHILLING GAME OVER

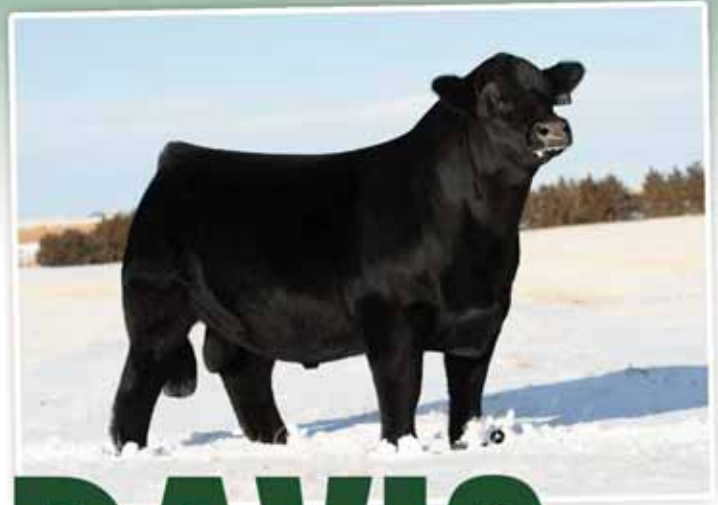
2021 Cattlemen's Congress  
Reserve Grand Champion Limousin Bull

Schilling R&L Classified X Schilling Beautician  
(*DHVO Deuce X CRSL Roxie 5050R*)

LFM2170433 - DOB 4/3/2019 - 50% Lim-Flex

Owned by Davis Ranches and Schilling Limousin

Semen Available through  
Grassroots Genetics and SEK Genetics



# DAVIS

Ranches

~ Davis Ranches congratulates Brandy King and Stewart Family Limousin for Champion Division IV at the 2021 Cattlemen's Congress Open Limousin Show

~ Congratulations to Tanner Brown in showing DL Giovanna 404G to win the Reserve Division III Champion Female at the 2021 Cowgirls in Cowtown Limousin & Lim-Flex show. She is a daughter of RLBH Air Force One and from WVR Emma and was bred in the White Valley Ranch and the Davis Ranches program, Brownwood, TX.



~ Congratulations to Sarah Sullivan, Dunlap, IA for showing DL Hush Money. She was named Division Champion at the 2021 Cattlemen's Congress Open Limousin Show. She is a daughter of ELCX Kings Landing.