



SATURDAY, OCTOBER 4, 2025 . 6 PM CST

Hankins Farms sale facility in Republic, Missouri



BRUCE & JANNA BRADLEY



JASON, PAM, EMMA & JESSI HANKINS

TABLE OF CONTENTS

CHAROLAIS OPEN FEMALES LOTS 1-3

CHAROLAIS COMPOSITE OPEN FEMALE LOT 4

CHAROLAIS SPRING BRED FEMALES LOTS 5-15

CHAROLAIS FALL BRED FEMALES LOTS 16-17

RED ANGUS OPEN FEMALES LOTS 18-20

RED ANGUS SPRING BRED FEMALES LOTS 21-32

RED ANGUS FALL BRED FEMALES LOTS 33-36

SIMMENTAL OPEN FEMALES LOT 37 & 38

SIMMENTAL SPRING BRED FEMALES LOTS 39-46

SIMMENTAL FALL BRED FEMALE LOT 47

Juniors
SAVE THESE DATES

CHAROLAIS JUNIOR NATIONALS - HUTCHISON, KS

JUNE 20-27, 2026

NAJRAE FUZION - WOODWARD, OK

JUNE 21-27, 2026

RED ANGUS YOUTH EXPO - MADISON, WI

JUNE 21-26, 2026

AJSA CLASSIC - GRAND ISLAND, NE

JULY 4-10, 2026

SALE INFORMATION

LOCATION

HANKINS FARMS SALE FACILITY

13123 West State Hwy TT • Republic, Mo

SALE DAY CONTACTS

Bruce Bradley, 417.848.3457

Jason Hankins, 417.861.2316

SALE MANAGEMENT

Graham Blagg, 530.913.6418

Tim Anderson, 605.682.9343

Jered Shipman, 806.983.7226

InnovationAgMarketing.com

AUCTIONEER

Cody Lowderman, 309.313.2171

RING SERVICE

Hadley Schotte, American International Charolais Assoc., 785.562.6632

Scott Manley, Special Assignment, 417.860.5250

Chisolm Kinder, Special Assignment, 405.747.4683

SALE CONSULTANTS

David Hobbs, 913.515.1215

Matt Crutcher, 417.766.3278

Wes Chism, 281.761.5952

Jeannine Doughty, 816.616.8838

Kiley McKinna, 402.350.3447

LODGING

Double Tree by Hilton, 417.831.3131

Spring Hill Suites by Marriott, 417.351.6981

Drury Inn and Suites, 417.863.8400

TERMS & CONDITIONS

The terms of the sale are cash or good check payable immediately upon the conclusion of the sale before animals will be removed. Cattle sell under the standard terms of their respective breed association. All sales are final, and the cattle will become the property of the buyer when the auctioneer says "SOLD".

SUPPLEMENTAL INFORMATION

A detailed supplement sheet will be available the week of the sale with updated breeding status. All announcements from the auction block will take precedence over printed materials.

HEALTH

All cattle will sell with proper health certificates for in-state and out-of-state shipment.

INSURANCE

James Bessler, 815.762.2641



Welcome

TO THE FALL COLORS SALE

Bradley Cattle and Hankins Farms are excited to welcome everyone to our 5th Annual "Fall Colors" Sale. We believe that over the past 5 years our steadfast partnership has led to ever improving genetics through the use of ET, AI, and quality herd sires. This has resulted in us being able to offer for your evaluation a superior set of Charolais, Red Angus, and Simmental females.

This year has become a year of reflection. The cattle industry recently said good-bye to a true industry leader and visionary. This year, we would like to pay tribute to Troy Thomas (1962-2025). Troy left behind an immense footprint not only with his cattle operation but across the entire cattle industry. Several years ago, we were honored to have the opportunity to purchase both a herd of Charolais and Red Angus cows from the Thomas family. Many of those cows are still in active production on our farms today. Over the years, we have been privileged to partner alongside Troy and Thomas Ranch on several influential genetics and seedstock cattle in both the Charolais and Red Angus breeds. Amongst these include Red Angus bulls TR Rojas Chivas 17109 and Damar Trump C512, as well as Charolais bulls TR Legacy 1707J and most recently Shrader's Guardian 477M ET. In addition, the well-known Charolais donor dam, TR Ms Kay 30A ET. Troy was not only a partner in many ways with Bradley Cattle and Hankins Farms, but also a true friend. His support, guidance, and friendship were second to none, and he will truly be missed. We were honored to have had Troy and his wife, VeaBea, make the trip and attend a few of our "Fall Colors" sales. Thomas Ranch genetics have always been and will continue to be deeply ingrained in the cattle at Hankins Farms and Bradley Cattle. VeaBea and Cally, our thoughts and prayers continue to be with you and the entire Thomas Ranch family. We look forward to our continued partnership and are here to support you in any way needed.

We look forward all year to hosting "The Fall Colors" and we hope you can join us on October 4, 2025. As always, our crew will feed everyone at 5 PM, and the sale starts at 6 PM. Come early and plan to stay late. A good time is always had by all. If you are unable to attend our sale in person, you will be missed. However, the sale will be broadcast on CCI.live with real-time bidding available. Don't hesitate to reach out to Jason, Bruce, or any of the amazing Innovation AgMarketing team with questions or to plan a time to come evaluate our offering!



BRUCE & JANNA BRADLEY
MARSHFIELD, MISSOURI

Bruce, 417.848.3457

brucebradleycattle@gmail.com

Bob Stewart, Ranch Manager



JASON, PAM, EMMA & JESSI HANKINS
SPRINGFIELD, MISSOURI

Jason, 417.861.2316

hankinsfarms1017@gmail.com



Thank You

FOR YOUR INTEREST

The 2025 edition of “The Fall Colors” Production Sale showcases an outstanding group of leading ladies, brought to you once again by the Bradley and Hankins families of Southwest Missouri. We believe, as we’re confident you will too, that this year’s offering features the very best these two operations have ever assembled for public appraisal. True to tradition, the sale will feature two of the most influential breeds in the Fescue Belt—Red Angus and Charolais—while also including a very impressive set of Simmental & Percentage Simmental females that have been built with profitability in mind. This diverse offering creates opportunities for both progressive commercial cattlemen and seedstock producers to acquire genetics from some of the strongest cow families in the country.

The commitment and tireless work ethic of both families is evident in every page of this catalog. Their success is built on hustle—not just as an action, but as a way of life, a passion, and a driving force. Bruce Bradley has long been a champion for both the seedstock business and the commercial cow-calf producer, consistently working with Jason to provide affordable, functional herd sires that build lasting customer relationships and strong demand. Beyond their own program, the duo actively supports multiple production sales across the country, and in turn allows them to be able to offer stock from some of the very best pedigrees in this elite female offering. Their efforts in procurement, marketing, and customer service have earned them widespread respect throughout the industry.

Constant reminders of how this business is built upon relationships and good people can be found, and it comes without saying that conducting business with both the Bradley and Hankins families is a way to align your program with some of the best you will find in the land. These families have invested heavily in both land and livestock, and now present to you a lineup that is truly second to none. On October 4, 2025, we invite you to make an investment of your own—an investment in proven genetics designed to thrive in this region and well beyond.

We sincerely hope you’ll make plans to join us for this annual event. Should you need any assistance with selections or information prior to sale day, please don’t hesitate to reach out to any member of “The Fall Colors” team or Innovation AgMarketing. Your interest is greatly appreciated, and we’re confident you’ll be impressed with the quality on offer.



Graham Blagg · Erin Anderson · Jered Shipman

THE HERD BULLS OF FALL COLORS

TR LEGACY 1707 ET



OWNED BY
BRADLEY CATTLE
ACES WILD RANCH
THOMAS RANCH

J6 BULLETPROOF 542K

OWNED BY
BRADLEY CATTLE
HANKINS FARMS
TWIN WILLOW FARMS



WB THE GOV 316L ET

OWNED BY
BRADLEY CATTLE
HANKINS FARMS
ACES WILD RANCH
WAGNER BAUMAN, LLC





1

BC/HF MISS MEGATRON 545

AICA F1369973 • TATTOO 545 • DOB 2/23/25 • PA FREE

WC MEGATRON 3341 P**C&S MS DEENA 636**WC INFERNO 6561 P
WC BRENDA 9336 P
WR WRANGLER W601
CS MS TURTON 262

| CED | BW | WW | YW | MILK | REA | MARB | TSI |
|------|------|----|-----|------|------|------|--------|
| 13.1 | -1.4 | 77 | 126 | 31 | 0.91 | 0.25 | 290.49 |

**WC MEGATRON 3341 P**
SIRE OF LOT 1

BC/HF Miss Megatron 545 is the kind of female we base our breeding program around generating. Seldom will you find females that bring outlier phenotype, genuine muscle shape, foot quality, masculinity, and impeccable structural integrity together with an EPD package that rivals the best in the business. You can check into every angle of evaluation here and find what you are looking for, she has the look and build of a female that will run on the front end in the showing, yet what may only trump her phenotypic quality is the way she reads on paper. With top third of the breed CE, that then flips to top 10% WW and top 25% YW, along with top 15% Milk, top 6% MTL, top 15% Marb and TSI, and top 20% CW and REA. This dynamic breeding piece offers a versatility that makes her a perfect candidate for programs with a wide range of breeding goals.

**BC MR CARBON COPY 312**
MATERNAL BROTHER TO LOT 1

2

BC/HF MISS IMPRESSIVE 572

AICA F1369971 • TATTOO 572 • DOB 1/1/25 • PA FREE

WDZ ICON 2048

WR ICON G687

WDZ MS AFFINITY 9203

RBM IMPRESSIVE L125

RBM KEYSTONE H41

RBM IMPRESSIVE G149

| CED | BW | WW | YW | MILK | REA | MARB | TSI |
|------|------|----|-----|------|------|------|--------|
| 14.7 | -2.4 | 63 | 126 | 25 | 0.75 | 0.40 | 283.08 |

In the summer of 2024, we were given the opportunity to purchase the entire Charolais bred heifer crop at RBM Livestock, of Florence, South Dakota. The Bergh family has built an incredible cowherd and reputation on the Northern Plains, and we couldn't be more excited to build some new cow families from the strong foundation this opportunity will provide. BC/HF Miss Impressive 572 is a daughter of one these females, this WDZ Icon 2048 daughter is extra complete and fault free in her design, she motors with comfort and ease, and is extra bold and maternal in her body cavity.



LOT 2 BC/HF MISS IMPRESSIVE 572

3

BC/HF MISS LAYLA 573

AICA F1369972 • TATTOO 573 • DOB 1/2/25

WDZ ICON 2048

WR ICON G687

WDZ MS AFFINITY 9203

RBM IMPRESSIVE L92

RBM KEYSTONE H41

RBM IMPRESSIVE J11

| CED | BW | WW | YW | MILK | REA | MARB | TSI |
|------|------|----|-----|------|------|------|--------|
| 16.5 | -3.9 | 63 | 123 | 25 | 0.73 | 0.38 | 277.15 |

Another resulting female from the impressive group of bred females we acquired from RBM Livestock. These daughters of WDZ Icon 2048 are the right kind to build a program around, as not only are they super maternal and easy keeping in their kind, but they are supported by the science on the paper too, with an awesome set of profitability expectations. Most impressively you will find her ranking top 9% for CE and top 3% for Marb.



LOT 3 BC/HF MISS LAYLA 573

4

HF MISS CHARLIE 516

AICA RF717719 • TATTOO 516 • DOB 2/5/25 • COMPOSITE

M&M OUTSIDER 4003 PLD

LT LONG DISTANCE 9001 PLD

M&M MS CARBINE 1567 PLD

ADPR53G

MAN AMONG BOYS

ANGUS

This Composite Charolais show heifer prospect is a unique creature that is bound to make for a fun ride this coming show season for a junior. HF Miss Charlie 516 ties together lots of neat pieces, being so rugged up high, carries herself with unwavering flexibility at the ground, and poses with a feminine look and presence.



LOT 4 HF MISS CHARLIE 516



LOT 5

Leading off the bred female division are five daughters of the National Champion, TR Legacy 1707J ET. The TR Legacy 1707J influence is becoming prolific throughout the Charolais cowherd, and the set of daughters that we will build from have us excited about the future as they are the practical, and profitable kind, and only further impress with every stage of maturity. Here you will notice the maternal influence of a RBM TR Rhinestone Z38 daughter, and then multiple females deeper into her pedigree with flawless production records. You can trust that there are generations of cow power built in here!



TR LEGACY 1707J ET
SIRE OF LOT 5-9

5

BC MISS LEGACY 417

AICA F1362761 • TATTOO 417 • DOB 2/20/24 • PA FREE

TR LEGACY 1707J ET**C&S MS DARLENE 631**

TR CAG CARBON COPY 7630E ET
TR MS KAY 30A ET
RBM TR RHINESTONE Z38
C&S MS ANNIE MO 1628

| CED | BW | WW | YW | MILK | REA | MARB | TSI |
|------|------|----|----|------|------|------|--------|
| 11.8 | -1.8 | 54 | 96 | 25 | 0.69 | 0.21 | 249.05 |

AI 4/10/25 TO LT ATLAS 0251 PLD (AICA# M943509)

PE 4/18/2025 - 8/15/2025 TO TR FOREIGNER 3726L ET (AICA# EM989433)
EST. DUE 3/7/26

6

BC/HF MISS LEGACY 415

AICA F1354477 • TATTOO 415 • DOB 2/16/24 • PA FREE

TR LEGACY 1707J ET**TR MS DAKOTA BOB 1623J**

TR CAG CARBON COPY 7630E ET
TR MS KAY 30A ET
KC DAKOTA BOB 9074 P
TR MS WYLIES MONTE 8755F ET

| CED | BW | WW | YW | MILK | REA | MARB | TSI |
|------|------|----|----|------|------|------|--------|
| 14.2 | -3.5 | 55 | 93 | 24 | 0.62 | 0.22 | 250.07 |

PE 4/18/2025 - 8/15/2025 TO TR FOREIGNER 3726L ET (AICA# EM989433)
EST. DUE 3/10/26

LOT 6

BC/HF Miss Legacy 415 certainly comes with the backing of several of the most productive and dominating individuals in the breed. You will find her pedigree littered with a "who's who" list of the maternal legends, M&M Ms Carbine 1567 PLD, TR Ms Kay 30A ET, TR Ms Wyoming Wind 5604R and a full sister to the legendary TR Ms Montella 1572Y. If you're in the market for a cowherd building female that has the credentials to make for a profitable investment in the pasture, then look in here!



TR MS MONTELLA 1572Y
FULL SISTER TO THE MATERNAL GRANDDAM OF LOT 6

7

BC/HF MISS LEGACY 413

AICA F1354476 • TATTOO 413 • DOB 2/13/24 • PA FREE

TR LEGACY 1707J ET

TR CAG CARBON COPY 7630E ET

TR MS KAY 30A ET

C&S MS DOLLIE 667

TR MR RHINESTONE 4570B

C&S MS EMMA 323

| CED | BW | WW | YW | MILK | REA | MARB | TSI |
|------|------|----|-----|------|------|------|--------|
| 11.3 | -1.1 | 56 | 100 | 25 | 0.85 | 0.18 | 256.28 |

AI 4/11/25 TO LT ATLAS 0251 PLD (AICA# M943509)

PE 4/18/2025 - 8/15/2025 TO TR FOREIGNER 3726L ET (AICA# EM989433)
EST. DUE 2/8/26

BC/HF Miss Legacy 413 checks plenty of categories when it comes to being a long-term profit building matron. This PA Free, high performance, and high profitability female impresses on foot too, tying together cow power and balance. Note that when it comes to EPD's she sports the highest YW, REA and TSI of any of the TR Legacy 1707J daughters to sell.



TR FOREIGNER 3726L ET
SERVICE SIRE TO THE CHAROLAIS OFFERING

8

BC MISS LEGACY 421

AICA F1362785 • TATTOO 421 • DOB 2/27/24 • PA FREE

TR LEGACY 1707J ET

TR CAG CARBON COPY 7630E ET

TR MS KAY 30A ET

RKB SASHA

LT RUSHMORE 8060 PLD

BAR S MS JOAN 5907

| CED | BW | WW | YW | MILK | REA | MARB | TSI |
|------|------|----|----|------|------|------|--------|
| 13.3 | -1.8 | 60 | 98 | 26 | 0.74 | 0.13 | 251.65 |

AI 4/11/25 TO LT ATLAS 0251 PLD (AICA# M943509)

PE 4/18/2025 - 8/15/2025 TO TR FOREIGNER 3726L ET (AICA# EM989433)
EST. DUE 1/18/26 - SAFE AI

BC Miss Legacy 421 is a heavy structured, and extra burly daughter of the National Champion, TR Legacy 1707J ET, that stems back to a past show heifer for Rachel Booth. We strive to build our cowherd around females that are extra shapely in their body composition and extra sound at the ground, it's the way this female excels in those traits that promotes her to a leading option in the bred heifer division.



TR CAG MS HADLEE 0759H ET
DAM OF LOT 9

9

BC/HF MISS HALEE 440

AICA F1359100 • TATTOO 440 • DOB 5/5/24 • PA FREE

TR LEGACY 1707J ET

TR CAG CARBON COPY 7630E ET

TR MS KAY 30A ET

TR CAG MS HADLEE 0759H ET

TR CAG CARBON COPY 7630E ET

TR MS RANDI 0633X

| CED | BW | WW | YW | MILK | REA | MARB | TSI |
|------|------|----|----|------|------|------|--------|
| 11.4 | -1.7 | 56 | 94 | 24 | 0.59 | 0.18 | 247.31 |

AI 4/17/25 TO LT ATLAS 0251 PLD (AICA# M943509)

PE 4/18/2025 - 8/15/2025 TO TR FOREIGNER 3726L ET (AICA# EM989433)
EST. DUE 1/23/26 - SAFE AI

BC/HF Miss Halee 440 is an absolute stunner from the side profile! We love the added look and feature of this TR Legacy 1707J ET daughter. She comes from a lineage of phenotype driven stock. She goes back to another show heifer for Emma, TR CAG Ms Hadlee 0759H ET who was a full sister to the \$100,000 Embryos on Snow live lot, CAG TR Effective 0607H ET. A generation further back you find the \$100,000 TR Ms Randi 0633X! Needless to say, her pedigree aligns some of the best cows in the business.



BC/HF MISS GRACE 243
MATERNAL SISTER TO LOT 9



TR MS RANDI 0633X
LEGENDARY MATERNAL GRANDAM OF LOT 9



LOT 10 HF JACKIE 404

10

HF JACKIE 404

AICA EF1359101 • TATTOO 404 • DOB 1/20/24 • PA FREE

TR CAG CARBINE'S VISION 9700 ET

CIRCLE K JACKIE O

SHARODON DOUBLE VISION 1D
M&M MS CARBINE 1567 PLD
TR MR FIRE WATER 5792RET
CIRCLE K ANTOINETTE

| CED | BW | WW | YW | MILK | REA | MARB | TSI |
|------|------|----|----|------|------|------|--------|
| 10.5 | -2.0 | 56 | 92 | 17 | 0.66 | 0.05 | 239.70 |

AI 4/17/25 TO LT ATLAS 0251 PLD (AICA# M943509)

PE 4/18/2025 - 8/15/2025 TO TR FOREIGNER 3726L ET (AICA# EM989433)

EST. DUE 1/18/26 - SAFE AI

HF Jackie 404 is bred in the purple, stemming from our flagship, Circle K Jackie O female that has been both a champion in the ring and the pasture. She was the Grand Champion Charolais Female at the 2017 Missouri State Fair, as a cow-calf pair. Multiple maternal sisters to 404 have been successful projects for junior exhibitors across the country, including the Porter, Barnes, Moon and Fowler Families. Jackie O, is a full sister to Circle K Juliette that was the Grand Champion Charolais Female at the 2014 Houston Livestock Show & Rodeo for Bayne Smith.

11

BC MISS CARBON 2435

AICA F1362120 • TATTOO 2435 • DOB 3/18/24 • PA CARRIER

TR MR CARBON COPY 1713J ET

WR BRIDGET D645

TR CAG CARBON COPY 7630E ET
TR MS KAY 30A ET
WR BRIDGER Z620
WR DUKET W621

| CED | BW | WW | YW | MILK | REA | MARB | TSI |
|------|------|----|-----|------|------|------|--------|
| 10.0 | -1.3 | 61 | 106 | 20 | 0.57 | 0.03 | 235.06 |

AI 4/10/25 TO LT ATLAS 0251 PLD (AICA# M943509)

PE 4/18/2025 - 8/15/2025 TO TR FOREIGNER 3726L ET (AICA# EM989433)

This direct daughter of TR CAG Carbon Copy 7630E ET stems from a female that was a long term, high production female for the esteemed Wagonhammer Ranch of Nebraska. WR Bridget D645 religiously brought value added cattle to the weaning pen in Albion, including a daughter that was a feature of their 2022 Production Sale, and WR Kingsman G691 who was the heaviest natural born Charolais Bull in their 2020 Bull Sale, in which a 2/3 semen interest sold to Horn Land & Cattle Ltd. of Weatherford, Texas.

**CIRCLE K JACKIE O**
DAM OF LOT 10**CIRCLE K JULIETTE**
FULL SISTER TO DAM OF LOT 10**TR MR CARBON COPY 1700J**
FULL BROTHER TO THE SIRE OF LOT 11



LOT 12 HF JACKIE 404

12

BC MISS ATLAS 416

AICA F1362766 · TATTOO 416 · DOB 2/17/24-

LT ATLAS 0251 PLD

WC SWEETHEART 3505 P

LT PATRIOT 4004 PLD
 LT MOLLY 7031 PLD
 LT BLUE VALUE 7903 ET
 SC SWEETHEART S182 P

| CED | BW | WW | YW | MILK | REA | MARB | TSI |
|------|------|----|-----|------|------|------|--------|
| 16.4 | -4.4 | 65 | 113 | 27 | 0.82 | 0.23 | 275.32 |

AI 4/11/25 TO TR LEGACY 1707J ET (AICA# EM960037)
 PE 4/18/2025 - 8/15/2025 TO TR FOREIGNER 3726L ET (AICA# EM989433)
 EST. DUE 2/26/26

Those who have attended past editions of the “Fall Colors” will recognize the dam of BC Miss Atlas 416 as a very familiar face. Yet this fresh mating of LT Atlas 0251 PLD on the WC Sweetheart 3505 P donor female is proving to perhaps be her most potent. This daughter is a spitting image of her role model mother, she is a female that not only has the phenotype but also the genetic backing to generate at the highest level. She is the kind that will stand the test of time just like the illustrious list of females who have gone before her.



WC SWEETHEART 3505 P
 DAM OF LOT 12



BC/HF MISS VISION 261
 MATERNAL SISTER TO LOT 12

13

BC/HF MISS ATLAS 412

AICA F1354475 · TATTOO 412 · DOB 3/11/24 · PA FREE

LT ATLAS 0251 PLD

DC MS ON FIRE 20

LT PATRIOT 4004 PLD
 LT MOLLY 7031 PLD
 TR MR FIRE WATER 5792RET
 MCF MS DANDY R09 P

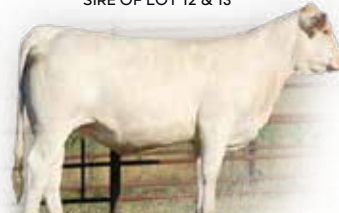
| CED | BW | WW | YW | MILK | REA | MARB | TSI |
|------|------|----|-----|------|------|------|--------|
| 12.6 | -2.8 | 59 | 107 | 28 | 1.00 | 0.02 | 277.46 |

AI 4/11/25 TO TR LEGACY 1707J ET (AICA# EM960037)
 PE 4/18/2025 - 8/15/2025 TO TR FOREIGNER 3726L ET (AICA# EM989433)
 EST. DUE 1/14/26 - SAFE AI

BC/HF Miss Atlas 412 is the functional type and kind. She has a set of feet and legs that will outlive any breeding tenure and is powered by the DC Ms On Fire 20 matron that has built an impressive breeding repertoire over her 9 calves to date. Built in longevity and maternal prowess comes standard issue here. Several maternal sisters to 412 have been highlights of our female offering, this is a lineage of stock that are consistently high quality.



LT ATLAS 0251 PLD
 SIRE OF LOT 12 & 13



BC MISS FIREPLAY 2102
 MATERNAL SISTER TO LOT 13

LOT 14

BC Miss Afinity 419 is a daughter of the widely popular maternal sire, LT Affinity 6221 PLD and is further supported by the influence of LT Patriot 4004 PLD, that stems back to the legendary 'Asta' cow family that has long served the Lindskov program. M006 is a beautiful profiling female that offers superior shape, depth of rib, and overall capacity. We love the skeletal quality that she possesses, while maintaining more than enough power and dimension.

LT AFFINITY 6221 PLD
SIRE OF LOT 14



14

BC MISS AFINITY 419

AICA F1362759 · TATTOO 419 · DOB 2/24/24 · PA FREE

LT AFFINITY 6221 PLD

LT RUSHMORE 8060 PLD

LT ATHENA 1247

PCC ASTA PATRIOT 2051 ET

LT PATRIOT 4004 PLD

LT ASTA 9050 PLD

| CED | BW | WW | YW | MILK | REA | MARB | TSI |
|------|------|----|-----|------|------|------|--------|
| 12.3 | -3.0 | 56 | 110 | 30 | 0.54 | 0.23 | 253.78 |

AI 4/10/25 TO LT ATLAS 0251 PLD (AICA# M943509)

PE 4/18/2025 - 8/15/2025 TO TR FOREIGNER 3726L ET (AICA# EM989433)
EST. DUE 2/20/26

15

BC MISS CAMELOT 2428

AICA F1362645 · TATTOO 2428 · DOB 2/3/24 · PA FREE

WC CAMELOT 1818 P ET

WINN MANS SKAGGS 663X

WC BRENDA 4035 P

WC DUCHESS 7007 P

LT BLUE VALUE 7903 ET

WC DUCHESS 5236 P

| CED | BW | WW | YW | MILK | REA | MARB | TSI |
|------|------|----|-----|------|------|------|--------|
| 13.6 | -2.7 | 71 | 122 | 34 | 0.76 | 0.16 | 277.02 |

AI 4/11/25 TO LT ATLAS 0251 PLD (AICA# M943509)

PE 4/18/2025 - 8/15/2025 TO TR FOREIGNER 3726L ET (AICA# EM989433)
EST. DUE 2/8/26

LOT 15

This lone daughter of WC Camelot 1818 P ET packs a punch, both from a muscle and substance standpoint, while maintaining an elite EPD profile. You'll find this cow prospect to be very bold and shapely in her body cavity, stout in her bone and foot size and high performing about her growth curve. Take note of her growth EPDs that lead the entire offering!

WC CAMELOT 1818 P ET
SIRE OF LOT 15





LOT 16 WIA MS SEPTEMBER 3207 P

16

WIA MS SEPTEMBER 3207 P

AICA F1347265 · TATTOO 3207 · DOB 9/17/23

VPI MONTICELLO 023H

FTJ MONTICELLO 1806

MEAD ACTRESS Q825

VPI CAMEO GIRL 726E
LT BLUE VALUE 7903 ET
MEAD ACTRESS L965

| CED | BW | WW | YW | MILK | REA | MARB | TSI |
|------|------|----|-----|------|------|------|--------|
| 11.4 | -1.1 | 61 | 108 | 22 | 0.50 | 0.28 | 262.93 |

LOT 16A | TAG N50 | DOB: 8/29/25 | 62 LB. BW
HEIFER CALF BY TR LEGACY 1707J ET (AICA# EM960037)

WIA Ms September 3207 P is certainly one that will be easy to find among the white hided, fall pair offering, as this beautiful profiling daughter of VPI Monticello 023H screams quality from one end of her skeleton to the other. She is a sleek designed female that is so robust in the shape of her forerib and center body. She is big footed, square built, and loaded with maternal excellence from end to end! Her mating with the National Champion, TR Legacy 1707J ET was a perfect match up in our mind and yielded a beautiful heifer calf that looks very promising already.

17

BC MISS VISION 2346

AICA F1362361 · TATTOO 2346 · DOB 9/1/23

TR CAG CARBINE'S VISION 9700 ET

SHARODON DOUBLE VISION 1D

WR DOS EQUIS F680

M&M MS CARBINE 1567 PLD
WR DOS EQUIS C848
WR BENNITA C604

| CED | BW | WW | YW | MILK | REA | MARB | TSI |
|------|------|----|-----|------|------|------|--------|
| 10.5 | -1.2 | 73 | 122 | 15 | 0.63 | 0.03 | 242.95 |

PE 11/21/24-2/26/25 TO TR LEGACY 1707J ET (AICA# EM960037)

Here is a big boned, stout made daughter of TR CAG Carbine's Vision 9700 ET that is long and level from hooks to pins, and offers a tremendous look of balance and symmetry from the side. She is a perfect balance of high performance with maternal excellence. Consistency is the key to success! Her chance to return on investment isn't far off either, and she comes bred up to the National Champion, TR Legacy 1707J ET and will most likely have a calf at side on sale day.

TR LEGACY 1707J ET
SERVICE SIRE TO THE CHAROLAIS OFFERINGTR CAG CARBINE'S VISION 9700 ET
SIRE OF LOT 17



18

1BBC HF MISS FANCY 2502

RAAA 5107473 • TATTOO 2502 • DOB 3/7/25 • 100% AR • A

TMAS MR TRUMP 889F ET**PBRS 7179**

DAMAR TRUMP C512
 PZC CARIBBEAN BREEZE 115 ET
 RED JOCK BOSTON GEORGE 3B
 CRSL FANCY

| PRO S | HB | GM | CED | BW | WW | YW | MILK |
|-------|----|----|-----|------|----|----|------|
| 73 | 37 | 36 | 13 | -0.6 | 61 | 94 | 23 |

1BBC HF Miss Fancy 2502 is one of the most unique featured, bold shaped, sound structured and powerful females we have been around, regardless of breed. This TMAS Mr Trump 889F ET daughter comes with a massive amount of dimension and shape, she is extra deep sided and bold in her body shape. We love her angular look from the side, and the eye appealing outline she is designed with. She has already made a couple of laps around the showring, being named the Calf Division Champion in the Junior Show and Reserve Division Calf Champion in the Open Show at the 2025 Missouri State Fair. This is just a taste of what we think she is capable of moving forward!

**TMAS MR TRUMP 889F ET**

SIRE OF LOT 18 & 19





LOT 19

1BBC HF Miss Dynamite 2501 stems from Red Angus Royalty. She is a great granddaughter of Red U2 MS Dynamo 382, a matron who has generated herd sires that walk the pastures of some of the most progressive seedstock operations in North America. TMAS Mr Trump 889F ET has built a reputation for consistently siring cattle with width, substance, and eye appeal. We love the daughters of 889F once they reach the production phase of their life. There is plenty of fun to be had before this female reaches production, as she is the type and kind to gather plenty of attention on the tanbark.



RED U2 MS DYNAMO 382W
MATERNAL GREAT GRANDDAM OF LOT 19

19

1BBC HF MISS DYNAMITE 2501

RAAA 5107183 • TATTOO 2501 • DOB 2/15/25 • 100% AR • A

TMAS MR TRUMP 889F ET

DAMAR TRUMP C512
PZC CARIBBEAN BREEZE 115 ET
SMOKY Y TRAVERSE 1455B
TR ROJAS DYNAMITE 6201

TMAS MS DYNAMITE 839F

| PRO S | HB | GM | CED | BW | WW | YW | MILK |
|-------|----|----|-----|------|----|----|------|
| 67 | 44 | 23 | 13 | -0.9 | 63 | 94 | 22 |

20

EDH MISS COPPER 475

RAAA 5061463 • TATTOO 475 • DOB 11/1/24 • 100% AR • A

1BBC RENEGADE 040

ROJAS TR CHIVAS 17109
TMAS MS LANA LYNN 627D
TWG TANGO 156D
SCHE COPPER CARD 629

TMAS MS COPPERS TANGO 949G

| PRO S | HB | GM | CED | BW | WW | YW | MILK |
|-------|----|----|-----|-----|----|-----|------|
| 61 | 36 | 24 | 11 | 0.1 | 65 | 102 | 23 |



LOT 20

This powerhouse is one that deserves appraisal on sale day, while she comes with all the extras in regard to density, she is very feminine about her front third, smooth in her shoulder design, and offers an ultra-maternal turn and shape to her center body. We love the balance and eye appeal that this female brings to the table. She is built just how we like them, rugged structured, sound footed and stylish, with an extra shot of muscle and width. She has the look of a powerful donor matron of the future!



1BBC RENEGADE 040
SIRE OF LOT 20



21

1BBC MISS CHIVAS 408

RAAA 4973797 • TATTOO 408 • DOB 2/24/24 • 100% AR • A

ROJAS TR CHIVAS 17109

BMRA MS WR TRUE 5005

PZC TMS FIRESTORM 1800 ET
 RED BAR-E-L KASSIE 117X
 BMRA MR BIG SKY 088
 WR MS SADIE 1125

| PRO S | HB | GM | CED | BW | WW | YW | MILK |
|-------|----|----|-----|------|----|----|------|
| 80 | 52 | 28 | 14 | -1.3 | 57 | 85 | 29 |

AI 5/20/25 TO J6 BULLETPROOF 542K (RAAA# 4635651)

PE 5/22/25-6/12/25 TO J6 BULLETPROOF 542K (RAAA# 4635651)

PE 7/1/25-8/1/25 TO ERKS JUMPSTART 4912 (RAAA# 4965660)

EST. DUE 3/29/26

A special breeding piece that offers quality well beyond what you will find in the flesh. 1BBC Miss Chivas 408 has donor cow potential written all over her, as she comes with both incredible quality of design, a powerful cow family in support, and a dynamic set of performance indicators. A full brother to this female, 1BBC Troy 129 was a feature of the 2022 Thomas Ranch Bull Sale, selling to Nichols Cattle Company of Indiana. Bold, massive ribbed, and smooth from end to end. She is ultra-feminine and attractive while offering superior maternal function. Backed by a mating that will serve as a building block for the future of any program!

**ROJAS TR CHIVAS 17109**

SIRE OF LOTS 21 & 22

**1BBC TROY 129**

FULL BROTHER TO LOT 21





RED RAINBOW COUNTESS 32X
MATERNAL GRANDDAM OF LOT 22 & 23

22

TMAS MS COUNTESS 424M

RAAA 4931282 • TATTOO 424 • DOB 4/20/24 • 100% AR • A

ROJAS TR CHIVAS 17109 PZC TMAS FIRESTORM 1800 ET
RED BAR-E-L KASSIE 117X
ERKS MULBERRY 9918
TMAS MS COUNTESS 1954J ET RED RAINBOW COUNTESS 32X

| PRO S | HB | GM | CED | BW | WW | YW | MILK |
|-------|----|----|-----|------|----|----|------|
| 90 | 58 | 31 | 14 | -2.6 | 62 | 99 | 30 |

PE 5/21/25-7/1/25 TO ERKS JUMPSTART 4912 (RAAA# 4965660)
EST. DUE 3/5/26

23

TMAS MS COUNTESS 405M

RAAA 4931254 • TATTOO 405 • DOB 4/11/24 • 100% AR • A

SCHULER MATCHMAKER 1974 WFL PROFITMAKER E7030
SOR SHASTALADY HORIZON 5381C
TMAS FUCHSIA COUNTESS 800 RED COCKBURN ASSASSIN 624D
RED RAINBOW COUNTESS 32X

| PRO S | HB | GM | CED | BW | WW | YW | MILK |
|-------|----|----|-----|------|----|-----|------|
| 98 | 51 | 47 | 11 | -2.5 | 66 | 106 | 29 |

PE 5/21/25-7/1/25 TO ERKS JUMPSTART 4912 (RAAA# 4965660)
EST. DUE 3/10/26

Next, we feature two maternal granddaughters from the legendary, Red Rainbow Countess 32X female that has a long-time track record of injecting incredible maternal value into her daughters. There is nothing more valuable than the power of cow family and furthermore the consistency to generate like you find here. Adding a matron like this genetic gem to the roster opens the door of opportunity for the future of your program!

A high powered, Schuler Matchmaker 1974 sired daughter out of a female that has been stamping her daughters with consistent quality. The maternal pedigree of 405M supplies a long line of matrons to the equation, as she stacks several household names into her family tree. The "Countess" cow family is one that we are focusing on propagating because of the added mothering ability, fleshing ease, longevity, and high productivity. Take hold of the opportunity to add one of her caliber to your own cowherd while you can!



TMAS KING COWBOY 3729L ET
MATERNAL GRANDDAM OF LOT 22 & 23



TMAS KING COWBOY 3729L ET
MATERNAL GRANDDAM OF LOT 22 & 23



24

1BBC MISS DAY 453

RAAA 5033033 • TATTOO 453 • DOB 3/27/24 • 100% AR • A

TMAS CHVIAS 1745J ET

ROJAS TR CHIVAS 17109
 ROJAS FALLING WATER 6053
 DAMAR TRUMP C512
 DUNNS MULBERRY DAY 1106

TMAS MS MULBERRY DAY 855F

| PRO S | HB | GM | CED | BW | WW | YW | MILK |
|-------|----|----|-----|------|----|-----|------|
| 78 | 40 | 38 | 13 | -0.6 | 71 | 109 | 26 |

AI 5/20/25 TO J6 BULLETPROOF 542K (RAAA# 4635651)

PE 5/22/25-6/12/25 TO J6 BULLETPROOF 542K (RAAA# 4635651)

PE 5/22/25-6/12/25 TO ERKS JUMPSTART 4912 (RAAA# 4965660)

EST. DUE 4/28/26

1BBC Miss Day 453 is one that stands out from the pack, she comes with some exotic features in comparison to her breed cohort, and we find her intriguing features to be very eye appealing, and thought provoking in regards to her ability to generate stock that demand attention. This dark hided, rugged featured, sleek fronted and extra flexible built daughter of TMAS Chivas 1745J ET is built with show heifer production in mind. We think her opportunities for ROI will be realized quickly, and often.

25

1BBC MISS QUEST 456

RAAA 5033009 • TATTOO 456M • DOB 3/12/24 • 100% AR • A

TMAS CHVIAS 1745J ET

ROJAS TR CHIVAS 17109
 ROJAS FALLING WATER 6053
 HXC CONQUEST 4405P
 EIR X205

BMRA MS CONQUEST 410

| PRO S | HB | GM | CED | BW | WW | YW | MILK |
|-------|----|----|-----|------|----|-----|------|
| 78 | 40 | 37 | 12 | -0.9 | 66 | 106 | 22 |

AI 5/20/25 TO J6 BULLETPROOF 542K (RAAA# 4635651)

PE 5/22/25-6/12/25 TO J6 BULLETPROOF 542K (RAAA# 4635651)

PE 5/22/25-6/12/25 TO ERKS JUMPSTART 4912 (RAAA 4965660) 7/1/25-8/1/25

EST. DUE 4/7/26

1BBC Miss Quest 456 is another daughter of TMAS Chivas 1745J ET that deserves serious consideration on sale day! She is built right from the ground up, offering superior skeletal quality. We love the natural turn and sweep to her rib cage that she offers, while maintaining a feminine look from the profile. She stems from a tenured, HXC Conquest 4405P daughter that has reliably generated over the past decade. In fact, her first born daughter sold to the renowned, Pieper Red Angus of Nebraska.

26

1BBC MISS TRUMP 400

RAAA 4973753 • TATTOO 400 • DOB 2/22/24 • 100% AR • A

DAMAR TRUMP C512

RED SOO LINE POWER EYE 161X
 DAMAR OH BABY W168
 5L CASTING LOTS 1711-12A
 SCMh QUE 310

SCMH CASSIDY 527

| PRO S | HB | GM | CED | BW | WW | YW | MILK |
|-------|----|----|-----|------|----|----|------|
| 68 | 28 | 41 | 14 | -2.3 | 56 | 85 | 23 |

PE 5/21/25-7/1/25 TO ERKS JUMPSTART 4912 (RAAA# 4965660)

EST. DUE 3/11/26

1BBC Miss Trump 400 is a high powered, extra broody cow prospect that looks to be the source of both profitability and longevity. Her dam has been a reliable source of quality over several breeding seasons, and we feel sets the scene for a similar story to be told here. We are excited about the prospect of the ERKS Jumpstart 4912 sired progeny to come this next spring, stay ahead of the curve here with access to his first calf crop.

**TMAS RESOURCE 4728M**

MATERNAL BROTHER TO THE SIRE OF LOTS 24 & 25

**DAMAR OH BABY W168**

PATERNAL GRANDDAM OF LOT 26

27

IBBC MISS TRUMP 457

RAAA 5033025 • TATTOO 457 • DOB 2/12/24 • 100% AR • A

DAMAR TRUMP C512RED SOO LINE POWER EYE 161X
DAMAR OH BABY W168
TR SLA CASH 434B
MCPHEE DARLING 4914**TMAS MS DARLING 628D**

| PRO S | HB | GM | CED | BW | WW | YW | MILK |
|-------|----|----|-----|------|----|----|------|
| 62 | 21 | 41 | 13 | -0.7 | 58 | 92 | 23 |

AI 5/20/25 TO J6 BULLETPROOF 542K (RAAA# 4635651)

PE 5/22/25-6/12/25 TO J6 BULLETPROOF 542K (RAAA# 4635651)

PE 7/1/25-8/1/25 TO ERKS JUMPSTART 4912 (RAAA# 4965660)

IBBC Miss Trump 457 is the kind that will draw a crowd, she is an incredibly unique female that is massive footed, huge boned, and ties her long and feminine neck high at the top of her neatly laid in shoulder. She is bold in the shape of her rib cage and transitions into an extra stout and square hip and hind leg design. A truly unique female that offers a captivating look from the side. Her dam has been a very reliable source of quality, with several maternal brothers featuring in past editions of the Thomas Ranch Bull Sale.



28

IBBC MISS TRUMP 402

RAAA 4973767 • TATTOO 402 • DOB 3/30/24 • 100% AR • A

DAMAR TRUMP C512RED SOO LINE POWER EYE 161X
DAMAR OH BABY W168
BROWN PREMIER X7876
LSF GRA EMMA S635**SCMH DEE DEE 610**

| PRO S | HB | GM | CED | BW | WW | YW | MILK |
|-------|----|----|-----|------|----|----|------|
| 114 | 49 | 65 | 15 | -3.6 | 59 | 94 | 26 |

AI 5/20/25 TO J6 BULLETPROOF 542K (RAAA# 4635651)

PE 5/22/25-6/12/25 TO J6 BULLETPROOF 542K (RAAA# 4635651)

PE 7/1/25-8/1/25 TO ERKS JUMPSTART 4912 (RAAA# 4965660)

This beautiful daughter of Damar Trump C512 from SCMh Dee Dee 610 offers a bold and robust shape to her forerib and center body. She is an easy fleshing, stout made brood cow prospect that offers an extremely well-balanced silhouette from the profile. Her days in production will be highlighted by the limitless maternal value she has built in, along with her nicely designed udder structure and easy keeping body type. Note her leading profitability indexes to boot!

**IBBC MR CHIVAS 300**
MATERNAL BROTHER TO LOT 27

29

IBBC MISS TRUMP 452

RAAA 5033019 • TATTOO 452 • DOB 2/20/24 • 100% AR • A

DAMAR TRUMP C512RED SOO LINE POWER EYE 161X
DAMAR OH BABY W168
LORENZEN EDGY 3735
SCMH RED RUBY 120**SCMH DANICKA 613**

| PRO S | HB | GM | CED | BW | WW | YW | MILK |
|-------|----|----|-----|------|----|----|------|
| 84 | 39 | 46 | 13 | -1.1 | 53 | 83 | 24 |

AI 5/20/25 TO J6 BULLETPROOF 542K (RAAA# 4635651)

PE 5/22/25-6/12/25 TO J6 BULLETPROOF 542K (RAAA# 4635651)

PE 7/1/25-8/1/25 TO ERKS JUMPSTART 4912 (RAAA# 4965660)

EST. DUE 4/14/26

Practical, bold ribbed, big hipped, and moderate framed. There is no denying the maternal functionality that this female will provide to her new cowherd. A look into her pedigree however will reveal that this quality comes honestly, as maternal brothers have too been highlights of their respective marketing events. Cow power and consistency comes built in here.

**TMAS IBBC MR TRUMP 306**
FULL BROTHER IN BLOOD TO LOT 28**TMAS SMCH 223**
MATERNAL BROTHER TO LOT 29



LOT 30

This daughter of popular 2021 Canadian Western Agribition Grand Champion Red Angus Bull, Red Rainbow Concorde 28H, follows in his footsteps with her awesome phenotype. 1BBC Miss Concorde 459 comes with all the extras in regard to mass, dimension, and brood cow power. Her perfect profile is further complimented by her extra stoutness and three-dimensional build. A true sale feature!



RED RAINBOW CONCORDE 28H
SIRE OF LOT 30

30

1BBC MISS CONCORDE 459

RAAA 5033001 • TATTOO 459 • DOB 2/29/24 • 100% AR • A

RED RAINBOW CONCORDE 28H LFE BA LEWIS 3008B
RED RAINBOW LARKABA 26X
CRSL CANDY GIRL RED NORTHLINE CRUSHER 341Y
CRSL MISS ALEXA 109

| PRO S | HB | GM | CED | BW | WW | YW | MILK |
|-------|----|----|-----|------|----|----|------|
| 41 | 26 | 16 | 10 | -1.4 | 57 | 91 | 25 |

AI 5/20/25 TO J6 BULLETPROOF 542K (RAAA# 4635651)
PE 5/22/25-6/12/25 TO J6 BULLETPROOF 542K (RAAA# 4635651)
PE 7/1/25-8/1/25 TO ERKS JUMPSTART 4912 (RAAA# 4965660)
EST. DUE 3/17/26

31

1BBC MISS SPECIAL 451

RAAA 5033015 • TATTOO 451 • DOB 3/26/24 • 87.5% AR 12.5% XX • B

TMAS MR TRUMP 889F ET DAMAR TRUMP C512
PZC CARIBBEAN BREEZE 115 ET
TMAS MS WHO'S SPECIAL 503C MCPHEE REMARKABULL 4669
MCPHEE WHO'S SPECIAL 4912

| PRO S | HB | GM | CED | BW | WW | YW | MILK |
|-------|----|----|-----|------|----|----|------|
| 89 | 44 | 45 | 17 | -3.3 | 64 | 95 | 25 |

AI 5/20/25 TO J6 BULLETPROOF 542K (RAAA# 4635651)
PE 5/22/25-6/12/25 TO J6 BULLETPROOF 542K (RAAA# 4635651)
PE 7/1/25-8/1/25 TO ERKS JUMPSTART 4912 (RAAA# 4965660)
EST. DUE 3/7/26



LOT 31

1BBC Miss Special 451 is a bold ribbed, easy keeping daughter of the time tested, TMAS Ms Who's Special 503C female that has been a long-term, heavy-duty producer for the program. She is built with power in mind, being wide muzzled, stout skulled, bold bodied, and big hiped... she is certainly a brood cow in the making!



DAMARR TRUMP C512
2016 NAILE GRAND CHAMPION RED ANGUS BULL
PATERNAL GRANDSIRE OF LOT 31

32

1BBC MISS LIM 460

RAAA 5033029 • TATTOO 460 • DOB 3/30/24 • 50% AR 25% LM 25% AN • 3

PBRS 8305F

RLBH DAYS OF THUNDER ET

PBRS 6185D ET

CRSL PRINCESS

PZC TMAS FIRESTORM 1800 ET

5L LYDIA R435-58

| PRO S | HB | GM | CED | BW | WW | YW | MILK |
|-------|----|----|-----|------|----|----|------|
| 44 | | | 13 | -1.7 | 63 | 92 | 25 |

AI 5/20/25 TO J6 BULLETPROOF 542K (RAAA# 4635651)

PE 5/22/25-6/12/25 TO J6 BULLETPROOF 542K (RAAA# 4635651)

PE 7/1/25-8/1/25 TO ERKS JUMPSTART 4912 (RAAA# 4965660)

EST. DUE 3/7/26

A female that checks all the boxes with her ability to generate long term profits for a cowherd. This half-blood daughter from the CRSL Princess donor female that has been a proven producer for both Bradley Cattle Company and P Bar S Ranch of Oklahoma. She comes with longevity built in and will be the source of both maternal excellence and added profits.

**PZC TMAS FIRESTORM 1800 ET**

MATERNAL GRANDSIRE OF LOT 32

33

1BBC MISS CHIVAS 376

RAAA 4968812 • TATTOO 376 • DOB 9/13/23 • 100% AR • A

ROJAS TR CHIVAS 17109

PZC TMAS FIRESTORM 1800 ET

RED BAR-E-L KASSIE 117X

FOSTER'S TAMMILY 512/4419

RED FINE LINE MULBERRY 26P

DFRA TARMILY N512

| PRO S | HB | GM | CED | BW | WW | YW | MILK |
|-------|----|----|-----|------|----|----|------|
| 103 | 71 | 32 | 14 | -1.3 | 59 | 95 | 24 |

LOT 33A | TAG N51 | DOB: 9/2/25 | 52 LB. BW

HEIFER CALF BY 4MC KING OF THE COWBOYS 2112 (RAAA# 4578723)

An absolutely stunning fall calving female that is sired by the widely popular and proven AI stud known as Rojas TR Chivas 17109. 1BBC Miss Chivas 376 is a beautiful cherry red hided female that offers quality from the point of her tail to the tip of her nose. She is long and extended from her blade forward, while remaining bold and three dimensional in her rib design. She is long hiped, and square pinned with a hindleg that is built for the long run. Her mating to 4MC King of the Cowboys 2112 is one that should excite!



34

1BBC MISS CHIVAS 383

RAAA 4918238 • TATTOO 383 • DOB 9/17/23 • 100% AR • A

ROJAS TR CHIVAS 17109

PZC TMAS FIRESTORM 1800 ET

RED BAR-E-L KASSIE 117X

TMAS MS MULBERRY 816F TW

RED BLAIRS BINGO 581B

TMAS MS MULBERRY 407B

| PRO S | HB | GM | CED | BW | WW | YW | MILK |
|-------|----|----|-----|------|----|----|------|
| 84 | 59 | 26 | 14 | -1.6 | 57 | 89 | 25 |

PET1/21/24-2/15/25 TO 4MC KING OF THE COWBOYS 2112 (RAAA# 4578723)

1BBC Miss Chivas 383 is a descendant of the legendary Red Fine Line Mulberry 26P through the TMAS Ms Mulberry 407B donor dam that has been a significant building block in the Bradley Cattle Company Red Angus program. Her inclusion in the pedigree adds a volatile shot of maternal power, udder quality and generating potential. There is no replacement for a maternal pedigree that is loaded with reliable and consistent females!

**ROJAS TR CHIVAS 17109**

SIRE OF LOT 33-35



LOT 35 IBBC MISS CHIVAS 380

35

IBBC MISS CHIVAS 380

RAAA 4968804 • TATTOO 380 • DOB 9/15/23 • 100% AR • A

ROJAS TR CHIVAS 17109

PZC TMAS FIRESTORM 1800 ET
 RED BAR-E-L KASSIE 117X
 JOHNSON BLW FALCON 861
 JFCC SCARLET 466

| PRO S | HB | GM | CED | BW | WW | YW | MILK |
|-------|----|----|-----|-----|----|-----|------|
| 97 | 47 | 50 | 11 | 0.5 | 69 | 115 | 22 |

PE11/21/24-2/15/25 TO 4MC KING OF THE COWBOYS 2112 (RAAA# 4578723)

There is no denying the quality, balance, and symmetry that IBBC Miss Chivas 380 brings to the equation. A daughter of the legend himself, Rojas TR Chivas 17109, this is a stunning female from the profile that offers a chiseled look through her front third, that also remains bold and three-dimensional in her rib cage. We are excited about the prospect of 4MC King of the Cowboys 2112 sired cattle, and he mates up perfect here.

36

IBBC MISS TRUMP 3106

RAAA 4912482 • TATTOO 3106 • DOB 10/27/23 • 100% AR • A

DAMAR TRUMP C512

RED SOO LINE POWER EYE 161X
 DAMAR OH BABY W168
 WEBR TC CARD SHARK 1015
 GT CITA 4060

PZC MS CARDSHARK 6759 ET

| PRO S | HB | GM | CED | BW | WW | YW | MILK |
|-------|----|----|-----|------|----|----|------|
| 55 | 21 | 34 | 15 | -2.6 | 54 | 86 | 26 |

PE11/21/24-2/15/25 TO 4MC KING OF THE COWBOYS 2112 (RAAA# 4578723)

Pay attention here, as IBBC Miss Trump 3106 stems from maternal royalty. She is a granddaughter of the legendary, GT Cita 4060, a female that has etched her name among the most potent in Red Angus history, her timeless quality has spanned over two decades now, and the cattle have always been right for the times. She is built with tremendous length of body, shape, and dimension from every angle and is supported by a pedigree that will never go out of style!



GT CITA 4060
 MATERNAL GRANDDAM OF LOT 36



4MC KING OF THE COWBOYS 2112
 SERVICE SIRE TO THE RED ANGUS OFFERING



WCR CITA 5085C
 MATERNAL SISTER TO DAM OF LOT 36



37

IBBC HF MISS PLATINUM 599N

ASA 4548265 • TATTOO 599N • DOB 2/22/25 • PB SM

CKCC MR PLATINUM 3643L ET FRKG CKCC PLATINUM 009H ET
 WAGR MS INNOVATOR 9026G
 BFJV SPLASH OF LEDGER G977 TL LEDGER
 UDE 129C

| CE | BW | WW | YW | MILK | MARB | API | TI |
|------|-----|------|-------|------|------|-------|------|
| 11.5 | 1.8 | 74.9 | 107.4 | 15.8 | 0.19 | 118.5 | 76.1 |

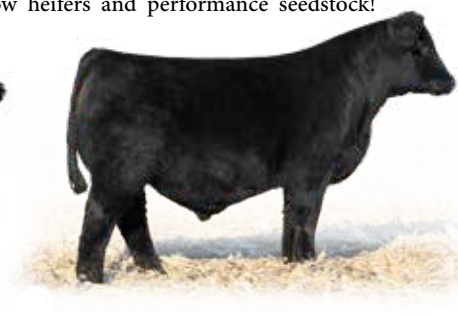
IBBC HF Miss Platinum 599N is flawless from the side, offering a look of quality and balance that is hard to deny. Invest in the future of your breeding program with a female that has the credentials to take you to the next level, not just in the showring, but in the breeding pasture as well! The stunning profile and chiseled look of quality that this dynamic female offers goes way beyond her look from the side, as she offers tremendous power and dimension from behind. Her sire, CKCC Mr Platinum 3643L was the featured lot 1 in the CK Cattle and Wager Cattle 2024 Production Sale and is a son of the \$40,000 WAGR Ms Innovator 9026G donor for CK Cattle and Maple Lane Farms. A must see on sale day if you are in the market for a female to generate show heifers and performance seedstock!



IBBC MISS SAVAGE M2402
MATERNAL SISTER TO LOT 37



BFJV SPLASH OF LEDGER G977
DAM OF LOT 37



CKCC MR PLATINUM 3643L ET
SIRE OF LOT 37



LOT 38 1BBC HF MISS MAVERICK 510N

38

1BBC HF MISS MAVERICK 510N

ASA 4554375 • TATTOO 510N • DOB 1/17/25 • PB SM

MAVERICK

SC PAY THE PRICE C11

MLJM 197E

BOWJ 9L

TL REVENANT 35

SASHA MAE

| CE | BW | WW | YW | MILK | MARB | API | TI |
|-----|-----|------|-------|------|------|-------|------|
| 8.7 | 3.0 | 74.9 | 108.3 | 18.2 | 0.24 | 113.2 | 73.9 |

This showstopping daughter of Maverick stems from the powerful Sasha Mae lineage that works for Bowling Cattle Company. This is the same cow family that generated one of the featured bulls in the 2025 NWSS "One & Only" Simmental Sale, the impressive BOWJ Reckless 3M. This wild featured female offers the extra "bells and whistles" that are needed to produce at a very high level. We love her extra stoutness, bone, and shape. She ties her neck very high at the top of her shoulder and transitions seamlessly from end to end. The sire of 510N is the many times National Champion Percentage Simmental Bull, Maverick, a son of the two-time National Western Stock Show Grand Champion, SC Pay The Price C11. Genetics like this do not cost... they only pay!



MAVERICK

SIRE OF LOT 38



BOWJ 9L

DAM OF LOT 38



BOWJ RECKLESS 3M

MATERNAL BROTHER TO DAM OF LOT 38



MAVERICK

2023 NWSS GRAND CHAMPION
PERCENTAGE SIMMENTAL BULL



LOT 40 1BBC MISS J 014M

39

1BBC RED 074M

ASA 4458073 • TATTOO 074M • DOB 2/4/24 • PB SM

RUST BET ON RED 8KW/C BET ON RED 481H
MISS RUSGOLD 115F
W/C LAST CALL 206A
MS FIXATION HR Y2736**W/C MISS WERNING 529C**

| CE | BW | WW | YW | MILK | MARB | API | TI |
|------|-----|------|------|------|------|-------|------|
| 11.4 | 1.5 | 65.4 | 98.6 | 18.7 | 0.02 | 115.8 | 68.3 |

AI 5/20/25 TO GCC NIGHT OWL 3104L (ASA# 4284092)

PE 6/8/25-8/1/25 TO ROLR MR BACKCOUNTRY 186M (ASA# 4383029)
EST. DUE 4/13/26

1BBC Red 074M is a more moderate framed, deep bodied, bold sprung daughter of Rust Bet On Red 8K that is a brood cow in the making! This powerful female is supported by the very impressive W/C Miss Werning 529C female, who is one of the greatest daughters of W/C Last Call 206A in existence. Both phenotypically and genetically she offers a supreme level of balance and consistency.

40

1BBC MISS J 014M

ASA 4494338 • TATTOO 014M • DOB 2/24/24 • 1/2 SM 1/2 AR

RUST BET ON RED 8KW/C BET ON RED 481H
MISS RUSGOLD 115F
ROJAS TR CHIVAS 17109
LAZY MISS CHILLI 524-9300**LAZYJ 1148-524**

| CE | BW | WW | YW | MILK | MARB | API | TI |
|------|------|------|------|------|------|-------|------|
| 14.6 | -1.2 | 60.5 | 95.4 | 26.5 | 0.02 | 113.7 | 64.7 |

AI 5/20/25 TO GCC NIGHT OWL 3104L (ASA# 4284092)

PE 6/8/25-8/1/25 TO ROLR MR BACKCOUNTRY 186M (ASA# 4383029)
EST. DUE 2/23/26

Leading off the half-blood daughters of Rust Bet On Red 8K is the smooth and extra feminine, 1BBC Miss J 014M. She is chiseled about her front third, bold ribbed, extra soft flanked, and sets to the surface with confidence when set into motion. We love the natural turn and sweep to her rib cage, which only aids in her extreme look of balance and eye appeal from the side!

41

1BBC RED 034M

ASA 4458070 • TATTOO 034M • DOB 2/16/24 • 1/2 SM 1/2 AR

RUST BET ON RED 8KW/C BET ON RED 481H
MISS RUSGOLD 115F
RED ANGUS
RED ANGUS**40**

| CE | BW | WW | YW | MILK | MARB | API | TI |
|------|------|------|-------|------|------|-------|------|
| 13.7 | -0.8 | 66.2 | 100.2 | 21.0 | 0.14 | 105.4 | 69.7 |

AI 5/20/25 TO GCC NIGHT OWL 3104L (ASA# 4284092)

PE 6/8/25-8/1/25 TO ROLR MR BACKCOUNTRY 186M (ASA# 4383029)
EST. DUE 2/27/26**W/C BET ON RED 481H**

\$192,500 PATERNAL GRANDSIRE OF LOTS 39-43

The 1BBC Red 034M female continues the trend set by these red hided daughters of Rust Bet On Red 8K with her extra productive look and design. She is one of the looser hided, functionally constructed females of the tribe. When set in motion, she handles her skeleton with authority and confidence from end to end and looks to have the joint work to last a long and high-performance breeding tenure.



GCC NIGHT OWL 3104L
SERVICE SIRE TO THE SIMMENTAL OFFERING



ROLR MR BACKCOUNTRY 186M
SERVICE SIRE TO THE SIMMENTAL OFFERING



ETR GCC REAL TIME G380
SIRE OF LOT 44

42

1BBC MISS CRYSTAL 044M

ASA 4494340 • TATTOO 044M • DOB 2/19/24 • 1/2 SM 1/2 AR

RUST BET ON RED 8K

W/C BET ON RED 481H

MISS RUSGOLD 115F

LSF SRR CRYSTAL F8062 J1276

LSF SRR CONVERSION 7094E

LSF SRR CRYSTAL B4004 F8062

| CE | BW | WW | YW | MILK | MARB | API | TI |
|------|------|------|-------|------|------|-------|------|
| 13.5 | -1.2 | 74.6 | 115.9 | 23.1 | 0.26 | 123.3 | 78.4 |

AI 5/20/25 TO GCC NIGHT OWL 3104L (ASA# 4284092)

PE 6/8/25-8/1/25 TO ROLR MR BACKCOUNTRY 186M (ASA# 4383029)

EST. DUE 3/17/26

1BBC Miss Crystal 044M is the kind that will be easy to load up on sale day and build the cowherd around. She comes with extra shape and substance, and the surface area that she consumes is more than impressive. The sire candidates for service on one like her will be limitless. A wide-bodied beauty with extreme breeding flexibility!

43

1BBC RED 04M

ASA 4458143 • TATTOO 04M • DOB 2/15/24 • 1/2 SM 1/2 CS

RUST BET ON RED 8K

W/C BET ON RED 481H

MISS RUSGOLD 115F

1BBC MISS 114

1BBC RED ANGUS

1BBC RED ANGUS

| CE | BW | WW | YW | MILK | MARB | API | TI |
|------|-----|------|------|------|------|------|------|
| 13.3 | 0.4 | 66.9 | 98.5 | 21.4 | 0.02 | 96.7 | 66.2 |

AI 5/20/25 TO GCC NIGHT OWL 3104L (ASA# 4284092)

PE 6/8/25-8/1/25 TO ROLR MR BACKCOUNTRY 186M (ASA# 4383029)

EST. DUE 3/17/26

Don't catch yourself in a haze when these red hided half-blood females sell, as a group they represent a perfect set of females to build a consistent and profitable cowherd from. 1BBC Red 04M is a prime example of the added practicality and uniformity that these Rust Bet On Red 8K daughter's offer!

44

1BBC MISS REAL TIME 404M

ASA 4502342 • TATTOO 404M • DOB 3/26/24 • 1/2 SM 1/2 AR

ETR GCC REAL TIME G380

PROFIT

HCCO COUNTESS 127C

CVRA 256C

HXC CONQUEST 4405P

BIEBER DURHEIM 256A

| CE | BW | WW | YW | MILK | MARB | API | TI |
|-----|-----|------|-------|------|------|-------|------|
| 8.5 | 2.1 | 80.4 | 115.9 | 23.4 | 0.22 | 113.2 | 75.7 |

AI 5/20/25 TO GCC NIGHT OWL 3104L (ASA# 4284092)

PE 6/8/25-8/1/25 TO ROLR MR BACKCOUNTRY 186M (ASA# 4383029)

EST. DUE 2/27/26

Here is a direct daughter of the increasingly popular ETR GCC Real Time G380, the full brother to the high selling female from the 2019 Griswold "Classic" Female Sale that went on to be a highly competitive female for the Baty family of Colorado. This future matron is stout boned, big backed, stout hiped, and will draw a crowd on sale day. It's no secret that half-blood Simmentals are some of the most productive in the business, and work in a variety of breeding schematics depending on your program's goals!

45

1BBC REMEDY 084M

ASA 4458074 • TATTOO 084M • DOB 2/5/24 • 3/4 SM 1/4 AN

SO REMEDY 7FHPF/HILL UPRISING C104
B&K CREAM SODA 8D
PROFIT
JFCC 83 JANE 905**BFJV JANE'S PROFIT H066**

| CE | BW | WW | YW | MILK | MARB | API | TI |
|-----|-----|------|-------|------|-------|------|------|
| 9.6 | 3.2 | 75.8 | 111.7 | 15.7 | -0.05 | 94.7 | 65.2 |

AI 5/20/25 TO GCC NIGHT OWL 3104L (ASA# 4284092)

PE 6/8/25-8/1/25 TO ROLR MR BACKCOUNTRY 186M (ASA# 4383029)

EST. DUE 3/14/26



It's hard not to appreciate the functionality and maternal strength that 1BBC Remedy 084M exudes. She is the type and kind of female that is making her sire so popular, nationwide. Deep, sound, smooth, feminine, and maternal. These fundamental traits combined with consistency in production, is the reason why the \$530,000 SO Remedy 7F continues to set the standard for quality across the industry!

46

1BBC EDSL 124M

ASA 4453408 • TATTOO 124M • DOB 3/2/24 • PB SM

W/C CYCLONE 385HW/C BANKROLL 811D
W/C ANGEL 8598F
WS HIGH REGARD D58
JAZZY DANDY D29A**LEFS MS HIGH REGARD 956X**

| CE | BW | WW | YW | MILK | MARB | API | TI |
|------|-----|------|-------|------|------|-------|------|
| 10.9 | 1.5 | 70.2 | 108.7 | 22.1 | 0.18 | 130.6 | 75.6 |

AI 5/20/25 TO GCC NIGHT OWL 3104L (ASA# 4284092)

PE 6/8/25-8/1/25 TO ROLR MR BACKCOUNTRY 186M (ASA# 4383029)

EST. DUE 3/17/26



Look in here, as this daughter of W/C Cyclone 385H has cow power written all over her. 385H left a long trail of daughters during his tenure at Bruhn Cattle Company, as they are cattle that are blessed with a tremendous amount of body and dimension. They remain productive, functional, and consistent from one stage of maturity to the next. We are confident that many will admire this female for her substance, genuine depth, and eventually, production merit!

SO REMEDY 7F

\$530,000 SIRE OF LOT 45

47

1BBC MISS 3102

ASA 4548279 • TATTOO 3102L • DOB 8/29/23 • 1/2 SM 1/2 AR

TMAS MR TRUMP 889F ETDAMAR TRUMP C512
PZC CARIBBEAN BREEZE 115 ET
COME AS U R RED ROCKET
DEEG MS HOLA 59B**RUST MISS HOLA 7101E**

| CE | BW | WW | YW | MILK | MARB | API | TI |
|-----|-----|------|-------|------|------|------|------|
| 7.9 | 1.8 | 74.2 | 105.0 | 21.6 | 0.08 | 97.6 | 67.3 |

PE 11/21/24-2/15/25 TO 4MC KING OF THE COWBOYS 2112 (RAAA# 4578723)



The lone, fall calving, red hided, SimGenetic matron pleads a very impressive case of quality and notoriety. This daughter of TMAS Mr Trump 889F ET has production and profit generating potential written all over her body type. As you examine the build of this female, you will notice her eye appeal, rib shape, and her true skeletal quality! She comes bred up to the impressive, 4MC King of the Cowboys 2112 stud.

BFJV JANE'S PROFIT H066

DAM OF LOT 45





SCHRADER'S GUARDIAN 477M ET
2025 AICA JUNIOR NATIONAL GRAND CHAMPION BRED & OWNED BULL
Owned by Schrader Ranch, Thomas Ranch, Bradley Cattle, and Hankins Farms



P.O. Box Z

De Soto, KS 66018



SATURDAY, OCTOBER 4, 2025 . 6 PM CST

Hankins Farms sale facility in Republic, Missouri