



MONDAY, 12.22.2025
7:00 P.M. C.S.T. | POWERED BY 



AUCTIONEER ... Ryan Dorran

SALE MANAGEMENT TEAM ...



Kiley McKinna, 402.350.3447
mcmarketingsales@aol.com
Wiley Fanta, 320.287.0751
wiley@mcmarketingmanagement.com



Randall O. Ratliff
615.330.2735 | Randy@RRMktg.com

WATCH THE SALE & BID ONLINE ...



Online bidding provided in partnership with CCI.LIVE. Join us to watch the sale or bid online. Please create your account and obtain credentials prior to the auction date. Login not necessary to view the auction live.

YOU ARE WELCOME TO COME VIEW THE CATTLE SALE DAY
OR ANYTIME BEFORE!

ACCOMMODATIONS ...

HAMPTON INN, Clinton, OK	580.323.4267
HOLIDAY INN, Atlas, OK	580.482.1273
HOLIDAY INN, Clinton, OK	580.323.1950
THE DYER HOUSE, Hoboart, OK	817.791.2406

MONDAY, 12.22.2025
7:00 P.M. C.S.T. | POWERED BY 



TERMS & CONDITIONS ... Cattle will sell under the standard terms and conditions of the Red Angus Association.

REGISTRATION & TRANSFERS... Within 60 days of the date of the sale, the cattle sold will be transferred (registrations) to the new owners through the offices of the Red Angus Association. The fee is paid for by the seller.

PAYMENT ... All lots must be paid for immediately following the conclusion of the sale unless prior payment arrangements have been made with any representative of the sales team. Buyers are welcome to pay by credit card. If so, you will be charged a 3% fee on the total sum of your purchase.

DELIVERY ... Buyers are responsible for any shipping cost pertaining to embryo purchases and transportation of the live cattle. The Freeman team will work together with sellers to make this the easiest and most efficient process possible.

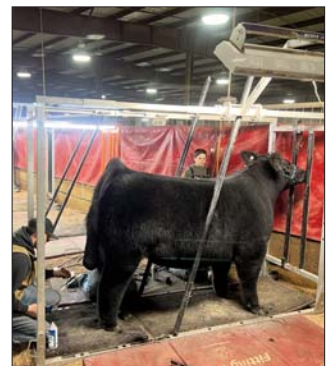
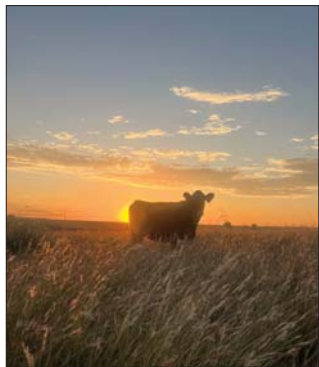
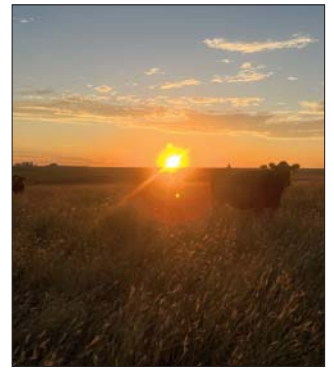
LIVESTOCK MORTALITY INSURANCE ... Any representative of the sales team can assist any buyer with insurance regarding their purchases.

LIABILITY ... All persons attending the sale, do so at their own risk, legal or otherwise for their safety. The seller, sale management, and sales staff assume no responsibility or liability for property loss or any accidents that may occur.



FEATURING 65 of the FINEST REGISTERED RED ANGUS
from the HEART OF THE FREEMAN BEEF GENETICS PROGRAM.

SELLING ... Show Heifer Prospects • Yearling Heifers • Bred Females • Genetics





Freeman Beef Genetics has a deep root in the Great Plains. Ralph Freeman was born on the Matodor ranch in Texas in 1924. His parents ended up near the fertile elk creek bottom between Hobart and Sentinel Oklahoma. This elk creek bottom and the dry hills around it are where Ralph grew up before heading off to WW2.

Upon his return from Germany he married Maurine Hopkins and together they raised four children near Sentinel Oklahoma. Their boy Charles Ralph Freeman, DVM grew up on a cotton plow in the same area as his father and grew to dislike cotton farming and this strengthened his desire for animal agriculture and gave him a desire to go to veterinary school at Oklahoma State University. Charles graduated from veterinary school and returned to SW Oklahoma to practice veterinary medicine in 1973.

Charles and Betty Freeman raised their five children, CR, Valerie, Andrea, Melody, and Joe Max in Hobart, Oklahoma. CR the oldest son of Charles and Betty Freeman founded premium Beef Feeders and currently feeds natural cattle and farms alfalfa, cereal grains, and other forages in the same elk creek bottoms that his grandfather was raised in. Joe Max and Meghan Freeman returned to southwest Oklahoma following veterinary school in 2010, and began raising their family in the same region Joe Max grew up. Joe Max currently practices veterinary medicine and raises registered red and black angus cattle.

Our family has always had one constant in western Oklahoma agriculture and that is the production of beef cattle. We raise what we think are the most efficient and highest quality red and black angus cattle we can produce!



JOE MAX FREEMAN, DVM, 580.352.1985
WESTERN PRAIRIE VETERINARY HOSPITAL

BLAKE BARTELS, 541.815.7588
RYAN HUNT, 580.281.0484

BOVI-GENE, LLC | 580.352.1985
13435 State Hwy 44, Hobart, OK 73521
freemanbeefgenetics.com



OOHF MARY KATE 19H25

RED ANGUS | RAA: 5181083 | DOB: 03.17.2025 | TATTOO: 19H

DUFF CORNERSTONE 16136
DUFF RED WOOD 1941
DUFF DIXIE ERICA 144 1532

MANN RED BOX 55C
WEBR MARY KATE 19H
896X ULRA

RED BLAIRS BINGO 581B
DUFF JUANADA 927K 246
WCR HAMMELECH 812Z
DUFF BL 505 DIXIERERICA 144
SLGN WIDELOAD 920W
PELTON MISS AA 0839U
RED FINE LINE MULBERRY 26P
ULRA SMANATHA S89

CED	11	HPG	11	REA	0.19
BW	-0.2	CEM	6	FAT	0.03
WW	63	STAY	14	PROS	86
YW	98	MARB	0.29	HB	53
MILK	23	YG	0.04	GM	34
ME	0	CW	17		

Heifer 19H is a beautifully designed March daughter of Duff Red Wood 1941, and she showcases the balance, body depth, and correctness that have made Red Wood a rising influence in the breed. This young female is especially attractive in her lines—level topped, square hipped, and built with a clean, extended front end that gives her a naturally stylish presence. Her dam, Weber Mary Kate 19H, stems from a productive and highly reliable cow family known for structural integrity and maternal longevity. That foundation comes through in this heifer's softness of rib, her easy stride, and the brood-cow look she carries even at a young age. She's the kind that starts with show-ring style and ends with years of real-world value—a complete, functional, and eye-catching open heifer that will be fun to develop and even more rewarding to keep.

Retaining the rights to one IVF cycle.



FREE MISS POWER 2519

RED ANGUS | RAA: 5170047 | DOB: 02.23.2025 | TATTOO: 2519

RED SIX MILE SAKIC 832S
PZC TMAS FIRESTORM 1800 ET
GT CITA 4060

RED SOO LINE POWER EYE 161X
FREE MISS POWER 82-F
RED MRLA MISS 5390C

RED SIX MILE AVIATOR 217P
RED SIX MILE SIERA 257P
CITATION 138
JMDF MISS LANA
RED COCKBURN RIBEYE 308U
RED TR LYNN 301R
MRLA NEW ERA 87Y
RED MRLA 793R

CED	14	HPG	11	REA	0
BW	-1.5	CEM	7	FAT	-0.02
WW	61	STAY	12	PROS	72
YW	90	MARB	0.2	HB	40
MILK	29	YG	0	GM	32
ME	-4	CW	21		

Powerful, striking, and built with a silhouette that demands attention—she is a classic example of what the Firestorm line does best. Firestorm daughters are admired nationwide for their ultra-feminine front ends, extra muscle expression, and commanding show presence, and this February female rises to that standard with ease. She's extended through her neck and front third, yet bold and expressive over her top and hip. On the maternal side, Free Miss Power 82-F contributes the structural integrity, udder quality, and longevity this cow family is known for. That influence shows in 2519's correct angles, soft movement, and the maternal look she carries even at a young age. She's the type of heifer that combines look with substance—one that can go compete, then transition seamlessly into a productive, long-term female you'll be proud to build around.



FREE AMAL 6061 2528 ET

RED ANGUS | RAA: 5170057 | DOB: 02.27.2025 | TATTOO: 2528

SIX MILE JOHN WICK 882E
SIX MILE PARABELLUM 675G
RED SIX MILE KURUBA 712A

PZC TMAS FIRESTORM 1800 ET
ROJAS AMAL 6061
SIX MILE LAKOTA 112Y

RED U-2 RECKONING 149A
RED SIX MILE & CO GLORIA 29A
MRLA NEW ERA 87Y
RED SIX MILE KURUBA 319X
RED SIX MILE SAKIC 832S
GT CITA 4060
VGW GAME PLAN 816
SIX MILE LAKOTO 16W

CED	9	HPG	12	REA	0.17
BW	2.7	CEM	5	FAT	0
WW	74	STAY	11	PROS	67
YW	112	MARB	0.18	HB	33
MILK	25	YG	0.01	GM	35
ME	1	CW	26		



DAM, ROJAS AMAL 6061

Here's a heifer with natural presence and brood-cow quality written all over her. Sired by Six Mile Parabellum 675G, she carries the trademark depth, foot quality, and muscle pattern that have made Parabellum daughters some of the most admired young females in the breed. This February heifer is especially impressive in the way she combines body and softness without sacrificing look—she's smooth-jointed, big-centered, and tracks with confidence and ease. On the bottom side, she's backed by the influential Rojas Amal 6061, a donor line known for maternal reliability, structural soundness, and striking femininity. That heritage shines through in 2528's balance and correctness. She's the kind that develops into a fault-free, long-lasting female—and one with enough look and shape to catch a judge's eye along the way. A high-quality open heifer with both show appeal and long-term upside.

Retaining the rights to one IVF cycle.



DAM, ROAS AMAL 6061



4

FREE AMAL 6061 25201

RED ANGUS | RAA: 5170767 | DOB: 02.20.2025 | TATTOO: 25201

CED	BW	WW	YW	MILK	ME	HPG	CEM	STAY	MARB	YG	CW	REA	FAT	PROS	HB	GM
9	2.7	74	112	25	1	12	5	11	0.18	0.01	26	0.16	0	67	33	34

SIX MILE JOHN WICK 882E
SIX MILE PARABELLUM 675G
RED SIX MILE KURUBA 712A

PZC TMAS FIRESTORM 1800 ET
ROJAS AMAL 6061
SIX MILE LAKOTA 112Y

RED U-2 RECKONING 149A
RED SIX MILE & CO GLORIA 29A
MRLA NEW ERA 87Y
RED SIX MILE KURUBA 319X
RED SIX MILE SAKIC 832S
GT CITA 4060
VGW GAME PLAN 816
SIX MILE LAKOTO 16W

Here is an exceptionally well-balanced February heifer who brings together the strength of Six Mile Parabellum 675G with the proven maternal consistency of Rojas Amal 6061. Parabellum offspring are known for their striking foot and leg structure, extra body, and bold muscle pattern—and this female expresses those qualities with ease. Her dam, the highly regarded Rojas Amal 6061, adds the femininity, udder quality, and brood-cow reliability that continue to define this cow line. That influence shows in 25201's softness of rib, her attractive front end, and the maternal character she already portrays. She blends natural dimension with a crisp, eye-catching look—making her the kind of open heifer that not only has show appeal, but also the genetic depth to become a cornerstone female in any progressive Red Angus program.



GRANDDAM, ROJAS AMAL 6061



5

FREE AMAL 22502 2588 ET

RED ANGUS | RAA: 5170041 | DOB: 04.16.2025 | TATTOO: 2588

CED	BW	WW	YW	MILK	ME	HPG	CEM	STAY	MARB	YG	CW	REA	FAT	PROS	HB	GM
12	-0.6	71	103	24	-8	12	8	16	0.25	0.03	17	0.18	0.02	-	76	-

SIX MILE JOHN WICK 882E
SIX MILE PRIVATE STOCK 32H
RED SIX MILE MS FRADO 32F

DUFF RED WOOD 1941
DUFF AMAL 6061 22502
ROJAS AMAL 6061

RED U-2 RECKONING 149A
RED SIX MILE & CO GLORIA 29A
WEBER REFORM 618
RED BAR-E-L FRADO 133B
DUFF CORNERSTONE 16136
DUFF DIXIE ERICA 144 1532
PZC TMAS FIRESTORM 1800 ET
SIX MILE LAKOTA 112Y

A late-April standout with breed-leading eye appeal, she blends the unmistakable look of Six Mile Private Stock with the maternal depth of the Duff Amal 6061 lineage. Private Stock daughters are known for their balance, foot quality, and striking presence—and this young female is no exception. She's long-necked, attractive from every angle, and carries that smooth, soft-centered design that sets elite Red Angus females apart. Her dam, Duff Amal 6061 22502, contributes the brood-cow character and longevity this cow family is built on. The result is an open heifer that's elegant in her silhouette, fluid in her movement, and developing with the kind of dimension that promises both show ring upside and long-term maternal value. A youthful prospect with all the ingredients to grow into a front-pasture female.



GRANDDAM, ROJAS AMAL 6061



6

FREE AMAL 22502 2513 ET

RED ANGUS | RAA: 5170065 | DOB: 02.20.2025 | TATTOO: 2513

CED	BW	WW	YW	MILK	ME	HPG	CEM	STAY	MARB	YG	CW	REA	FAT	PROS	HB	GM
12	-0.6	71	103	24	-8	12	8	16	0.25	0.03	17	0.18	0.02	-	76	-

SIX MILE JOHN WICK 882E
SIX MILE PRIVATE STOCK 32H
RED SIX MILE MS FRADO 32F

DUFF RED WOOD 1941
DUFF AMAL 6061 22502
ROJAS AMAL 6061

RED U-2 RECKONING 149A
RED SIX MILE & CO GLORIA 29A
WEBER REFORM 618
RED BAR-E-L FRADO 133B
DUFF CORNERSTONE 16136
DUFF DIXIE ERICA 144 1532
PZC TMAS FIRESTORM 1800 ET
SIX MILE LAKOTA 112Y

This is a beautifully made February female who embodies the eye appeal and structure that have made Six Mile Private Stock a household name in the Red Angus breed. She is long-fronted, sleek in her design, and puts together an attractive silhouette without sacrificing the depth and width that give a young female longevity. Her dam, Duff Amal 6061 22502, continues to elevate her reputation as a producer of feminine, correct daughters with extra maternal quality—and 2513 is no exception. She is soft in her rib, fluid in her stride, and has that smooth, effortless look that makes great show heifers and even better cows. With her blend of balance, style, and maternal predictability, this open heifer is the kind that simply gets better every day. A high-upside prospect with an exceptionally bright future.



GRANDDAM, ROJAS AMAL 6061



7

FREE AMAL 22502 25200

RED ANGUS | RAA: 5170769 | DOB: 02.20.2025 | TATTOO: 25200

CED	BW	WW	YW	MILK	ME	HPG	CEM	STAY	MARB	YG	CW	REA	FAT	PROS	HB	GM
12	-0.6	71	103	24	-8	12	8	16	0.25	0.03	17	0.18	0.02	-	76	-

SIX MILE JOHN WICK 882E
SIX MILE PRIVATE STOCK 32H
RED SIX MILE MS FRADO 32F

DUFF RED WOOD 1941
DUFF AMAL 6061 22502
ROJAS AMAL 6061

RED U-2 RECKONING 149A
RED SIX MILE & CO GLORIA 29A
WEBER REFORM 618
RED BAR-E-L FRADO 133B
DUFF CORNERSTONE 16136
DUFF DIXIE ERICA 144 1532
PZC TMAS FIRESTORM 1800 ET
SIX MILE LAKOTA 112Y

A striking February-born female who captures the best traits of the Six Mile Private Stock lineage—balance, structural quality, and an unmistakably show-worthy look. She reads elegant from the side profile with a refined neck, a smooth shoulder, and the kind of top-line and hip design that make a heifer immediately stand out in a pen. Private Stock daughters have been admired for their combination of femininity and substance. Her dam, Duff Amal 6061 22502, continues to cement herself as a no-miss producer of functional, attractive females. That maternal influence shows up in 25200's rib shape, her soft center, and her confident, fluid stride. She's the type of heifer that grows better every week—complete, eye-catching, and perfectly suited for both competitive ambitions and long-term cow power. A high-quality open heifer with all the ingredients of a future cornerstone female.



DAM, CITA 16144



8

FREE CITA 16144 2509 ET

RED ANGUS | RAA: 5170059 | DOB: 02.15.2025 | TATTOO: 2509

CED	BW	WW	YW	MILK	ME	HPG	CEM	STAY	MARB	YG	CW	REA	FAT	PROS	HB	GM
14	-1.7	64	96	28	-5	11	6	10	0.38	-0.04	4	-0.03	-0.01	52	28	24

ROJAS RIOJA 6052
DUFF RED BLOOD 18114
 DUFF JUANADA 927K 15124

RED BLAIRS BINGO 581B
DUFF CITA 4060 16144
 GT CITA 4060

PZC TMAS FIRESTORM 1800 ET
 SIX MILE LAKOTA 112Y
 RED CROWFOOT OLE'S OSCAR
 O C C JUANADA 927K
 RED RINGSTEAD KARGO 215U
 WSF MS YANKEE 13T 12W
 CITATION 138
 JMDF MISS LANA

Here is a beautiful example of the kind of eye-catching, maternally driven cattle the Duff Red Blood line is known for. Red Blood consistently sires females with extra body capacity, shape, and that effortless structural design—and this mid-February heifer is no exception. She's smooth and refined through her front end, yet exhibits the dimension and power that make her stand out among her contemporaries. Her dam, Duff Cita 4060 16144, traces back to one of the most trusted female families in the Duff program, noted for longevity, udder quality, and fertility. That influence shows through in 2509's soft center, functional build, and quiet, confident presence. She's got the maternal look, the balance, and the structural integrity to develop into the kind of cow every program needs more of—while still offering enough look to be competitive in the show ring.



9

FREE WIDELOAD BLOOD 2501

RED ANGUS | RAA: 5170061 | DOB: 01.31.2025 | TATTOO: 2501

CED	BW	WW	YW	MILK	ME	HPG	CEM	STAY	MARB	YG	CW	REA	FAT	PROS	HB	GM
18	-4.7	64	96	29	-4	9	7	14	0.43	-0.02	15	0.16	0	83	43	39

ROJAS RIOJA 6052
DUFF RED BLOOD 18114
 DUFF JUANADA 927K 15124

BLAIR'S EXTERNAL LAW
FREE WIDELOAD LAW 23093
 FREE MISS WIDELOAD 27H

PZC TMAS FIRESTORM 1800 ET
 SIX MILE LAKOTA 112Y
 RED CROWFOOT OLE'S OSCAR
 O C C JUANADA 927K
 DUFF NAPOLEON 232
 BAR-E-L ERICA 74A
 PELTON WIDELOAD 78B
 FREE MISS POWER 82-F

A January-born female with extra maturity and presence, She is one that immediately reads like a front-pasture kind. Sired by Duff Red Blood, she carries the trademark depth, function, and maternal look that have made his daughters some of the most sought-after young cows in the breed. This heifer is especially impressive in her body mass and center dimension—big-ribbed, square-made, and built with a practical, easy-keeping design. Her dam, Free Wideload Law 23093, adds another layer of power and structural strength. That influence shows up in 2501's bold rib cage, strong top, and the way she plants each step with confidence. She blends femininity with real-world functionality, giving her both show-ring presence and long-term production value. A high-quality open heifer with the kind of completeness and balance that never goes out of style. Retaining the rights to one IVF cycle.



FREE SMASH 2544 ET

RED ANGUS | RAA: 5170063 | DOB: 03.10.2025 | TATTOO: 2544

CED	BW	WW	YW	MILK	ME	HPG	CEM	STAY	MARB	YG	CW	REA	FAT	PROS	HB	GM
12	-0.8	60	93	29	0	9	5	16	0.08	-0.01	16	0.3	0.02	66	49	17

DUFF-JC 4REAL 16250
DUFF FEARLESS 20123
 PELTON MISS AJA 0839U

RED LAZY MC CC DETOUR 2W
DUFF SMASH 117S 18403
 RED EGGEN SMASH MISS 117S

DUFF NAPOLEON 232
 DUFF AMIGO 927K JUANADA 071
 5L NORSEMAN KING 2291
 PELTONS MISS IDA 0547R
 RED RMJ REDMAN 1T
 RED LAZY MC BESS 12S
 RED LAZY MC SMASH 41N
 RED EGGEN KING ROB MISS 61L

Here is the kind of female that effortlessly combines power with refinement. Sired by Duff Fearless, she inherits the bold body shape, stout structure, and expressive muscle pattern that have pushed Fearless daughters into the spotlight nationwide. This March-born heifer is especially striking in her build—big-bodied and wide-based, yet still clean, feminine, and attractive up front. Her maternal side is anchored by Duff Smash 117S 18403, a cow family known for adding consistency, udder quality, and long-term productivity. Those traits shine through in 2544's balance, her structural correctness, and the brood-cow character she already exhibits. She's the type that's easy to appreciate from any angle making her equally appealing to both show-minded and production-focused cattlemen. A versatile, high-potential open heifer built for the long haul.



FREE ENCHANTRESS 2520

RED ANGUS | RAA: 5170045 | DOB: 02.24.2025 | TATTOO: 2520

CED	BW	WW	YW	MILK	ME	HPG	CEM	STAY	MARB	YG	CW	REA	FAT	PROS	HB	GM
12	-0.3	74	126	24	4	13	7	15	0.21	0.06	35	0.27	0.01	106	61	45

WEBR TC CARD SHARK 1015
MLK BIG FOOT
 TC CUPCAKE 03Y

GMRA TRINITY 5222
FREE ENCHANTRESS 6E
 BIEBER ENCHANTRESS 217B

WEBR DOC HOLLIDAY 2N
 PFFR MS NYACK 237
 3 ACES SIDEWAYS
 MEADO-WEST LUANNA
 GMRA TRILOGY 0226
 GMRA INDIGO 615
 BIEBER ROLLIN DEEP Y118
 BIEBER ENCHANTRESS 166Y

This heifer is the kind that stops you in your tracks—sharp featured, bold in her rib shape, and built with the structural correctness that turns a heifer into a long-term investment. Sired by MLK Big Foot, she inherits his signature combination of power and athletic build. Big Foot progeny are gaining a reputation for added body, width, and a confident, show-ring presence, and this February female follows that mold to a tee. Her dam, Free Enchantress 6E, brings maternal quality and real-world practicality to the equation. That influence shows through in her softness, her easy-doing look, and the brood-cow future written all over her. She's an open heifer with the mass, balance, and composure to be competitive, yet she reads even stronger as a future donor-quality female. One of the most complete profiles in the offering.



FREE MIMI 25125 ET

RED ANGUS | RAA: 5170067 | DOB: 01.25.2025 | TATTOO: 25125

CED	BW	WW	YW	MILK	ME	HPG	CEM	STAY	MARB	YG	CW	REA	FAT	PROS	HB	GM
13	-1	62	94	25	6	11	6	15	0.1	-0.03	10	0.06	-0.01	57	44	13

MANN RED BOX 55C
DUFF HD 2046
DUFF CITA 4060 15522

RED FINE LINE MULBERRY 26P
DAMAR MIMI W085
DFRA TARMILY N512

SLGN WIDELOAD 920W
PELTON MISS AJA 0839U
DUFF NAPOLEON 232
GT CITA 4060
RED COMPASS MULBERRY 449M
RED DUS FAYETTE 8G
BIEBER MAKE MIMI 7249
DFRA TARMILY N305

This is a January-born female that brings together two powerful and time-tested lines of Red Angus genetics. Sired by Duff HD, she carries his signature look—bold in her body shape, correct in her structure, and built with the kind of natural presence that instantly draws your eye. HD daughters are known for their stoutness, easy disposition, and the kind of maternal quality that lasts, and this early-born heifer is a shining example. Her dam, Damar Mimi W085, adds another layer of femininity, balance, and production reliability. Mini has earned her way in the Damar program by consistently generating structurally sound, attractive daughters with longevity and udder quality—and those traits are clearly on display here. She's the kind that blends show-ring look with real-world practicality—an open heifer you can build around with confidence.



DAM, ROJAS AMAL 6061



FREE AMAL 6061 2563 ET

RED ANGUS | RAA: 5170035 | DOB: 03.27.2025 | TATTOO: 2563

CED	BW	WW	YW	MILK	ME	HPG	CEM	STAY	MARB	YG	CW	REA	FAT	PROS	HB	GM
12	0.3	69	101	26	-3	10	5	13	0.15	-0.04	7	0.01	-0.01	55	42	12

MANN RED BOX 55C
DUFF HD 2046
DUFF CITA 4060 15522

PZC TMAS FIRESTORM 1800 ET
ROJAS AMAL 6061
SIX MILE LAKOTA 112Y

SLGN WIDELOAD 920W
PELTON MISS AJA 0839U
DUFF NAPOLEON 232
GT CITA 4060
RED SIX MILE SAKIC 832S
GT CITA 4060
VGW GAME PLAN 816
SIX MILE LAKOTO 16W

Here's one that checks every box for balance, style, and future production value. This March open heifer is sired by Duff HD, a bull widely admired for stamping daughters with body, muscle shape, and that unmistakable Duff presence. On the bottom side, she's backed by Rojas Amal 6061, a female line celebrated for its structural integrity, femininity, and perfect udder design. This female puts all of that together in one eye-appealing package—clean fronted, bold in her rib design, level in her lines, and built on a square, correct foundation. She has the look and elegance to show and the kind of maternal pedigree that matures into a herd-building cow. A stand-out in person and the kind you can confidently build around.



FREE SURPRISE 24119

RED ANGUS | RAA: 5156691 | DOB: 02.14.2024 | TATTOO: 24119

SIX MILE JOHN WICK 882E
SIX MILE PRIVATE STOCK 32H
RED SIX MILE MS FRADO 32F

MF FUSION 8637
FREE 21-119
BIEBER SUPRISE 558C

RED U-2 RECKONING 149A
RED SIX MILE & CO GLORIA 29A
WEBER REFORM 618
RED BAR-E-L FRADO 133B
PIE FUSION 576
MF MARILYN 6327
BIEBER H HUGHES W109
BIEBER SUPRISE 316W

CED	13	HPG	11	REA	0.18
BW	-2	CEM	10	FAT	0.02
WW	69	STAY	16	PROS	-
YW	105	MARB	0.28	HB	73
MILK	24	YG	0.07	GM	-
ME	-1	CW	26		

A.I.'d 4/10/25 to Bieber CL Energize F121. P.E.'d to FREE Red Look 2370.

An attractive, well-designed Six Mile Private Stock daughter who brings balance, structure, and maternal promise together in a highly functional package. She's extended through her front end, smooth in her lines, and stands on a correct, flexible foundation—traits that have made Private Stock females so versatile in production settings. Her dam, Free 21-119, adds a dependable dose of fertility, udder quality, and longevity, all of which surface in this heifer's rib shape and natural brood-cow presence. Sound, practical, and built for years of real-world value, she is a no-nonsense bred female that will fit seamlessly into a variety of breeding programs. A complete, easy-keeping cow prospect with long-term productivity ahead.



FREE CITA 4060 23-7

RED ANGUS | RAA: 5000785 | DOB: 09.08.2023 | TATTOO: 23-7

DUFF CORNERSTONE 16136
DUFF RED WOOD 1941
DUFF DIXIE ERICA 144 1532

RED BLAIRS BINGO 581B
DUFF CITA 4060 16144
GT CITA 4060

RED BLAIRS BINGO 581B
DUFF JUANADA 927K 246
WCR HAMMELECH 812Z
DUFF BL 505 DIXIEERICA 144
RED RINGSTEAD KARGO 215U
WSF MS YANKEE 13T 12W
CITATION 138
JMDF MISS LANA

CED	12	HPG	12	REA	0
BW	-0.6	CEM	5	FAT	0
WW	58	STAY	17	PROS	74
YW	89	MARB	0.12	HB	66
MILK	23	YG	-0.01	GM	8
ME	-6	CW	6		



DAM, DUFF CITA 4060 16144

A.I.'d 4/10/25 to DUFF Cinch 23270. P.E.'d to FREE Red Look 2370.

This female is a beautifully made Duff Red Wood daughter who combines femininity, structural integrity, and real-world practicality in one complete package. She's extended up front, smooth through her shoulder, and deep in her center—classic traits of the Red Wood line. Her dam, Duff Cita 4060 16144, is a proven producer known for fertility, udder quality, and longevity, and that influence is evident in this heifer's softness, balance, and natural brood-cow presence. Sound, functional, and bred to work, she is the kind of bred female that will mature into a long-lasting, dependable cow with years of production ahead.



FREE MARIA 23025

RED ANGUS | RAA: 5149551 | DOB: 09.25.2023 | TATTOO: 23025

DUFF CORNERSTONE 16136
DUFF RED WOOD 1941
 DUFF DIXIE ERICA 144 1532

BECKTON EPIC R397 K
FREE MARIA 56E
 THIS 247L OF 47L NORSEMAN

RED BLAIRS BINGO 581B
 DUFF JUANADA 927K 246
 WCR HAMMELECH 812Z
 DUFF BL 505 DIXIEERICA 144
 BECKTON EPIC K F075
 BECKTON KIT F468 JL
 5L NORSEMAN KING 2291
 CH 4912 TULIP 47L

CED	7	HPG	14	REA	0.17
BW	1.4	CEM	4	FAT	0.03
WW	66	STAY	14	PROS	83
YW	102	MARB	0.34	HB	48
MILK	19	YG	0.06	GM	35
ME	-4	CW	15		



SERVICE SIRE, DUFF CINCH 23270

A.I.'d 4/10/25 to DUFF Cinch 23270. P.E.'d to FREE Red Look 2370.

Here is a powerful yet feminine Duff Red Wood daughter that checks all the boxes for balance, structure, and long-term production value. She is bold in her rib shape, level in her design, and stands on a solid, correct foundation—hallmarks of the Red Wood lineage. Her dam, Free Maria 56E, brings maternal depth and longevity to the equation, reflected in this heifer's softness, functionality, and brood-cow look. She's the kind of bred female that fits seamlessly into a variety of breeding philosophies—easy to appreciate, easy to mate, and built to stay in the herd. A complete, dependable breeding piece with years of value ahead.



FREE LUCY 23042

RED ANGUS | RAA: 5149555 | DOB: 10.03.2023 | TATTOO: 23042

DUFF CORNERSTONE 16136
DUFF RED WOOD 1941
DUFF DIXIE ERICA 144 1532

PIE THE COWBOY KIND 343
FREE LUCY 11D
4MC LUCY 4162

RED BLAIRS BINGO 581B
DUFF JUANADA 927K 246
WCR HAMMELECH 812Z
DUFF BL 505 DIXIEERICA 144
BUF CRK THE RIGHT KIND U199
PIE CASCADE 561
4MC RED BULL 2100
4MC LUCY

CED	9	HPG	10	REA	-0.13
BW	0.3	CEM	5	FAT	0.02
WW	57	STAY	16	PROS	87
YW	89	MARB	0.41	HB	50
MILK	19	YG	0.13	GM	37
ME	-1	CW	15		

A.I.'d 4/10/25 to DUFF Cinch 23270. P.E.'d to FREE Red Look 2370.

A standout Duff Red Wood daughter, she is bold in her design yet still reads with plenty of femininity and maternal promise. She's deep-bodied, square in her build, and moves with the flexibility and confidence Red Wood daughters are known for. Her dam, Free Lucy 11D, has long been appreciated for producing structurally correct, easy-fleshing females, and that influence shows clearly in this heifer's softness and brood-cow character. This female is the kind of bred female that settles in and works—functional, well-balanced, and built for years of productivity. A no-nonsense, dependable breeding piece for any forward-thinking program.

18

FREE ROSE 24089 ET

RED ANGUS | RAA: 5156679 | DOB: 04.10.2024 | TATTOO: 24089

DUFF CORNERSTONE 16136
DUFF RED WOOD 1941
 DUFF DIXIE ERICA 144 1532

BIEBER ROLLIN DEEP Y118
BIEBER ROSE 475A
 BASIN ROSE 710P

RED BLAIRS BINGO 581B
 DUFF JUANADA 927K 246
 WCR HAMMELECH 812Z
 DUFF BL 505 DIXIEERICA 144
 BIEBER ROOSEVELT W384
 BIEBER TILLY 399W
 C A FUTURE DIRECTION 5321
 BASIN ROSE F521

CED	BW	WW	YW	MILK	ME	HPG	CEM	STAY	MARB	YG	CW	REA	FAT	PROS	HB	GM
10	-0.5	60	87	25	-6	9	7	18	0.65	0.08	17	0.2	0.05	129	77	52



A.I.'d 4/10/25 to Bieber CL Energize F121. P.E.'d to FREE Red Look 2370.

A feminine, well-built daughter of Duff Red Wood, expressing the structural correctness and attractive pattern that have made Red Wood females dependable producers. She's long-spined, smooth in her shoulder, and clean through her front end while still carrying the depth and width needed for longevity. Her dam, Bieber Rose 475A, adds a strong dose of maternal quality, fertility, and efficiency – traits reflected in this heifer's rib shape and quiet, brood-cow disposition. Practical, sound, and bred for long-term value, 24089 is the kind of bred heifer that will settle in quickly and contribute years of consistent production. A complete, no-nonsense cow prospect backed by proven genetics.

19

FREE 2481

RED ANGUS | RAA: 5001333 | DOB: 04.13.2024 | TATTOO: 2481

DUFF CORNERSTONE 16136
DUFF RED WOOD 1941
 DUFF DIXIE ERICA 144 1532

PZCTMAS FIRESTORM 1800 ET
ROJAS AMAL 6061
 SIX MILE LAKOTA 112Y

RED BLAIRS BINGO 581B
 DUFF JUANADA 927K 246
 WCR HAMMELECH 812Z
 DUFF BL 505 DIXIEERICA 144
 RED SIX MILE SAKIC 832S
 GT CITA 4060
 VGW GAME PLAN 816
 SIX MILE LAKOTO 16W

CED	BW	WW	YW	MILK	ME	HPG	CEM	STAY	MARB	YG	CW	REA	FAT	PROS	HB	GM
9	0.1	64	97	22	-8	11	4	12	0.27	-0.03	10	0.09	0	71	41	30

A.I.'d 4/10/25 to Dahlke Outcome 016H. P.E.'d to FREE Red Look 2370.

This female is a stylish and well-balanced daughter of Duff Redwood 1941, showing the structural integrity, femininity, and depth that have made Redwood females increasingly sought after. She's extended through her front end, smooth in her shoulder, and correct in her stride—an easy heifer to appreciate from every angle. Her dam, the proven Rojas Amal 6061, adds maternal strength, udder quality, and longevity, traits that come through in this female's softness, center dimension, and brood-cow look. Functional, attractive, and bred for long-term productivity, 24081 is the kind of heifer that will transition into a reliable, no-nonsense cow with years of value ahead.

20

035 REDWOOD

RED ANGUS | RAA: 5019857 | DOB: 01.20.2024 | TATTOO: 35

DUFF CORNERSTONE 16136
DUFF RED WOOD 1941
 DUFF DIXIE ERICA 144 1532

DUFF AMIGO 815
DUFF AMIGO 927K
 O C C JUANADA 927K

RED BLAIRS BINGO 581B
 DUFF JUANADA 927K 246
 WCR HAMMELECH 812Z
 DUFF BL 505 DIXIEERICA 144
 DUFF NEW EDITION 6108
 DCC NL 652K MERLE 443
 O C C EMBLAZON 854E
 O C C JUANADA 624G

CED	BW	WW	YW	MILK	ME	HPG	CEM	STAY	MARB	YG	CW	REA	FAT	PROS	HB	GM
13	-0.4	63	98	19	-9	10	4	17	0.25	0.06	24	0.28	0.03	95	58	37



A.I.'d 4/10/25 to DUFF Cinch 23270. P.E.'d to FREE Red Look 2370.

A stylish and well-built daughter of Duff Red Wood 1941, showing the trademark depth, balance, and structural correctness that have made Red Wood females so reliable in production. She offers a smooth, extended front end, a level, feminine design, and the kind of easy movement that speaks to her long-term durability. Her dam, Duff Amigo 927K, adds an extra punch of maternal merit and a strong, functional cow-family base. That influence shows in this heifer's rib shape, softness, and natural brood-cow presence. Practical, sound, and designed to last, the kind of bred female that matures into a consistent, hardworking cow.



FREE MELLSSIE 23063

RED ANGUS | RAA: 5149557 | DOB: 10.15.2023 | TATTOO: 23063

MANN RED BOX 55C
DUFF RED LOOK 1974
 DUFF SKY 1A 1637

ANDRAS FUSION R236
BIEBER MELLSSIE 386C
 BIEBER MELLSSIE 230Z

SLGN WIDELOAD 920W
 PELTON MISS AJA 0839U
 RED BLAIRS BINGO 581B
 RED CC MISS SKY 1A
 ANDRAS IN FOCUS B175
 ANDRAS BELLE B167
 LCOC HIGH NOON A093R
 BIEBER MELLSSIE 162T

CED	13	HPG	13	REA	-0.12
BW	-1.7	CEM	8	FAT	0.01
WW	63	STAY	14	PROS	108
YW	104	MARB	0.61	HB	52
MILK	20	YG	0.09	GM	56
ME	6	CW	16		



SIRE, DUFF RED LOOK 1974

A.I.'d 4/10/25 to DUFF Cinch 23270. P.E.'d to FREE Red Look 2370.

This Duff Red Look daughter is the kind that reads with balance, femininity, and long-term production value. She's long-spined, smooth through her shoulder, and has that attractive, refined front end that makes Red Look females so versatile. Her dam, Bieber Mellssie 386C, adds the proven maternal strength and durability that have made this cow family highly reliable in real-world conditions. She is practical in her build, correct on her feet and legs, and carries the kind of brood-cow presence that only improves with maturity. A dependable, well-made bred heifer with years of consistency and return on investment ahead.



FREE EXPECTATION 23032

RED ANGUS | RAA: 5149553 | DOB: 10.12.2023 | TATTOO: 23032

MANN RED BOX 55C
DUFF RED LOOK 1974
 DUFF SKY 1A 1637

ROJAS RIOJA 6052
FREE EXPECTATION 81-F
 BIEBER EXPECTATION 384C

SLGN WIDELOAD 920W
 PELTON MISS AJA 0839U
 RED BLAIRS BINGO 581B
 RED CC MISS SKY 1A
 PZC TMAS FIRESTORM 1800 ET
 SIX MILE LAKOTA 112Y
 BIEBER RUMOR HAS IT A554
 BIEBER EXPECTATION Z475

CED	13	HPG	12	REA	-0.11
BW	-1.4	CEM	7	FAT	0
WW	62	STAY	16	PROS	85
YW	94	MARB	0.33	HB	66
MILK	26	YG	0.03	GM	19
ME	-2	CW	4		



SERVICE SIRE, DUFF CINCH 23270

A.I.'d 4/10/25 to Bieber CL Energize F121. P.E.'d to FREE Red Look 2370.

This Duff Red Look daughter stands out for her balance, femininity, and overall correctness. She's clean-fronted, long-bodied, and exceptionally smooth in her design—traits that have made Red Look daughters so dependable in production settings. Her dam, Free Expectation 81-F, adds an extra layer of maternal quality and functionality, which comes through in 23032's rib shape, structure, and easy-keeping appearance. She's the type of bred heifer that reads trouble-free and versatile—quiet disposition, sound build, and the kind of brood-cow presence that only improves with age. A practical yet stylish female with years of productive value ahead.

23

FREE TULIP 23023

RED ANGUS | RAA: 5149549 | DOB: 12.02.2023 | TATTOO: 23023

MANN RED BOX 55C
DUFF RED LOOK 1974
 DUFF SKY 1A 1637

BECKTON EPIC R397 K
FREE TULIP 85E
 THIS Z47L OF 47L NORSEMAN

SLGN WIDELOAD 920W
 PELTON MISS AJA 0839U
 RED BLAIRS BINGO 581B
 RED CC MISS SKY 1A
 BECKTON EPIC K F075
 BECKTON KIT F468 JL
 5L NORSEMAN KING 2291
 CH 4912 TULIP 47L

CED	BW	WW	YW	MILK	ME	HPG	CEM	STAY	MARB	YG	CW	REA	FAT	PROS	HB	GM
10	-0.7	71	116	24	4	14	4	14	0.33	-0.01	18	0.18	0	87	45	43



A.I.'d 4/10/25 to DUFF Cinch 23270. P.E.'d to FREE Red Look 2370.

A beautifully made Duff Red Look daughter, 23023 is the kind that blends eye appeal with real-world function. She's smooth through her front end, long-spined, and carries the balanced, maternal design Red Look is known for. Her dam, Free Tulip 85E, consistently stamps daughters with fertility, udder quality, and structural correctness—traits that show clearly in this heifer's softness and clean, feminine build. This female offers the kind of quiet consistency and longevity buyers appreciate—easy to manage, easy to mate, and built to last. A bred heifer with brood-cow potential written all over her.

24

FREE SURPRISE 23114

RED ANGUS | RAA: 51495065 | DOB: 11.04.2023 | TATTOO: 23114

MANN RED BOX 55C
DUFF RED LOOK 1974
 DUFF SKY 1A 1637

MF FUSION 8637
FREE 21-114
 BIEBER SUPRISE 558C

SLGN WIDELOAD 920W
 PELTON MISS AJA 0839U
 RED BLAIRS BINGO 581B
 RED CC MISS SKY 1A
 PIE FUSION 576
 MF MARILYN 6327
 BIEBER H HUGHES W109
 BIEBER SUPRISE 316W

CED	BW	WW	YW	MILK	ME	HPG	CEM	STAY	MARB	YG	CW	REA	FAT	PROS	HB	GM
13	-2.4	66	103	24	3	11	8	14	0.38	0.06	18	0	0.01	91	52	39



A.I.'d 4/10/25 to DUFF Cinch 23270. P.E.'d to FREE Red Look 2370.

Here is a smooth-made, attractive Duff Red Look daughter with the kind of structural correctness and femininity that make Red Look females so dependable. She's elegant in her front third, level along her top, and reads with a functional, easy-keeping design. Her dam, Free 21-114, contributes longevity, maternal consistency, and a no-nonsense production record—traits reflected in this heifer's softness and brood-cow demeanor. Sound, practical, and built to thrive in a variety of environments, 23114 is the kind of bred female that settles in quickly and works for years. A complete, well-designed heifer with long-term value written into her pedigree.

25

FREE AMAL 6061 24049 ET

RED ANGUS | RAA: 5156673 | DOB: 03.03.2024 | TATTOO: 24049

MANN RED BOX 55C
DUFF RED LOOK 1974
 DUFF SKY 1A 1637

PZC TMAS FIRESTORM 1800 ET
ROJAS AMAL 6061
 SIX MILE LAKOTA 112Y

SLGN WIDELOAD 920W
 PELTON MISS AJA 0839U
 RED BLAIRS BINGO 581B
 RED CC MISS SKY 1A
 RED SIX MILE SAKIC 832S
 GT CITA 4060
 VGW GAME PLAN 816
 SIX MILE LAKOTO 16W

CED	BW	WW	YW	MILK	ME	HPG	CEM	STAY	MARB	YG	CW	REA	FAT	PROS	HB	GM
11	-1	64	95	25	-3	12	6	13	0.32	0.01	6	-0.09	0	71	47	24



A.I.'d 4/10/25 to Dahlke Outcome 016H. P.E.'d to FREE Red Look 2370.

A feminine, well-designed Duff Red Look daughter who brings balance, structure, and maternal predictability together in one package. She's extended through her front end, smooth over her top, and stands on a correct, flexible skeleton—hallmark traits of the Red Look sire group. Her dam, the influential Rojas Amal 6061, adds depth, udder quality, and longevity, which show through in this heifer's rib shape, softness, and brood-cow presence. Practical, attractive, and built for long-term production, 24049 is the type of bred female that will settle in easily and deliver consistent value year after year. A dependable, versatile cow prospect backed by two highly proven lines.

26

FREE SURPRISE 23076

RED ANGUS | RAA: 5149563 | DOB: 11.03.2023 | TATTOO: 23076

MANN RED BOX 55C
DUFF RED LOOK 1974
 DUFF SKY 1A 1637

KJHT POWER TAKE OFF
FREE SURPRISE POWER 7G
 BIEBER SURPRISE 113C

SLGN WIDELOAD 920W
 PELTON MISS AJA 0839U
 RED BLAIRS BINGO 581B
 RED CC MISS SKY 1A
 RED SOO LINE POWER EYE 161X
 SRA PAINTBUCKET
 ANDRAS FUSION R236
 BIEBER SUPRISE 497A

CED	BW	WW	YW	MILK	ME	HPG	CEM	STAY	MARB	YG	CW	REA	FAT	PROS	HB	GM
14	-2.1	59	94	26	2	10	8	13	0.29	0.03	9	-0.07	0	70	39	31



A.I.'d 4/10/25 to DUFF Cinch 23270. P.E.'d to FREE Red Look 2370.

This Duff Red Look daughter is a feminine, well-balanced heifer with the look of a long-term producer. She's smooth shouldered, extended through her front end, and stands on a correct, flexible skeleton—exactly what you expect from the Red Look lineage. Her dam, Free Surprise Power 7G, contributes depth, maternal strength, and structural integrity, traits that come through clearly in 23076's rib shape and easy-moving design. Practical, attractive, and built for real-world durability, 23076 is the kind of bred heifer that settles in quickly and generates years of consistent value. A complete, functional female with brood-cow potential written all over her.

27

FREE SANDY 24018

RED ANGUS | RAA: 5156659 | DOB: 02.29.2024 | TATTOO: 24018

ROJAS RIOJA 6052
DUFF RED BLOOD 18114
 DUFF JUANADA 927K 15124

WEBR NIGHTTRAIN 324
MF SANDY 6310
 JRA JAMES 4153

PZC TMAS FIRESTORM 1800 ET
 SIX MILE LAKOTA 112Y
 RED CROWFOOT OLE'S OSCAR
 O C C JUANADA 927K
 WEBR DOC HOLLIDAY 2N
 BJF LANA'S EQUAL 8021U
 HI-G 137
 JRA JAMES 3203

CED	BW	WW	YW	MILK	ME	HPG	CEM	STAY	MARB	YG	CW	REA	FAT	PROS	HB	GM
13	-1.8	66	99	23	0	10	6	12	0.43	-0.03	10	0.02	-0.01	60	28	32



A.I.'d 4/10/25 to Bieber CL Energize F121. P.E.'d to FREE Red Look 2370.

This is a powerful yet feminine Duff Red Blood daughter who offers a sharp blend of body, depth, and structural quality. She's bold in her center, correct at the ground, and still reads clean and refined through her front end—traits that consistently make Red Blood females stand out in production settings. Her dam, MF Sandy 6310, contributes maternal strength and longevity, traits that come through clearly in this heifer's softness, balance, and natural brood-cow presence. Functional, complete, and built with long-term value in mind, 24018 is the kind of bred heifer that will adapt quickly and become a hardworking, reliable cow for years to come.

28

FREE EXPECTATION 24030

RED ANGUS | RAA: 5156663 | DOB: 03.08.2024 | TATTOO: 24030

ROJAS RIOJA 6052
DUFF RED BLOOD 18114
 DUFF JUANADA 927K 15124

PIE STOCKMAN 4051
FREE EXPECTATION 1E
 BIEBER EXPECTATION 384C

PZC TMAS FIRESTORM 1800 ET
 SIX MILE LAKOTA 112Y
 RED CROWFOOT OLE'S OSCAR
 O C C JUANADA 927K
 LSF SAGA 1040Y
 PIE LAKOTA 046
 BIEBER RUMOR HAS IT A554
 BIEBER EXPECTATION 2475

CED	BW	WW	YW	MILK	ME	HPG	CEM	STAY	MARB	YG	CW	REA	FAT	PROS	HB	GM
15	-1.5	67	105	30	2	12	8	14	0.55	-0.03	13	0.16	0	99	55	44



A.I.'d 4/10/25 to Bieber CL Energize F121. P.E.'d to FREE Red Look 2370.

This is a deep-bodied, functional Duff Red Blood daughter with the kind of structure and balance that make Red Blood females standout producers. She's bold in her rib shape, wide-based, and still maintains a clean, feminine front end. Her dam, Free Expectation 1E, comes from a cow family known for structural integrity, fertility, and real-world staying power—traits clearly reflected in this heifer's softness, design, and brood-cow demeanor. Practical, level-made, and built for long-term efficiency, 24030 is the type of bred female that will step into a herd and work. A dependable, low-maintenance cow prospect with years of production ahead.



FREE LADY 2X 22181 24F181

RED ANGUS | RAA: 5177653 | DOB: 02.25.2024 | TATTOO: 24F181

ROJAS RIOJA 6052
DUFF RED BLOOD 18114
DUFF JUANADA 927K 15124

DUFF FEARLESS 20123
DUFF LADY 2X 1708 22181
DUFF LADY 2X 1708

PZC TMAS FIRESTORM 1800 ET
SIX MILE LAKOTA 112Y
RED CROWFOOT OLE'S OSCAR
O C C JUANADA 927K
DUFF-JC 4REAL 16250
PELTON MISS AJA 0839U
SIX MILE SIGNATURE 295B
RED STEWART LADY 2X

CED	13	HPG	9	REA	0.22
BW	-1.2	CEM	5	FAT	0
WW	63	STAY	14	PROS	77
YW	95	MARB	0.43	HB	42
MILK	26	YG	-0.06	GM	35
ME	-3	CW	10		

A.I.'d 4/10/25 to Bieber CL Energize F121. P.E.'d to FREE Red Look 2370.

A bold, maternally driven daughter of Duff Red Blood, expressing the power, rib shape, and structural integrity that make this sire group so dependable. She's wide-based, deep-sided, and still reads with a clean, attractive front end—an easy female to appreciate for both her look and practicality. Her dam, Duff Lady 2X 1708 22181, contributes a proven line of fertility, udder quality, and longevity, which shines through in this heifer's softness and natural brood-cow presence. Built for efficiency and long-term production, the type of bred heifer that steps into a pasture and works—consistent, functional, and designed to last.

FREE MADE RIGHT 24095

RED ANGUS | RAA: 5156683 | DOB: 03.30.2024 | TATTOO: 24095

J6 MAXED OUT 121G

DUFF MAX 121G 21163

RED U-2 MISTY 295X

RED NORTHLINE FATTONY 605U

FREE MADE RIGHT 1815

BROWN MS MADE RIGHT T7641

WEBR MAXED OUT 627

J6 TEMPEST B300

RED U-2 WILD THING 8235U

RED U-2 MISTY 8085U

RED SVR GANGSTER 14S

RED NORTHLINE RUBY 0305N

RABR MADE RIGHT H6001

BROWN MS BIG VACATION P6843

CED	BW	WW	YW	MILK	ME	HPG	CEM	STAY	MARB	YG	CW	REA	FAT	PROS	HB	GM
8	2.2	74	120	23	8	13	6	16	0.21	0.03	30	0.31	0.02	97	56	42

A.I.'d 4/10/25 to Bieber CL Energize F121. P.E.'d to FREE Red Look 2370.

A bold-bodied, attractive daughter of Duff Max, carrying his signature power, depth, and structural correctness. She's wide-based, soft-centered, and still maintains a clean, feminine look through her front end—an easy female to appreciate from every angle. Her dam, Free Made Right 1815, contributes strong maternal instinct, udder quality, and longevity, traits reflected in this heifer's balance, rib shape, and brood-cow presence. Practical, stout, and built for long-term productivity, a cow prospect that will settle in quickly and generate years of consistent return. A reliable, complete breeding piece backed by proven maternal genetics.

FREE ENCHANTRESS 24101

RED ANGUS | RAA: 5156685 | DOB: 03.28.2024 | TATTOO: 24101

J6 MAXED OUT 121G

DUFF MAX 121G 21163

RED U-2 MISTY 295X

MF FUSION 8637

FREE ENCHANTRESS 6J

BIEBER ENCHANTRESS 217B

WEBR MAXED OUT 627

J6 TEMPEST B300

RED U-2 WILD THING 8235U

RED U-2 MISTY 8085U

PIE FUSION 576

MF MARILYN 6327

BIEBER ROLLIN DEEP Y118

BIEBER ENCHANTRESS 166Y

CED	BW	WW	YW	MILK	ME	HPG	CEM	STAY	MARB	YG	CW	REA	FAT	PROS	HB	GM
9	0.8	69	113	22	7	13	5	17	0.32	0.07	24	0.17	0.02	105	61	45

A.I.'d 4/10/25 to Bieber CL Energize F121. P.E.'d to FREE Red Look 2370.

This female is a well-balanced, eye-catching Duff Max daughter who combines body, dimension, and femininity in an easy-to-appreciate package. She's bold through her center, correct at the ground, and still maintains a clean, extended front end—a combination that makes Max females stand out in both the pasture and the pen. Her dam, Free Enchantress 6J, contributes maternal strength, fertility, and structural consistency, all of which show clearly in this heifer's softness and brood-cow character. Functional, complete, and bred with long-term productivity in mind, she is the kind of heifer that transitions seamlessly into a dependable, hard-working cow. A practical, well-made female with years of value ahead.

FREE PRIMROSE 24072

RED ANGUS | RAA: 5156677 | DOB: 02.27.2024 | TATTOO: 24072

COLEMAN CHARLO 0256

BLAIR'S MARTIAL LAW 593E

BAR-E-L ERICA 74A

BOW CRK HEAVILY ARMED 310A

BIEBER PRIMROSE 411G

BIEBER PRIMROSE 450D

O C C PAXTON 730P

BOHI ABIGALE 6014

BAR-E-L NATURAL LAW 52Y

HF ERICA 339T

BUF CRK THE RIGHT KIND U199

TWIN PONDS HI-RB-LS 408

BECKTON EPIC R397 K

BIEBER PRIMROSE 480A

CED	BW	WW	YW	MILK	ME	HPG	CEM	STAY	MARB	YG	CW	REA	FAT	PROS	HB	GM
12	-1.3	68	106	31	-4	7	6	10	0.39	0.17	22	-0.06	0.04	62	15	46

A.I.'d 4/10/25 to Bieber CL Energize F121. P.E.'d to FREE Red Look 2370.

A well-balanced, eye-appealing daughter of Blairs Martial Law, a sire known for adding length, structure, and a clean, attractive design to his progeny. This February female follows that pattern closely—extended up front, level down her top, and sound at the ground. Her dam, Bieber Rose 416G, contributes strong maternal instincts, fertility, and real-world efficiency, traits evident in 24072's softness, rib shape, and brood-cow demeanor. She's the kind of bred heifer that reads practical and problem-free—easy to develop, easy to manage, and built to hold up for years. A complete, dependable female with long-term production value.

33

FREE MISS WIDELOAD 24093

RED ANGUS | RAA: 5156681 | DOB: 02.27.2024 | TATTOO: 24093

COLEMAN CHARLO 0256
BLAIR'S MARTIAL LAW 593E
BAR-E-L ERICA 74A

PELTON WIDELOAD 78B
FREE MISS WIDELOAD 27H
FREE MISS POWER 82-F

O C C PAXTON 730P
BOHI ABIGALE 6014
BAR-E-L NATURAL LAW 52Y
HF ERICA 339T
SLGN WIDELOAD 920W
PELTON MISS JAYLA 0508S
RED SOO LINE POWER EYE 161X
RED MRLA MISS 5390C

CED	BW	WW	YW	MILK	ME	HPG	CEM	STAY	MARB	YG	CW	REA	FAT	PROS	HB	GM
13	-2.6	64	104	33	0	4	4	10	0.58	0.16	28	0.08	0.04	-	-1	-

A.I.'d 4/10/25 to Bieber CL Energize F121. P.E.'d to FREE Red Look 2370.

Heifer 24093 is a smooth-made, attractive daughter of Blairs Martial Law, carrying his trademark length, correctness, and feminine design. She's clean-fronted, level in her build, and stands on a sound, functional foundation—exactly what you expect from the Martial Law line. Her dam, Free Miss Wideload 27H, adds depth, fertility, and maternal consistency, traits that surface clearly in this heifer's softness and brood-cow presence. Balanced, practical, and built to last, 24093 is a no-nonsense bred female designed for long-term productivity. A dependable, easy-keeping cow prospect ready to work in any program.

34

FREE ELINE 24019

RED ANGUS | RAA: 5156661 | DOB: 03.18.2024 | TATTOO: 24019

RED U2 NOVA 627F
RED U2Q CABO 442J
RED U-2 ANEXA 439A

WEBR NIGHTTRAIN 324
MF ELINE 6333
ALMS A35

RED YCLC COPENHAGEN 653C
RED U-2 LADY 368C
RED MINBURN COPENHAGEN 3Y
RED U-2 ANEXA 443Y
WEBR DOC HOLLIDAY 2N
BJF LANA'S EQUAL 8021U
ALMS 355X
ALMS 35U

CED	BW	WW	YW	MILK	ME	HPG	CEM	STAY	MARB	YG	CW	REA	FAT	PROS	HB	GM
5	2.7	69	108	24	7	10	4	12	0.31	-0.06	9	0.02	-0.02	41	17	25

A.I.'d 4/10/25 to Bieber CL Energize F121. P.E.'d to FREE Red Look 2370.

Here is an attractive, well-balanced daughter of Cabo, a sire known for stamping cattle with structural correctness and extra look. This March female is smooth-made and feminine up front, yet still carries plenty of shape and dimension through her center. Her dam, MF Eline 6333, adds proven maternal substance and longevity, which shows in 24019's softness, rib design, and practical build. She's the kind of bred heifer that reads trouble-free and versatile—sound at the ground, balanced from every angle, and built to mature into a highly functional, long-lasting brood cow. A dependable, easy-keeping female with years of production ahead.

35

FREE CANDYLAND 24046

RED ANGUS | RAA: 5156667 | DOB: 03.01.2024 | TATTOO: 24046

RED U2 NOVA 627F
RED U2Q CABO 442J
RED U-2 ANEXA 439A

RED BLAIRS BINGO 581B
FREE CANDYLAND 1G
BIEBER EXPECTATION 384C

RED YCLC COPENHAGEN 653C
RED U-2 LADY 368C
RED MINBURN COPENHAGEN 3Y
RED U-2 ANEXA 443Y
RED RINGSTEAD KARGO 215U
WSF MS YANKEE 13T 12W
BIEBER RUMOR HAS IT A554
BIEBER EXPECTATION 2475

CED	BW	WW	YW	MILK	ME	HPG	CEM	STAY	MARB	YG	CW	REA	FAT	PROS	HB	GM
10	1.2	67	102	21	0	012	7	14	0.25	-0.03	21	0.18	-0.01	80	49	30

A.I.'d 4/10/25 to Bieber CL Energize F121. P.E.'d to FREE Red Look 2370.

This heifer is a stylish, well-balanced daughter of Cabo, displaying the smooth structure and attractive look that continue to make his females stand out. She's extended through her front end, level in her design, and offers ample body shape without sacrificing femininity. Her dam, Free Candyland 1G, contributes reliable maternal strength and a proven record of producing functional, easy-doing females. Practical, correct, and bred for longevity, 24046 is the kind of female that fits seamlessly into a wide range of breeding programs. She reads as a trouble-free, efficient brood-cow prospect with long-term production written all over her.

PG 25

36

FREE ELINE 24050

RED ANGUS | RAA: 5156675 | DOB: 02.27.2024 | TATTOO: 24050

RED U2 NOVA 627F
RED U2Q CABO 442J
 RED U-2 ANEXA 439A

DUBAS EXCELLENT ANSWER
FREE ELINE 19G
 MF ELINE 6333

RED YCLC COPENHAGEN 653C
 RED U-2 LADY 368C
 RED MINBURN COPENHAGEN 3Y
 RED U-2 ANEXA 443Y
 BROWN P707 X7877
 LCS 012
 WEBR NIGHTTRAIN 324
 ALMS A35



CED	BW	WW	YW	MILK	ME	HPG	CEM	STAY	MARB	YG	CW	REA	FAT	PROS	HB	GM
8	0.9	77	119	27	10	11	6	14	0.24	0.03	27	0.13	0	76	43	34

A.I.'d 4/10/25 to Bieber CL Energize F121. P.E.'d to FREE Red Look 2370.

Here is a clean-fronted, attractive Cabo daughter that blends femininity with practical, real-world design. She's long-bodied, smooth through her shoulder, and stands on a correct, easy-moving foundation—traits that make Cabo females so dependable. Her dam, Free Eline 19G, stems from a proven maternal line known for fertility, udder quality, and longevity, and those strengths show clearly in 24050's rib shape and brood-cow disposition. Balanced, functional, and built for long-term value, 24050 is the kind of bred heifer that fits seamlessly into a wide range of breeding programs. A reliable, versatile cow prospect with years of production ahead.

37

FREE SURPRISE 23007

RED ANGUS | RAA: 5149547 | DOB: 09.24.2023 | TATTOO: 23007

RED SOO LINE POWER EYE 161X
KJHT POWER TAKE OFF
 SRA PAINTBUCKET

ANDRAS FUSION R236
BIEBER SURPRISE 113C
 BIEBER SUPRISE 497A

RED COCKBURN RIBEYE 308U
 RED TR LYNN 301R
 RED NORTHLINE FATTONY 605U
 SRA PICABO PROMISE
 ANDRAS IN FOCUS B175
 ANDRAS BELLE B167
 BECKTON EPIC R397 K
 BIEBER SUPRISE 262U

CED	BW	WW	YW	MILK	ME	HPG	CEM	STAY	MARB	YG	CW	REA	FAT	PROS	HB	GM
16	-1.2	52	86	26	5	9	10	12	-0.17	0	14	-0.05	-0.02	61	30	32

A.I.'d 4/10/25 to DUFF Cinch 23270. P.E.'d to FREE Red Look 2370.

This PTO daughter is the kind that's hard to fault—deep-bodied, square-hipped, and attractive from every angle. She combines the muscle expression and structural integrity PTO is known for with the maternal strength of Bieber Surprise 113C, a cow family recognized for fertility, longevity, and real-world production value. She has the look of a problem-free, long-term producer with the added balance to work in any environment. Practical in her build, feminine through her front end, and carrying the kind of brood-cow presence that only gets better with age, she's a bred heifer designed for consistency and longevity.

38

FREE DAKEL 23073

RED ANGUS | RAA: 5149561 | DOB: 09.27.2023 | TATTOO: 23073

DUFF HONCHO 426
DUFF BLACK INK 1710
 RED STEWART LADY 2X

MF VALOR 5502
FREE BASIN DAKEL 2G
 BASIN DAKEL W154

BAR WICK EUREKA 943 310
 DUFF BI 619 LADYPOP 1017
 RED SCNJ MASTER 14U
 RED STEWART LADY J 714T
 HMF VALOR 7326
 MF ROXANNE 3502
 BASIN EXT 6359
 BASIN DAKEL 3009

CED	BW	WW	YW	MILK	ME	HPG	CEM	STAY	MARB	YG	CW	REA	FAT	PROS	HB	GM
8	1	62	100	23	6	9	3	17	0.3	-0.04	22	0.27	0	86	38	48

A.I.'d 4/10/25 to DUFF Cinch 23270. P.E.'d to FREE Red Look 2370.

Here is a sleek, feminine Duff Black Ink daughter with the kind of structure and balance that make her easy to appreciate. She's clean through her front end, level over her top, and carries a bold yet elegant rib shape. The Black Ink influence shows in her depth, foot quality, and the natural dimension she carries without sacrificing refinement. Her dam, Free Basin Dakel 2G, stems from a proven cow family known for fertility, udder quality, and longevity—traits that are reflected in this heifer's softness, correctness, and brood-cow design. Practical, attractive, and built to last, 23073 is the type of bred female that earns her keep year after year.



39

FREE 2401

RED ANGUS | RAA: 5001335 | DOB: 03.29.2024 | TATTOO: 2401

CED	BW	WW	YW	MILK	ME	HPG	CEM	STAY	MARB	YG	CW	REA	FAT	PROS	HB	GM
11	1	64	97	24	-4	11	4	10	0.35	-0.01	12	0.05	0	57	22	35

MANN RED BOX 55C
DUFF CROSSROADS 20136
 DUFF GEORGINA 9541 201

PZC TMAS FIRESTORM 1800 ET
ROJAS AMAL 6061
 SIX MILE LAKOTA 112Y

SLGN WIDELOAD 920W
 PELTON MISS AJA 0839U
 DUFF LINEBRED 904
 DUFF GEORGINA 4115 9541
 RED SIX MILE SAKIC 832S
 GT CITA 4060
 VGW GAME PLAN 816
 SIX MILE LAKOTO 16W

A.I.'d 4/10/25 to DUFF Cinch 23270. P.E.'d to FREE Red Look 2370.

This heifer is a feminine, well-structured daughter of Duff Crossroads 20136, carrying his trademark look of balance, extension, and structural quality. She's long-fronted, smooth through her shoulder, and correct at the ground, giving her the kind of refined silhouette that stands out in a bred-heifer pen. Her dam, the highly influential Rojas Amal 6061, contributes proven maternal value, udder quality, and longevity—traits that surface clearly in this female's rib shape and brood-cow design. Practical, quiet, and built for years of production, she is the sort of bred female that settles in easily and becomes a reliable, low-maintenance cow with long-term value ahead.



40

FREE MISS POWER 24455 ET

RED ANGUS | RAA: 5156697 | DOB: 04.04.2024 | TATTOO: 24455

CED	BW	WW	YW	MILK	ME	HPG	CEM	STAY	MARB	YG	CW	REA	FAT	PROS	HB	GM
12	-0.1	63	98	28	6	10	3	14	0.21	0.04	31	0.2	0	68	25	42

MANN RED BOX 55C
DUFF FAIR WIND 21197
 DUFF CITA 4060 15508

RED SOO LINE POWER EYE 161X
FREE MISS POWER 82-F
 RED MRLA MISS 5390C

SLGN WIDELOAD 920W
 PELTON MISS AJA 0839U
 DUFF E BLAST 8138
 GT CITA 4060
 RED COCKBURN RIBEYE 308U
 RED TR LYNN 301R
 MRLA NEW ERA 87Y
 RED MRLA 793R

A.I.'d 4/10/25 to Bieber CL Energize F121. P.E.'d to FREE Red Look 2370.

A feminine, well-balanced daughter of Duff Fairwind, carrying his signature length, structure, and clean design. She's elegant up front, level over her top, and stands on a correct, easy-moving foundation. Her dam, Free Miss Power 82-F, adds a proven dose of maternal strength and longevity, traits reflected in this heifer's rib shape, softness, and brood-cow character. A practical, complete bred female, she is the kind that will transition seamlessly into a productive, no-nonsense cow with years of value ahead.



41

FREE LAW 32

RED ANGUS | RAA: 5151901 | DOB: 09.18.2024 | TATTOO: 32

CED	BW	WW	YW	MILK	ME	HPG	CEM	STAY	MARB	YG	CW	REA	FAT	PROS	HB	GM
11	-0.1	68	101	24	-5	12	3	14	0.13	0.03	20	0.13	0.01	60	41	19

DUFF NAPOLEON 232
BLAIR'S EXTERNAL LAW
BAR-E-L ERICA 74A

ROJAS RIOJA 6052
FREE EXPECTATION 81-F
BIEBER EXPECTATION 384C

DUFF DISTINCTION 9105
DUFF EUR 443 MERLE 808
BAR-E-L NATURAL LAW 52Y
HF ERICA 339T
PZC TMAS FIRESTORM 1800 ET
SIX MILE LAKOTA 112Y
BIEBER RUMOR HAS IT A554
BIEBER EXPECTATION Z475

A stylish, well-balanced daughter of Blairs External Law, showcasing his ability to sire females with length, structural integrity, and a naturally attractive outline. This mid-September female is especially good in her angles—smooth at the shoulder, level down her top, and correct at the ground. She blends that structural quality with a soft, well-shaped rib and a feminine front end, giving her the foundation of a productive cow. She carries herself with confidence and presence, making her an open heifer with strong future potential.

Retaining the rights to one IVF cycle.



42

FREE 26

RED ANGUS | RAA: 515889 | DOB: 09.22.2024 | TATTOO: 26

CED	BW	WW	YW	MILK	ME	HPG	CEM	STAY	MARB	YG	CW	REA	FAT	PROS	HB	GM
8	1.1	80	126	23	2	14	1	11	0.18	0.06	42	0.34	0.01	71	23	48

DUFF NAPOLEON 232
BLAIR'S EXTERNAL LAW
BAR-E-L ERICA 74A

BECKTON EPIC R397 K
FREE MARIA 70E
THIS Z47L OF 47L NORSEMAN

DUFF DISTINCTION 9105
DUFF EUR 443 MERLE 808
BAR-E-L NATURAL LAW 52Y
HF ERICA 339T
BECKTON EPIC K F075
BECKTON KIT F468 JL
5L NORSEMAN KING 2291
CH 4912 TULIP 47L

A sharp-featured, beautifully balanced daughter of Blairs External Law, a sire known for adding look, extension, and structural integrity to his daughters. This September-born female is long-necked, clean shouldered, and naturally eye-catching, yet still carries the rib shape and substance needed to develop into a productive cow. She's elegant from the side, correct at the ground, and reads with the kind of presence that makes her stand out in a pen.



43

FREE LAW 105

RED ANGUS | RAA: 5151897 | DOB: 09.17.2024 | TATTOO: 105

CED	BW	WW	YW	MILK	ME	HPG	CEM	STAY	MARB	YG	CW	REA	FAT	PROS	HB	GM
11	-0.8	77	119	24	0	11	3	12	0.22	0.03	35	0.32	0.01	75	28	48

DUFF NAPOLEON 232
BLAIR'S EXTERNAL LAW
BAR-E-L ERICA 74A

MF FUSION 8637
FREE BETSY 53J
FREE BETSY 14G

DUFF DISTINCTION 9105
DUFF EUR 443 MERLE 808
BAR-E-L NATURAL LAW 52Y
HF ERICA 339T
PIE FUSION 576
MF MARILYN 6327
FREE UNIFIED2E
MF BETSY 6002

A striking September daughter of Blairs External Law, and she expresses the length, balance, and attractive design that have quickly made his progeny stand out. She's clean through her front end, level down her top, and naturally proportional from every angle—an easy heifer to appreciate on the move or standing still. Her added rib shape and center dimension give her the kind of brood-cow foundation that only improves with maturity. With her combination of style, structural quality, and developing maternal presence, a standout open female with a bright future ahead.

Retaining the rights to one IVF cycle.

44

FREE ELINE LAW 108

RED ANGUS | RAA: 5151903 | DOB: 09.20.2024 | TATTOO: 108

CED	BW	WW	YW	MILK	ME	HPG	CEM	STAY	MARB	YG	CW	REA	FAT	PROS	HB	GM
6	2	75	117	23	0	10	0	11	0.14	0.01	21	0.17	0.01	33	8	25

DUFF NAPOLEON 232
BLAIR'S EXTERNAL LAW
BAR-E-L ERICA 74A

MF POKER FACE 7862
FREE ELINE 19J
MF ELINE 6333

DUFF DISTINCTION 9105
DUFF EUR 443 MERLE 808
BAR-E-L NATURAL LAW 52Y
HF ERICA 339T
WEBR TC CARD SHARK 1015
HMF EDEN'S DELIGHT 8205
WEBR NIGHTTRAIN 324
ALMS A35

This female is a beautifully made daughter of Blairs External Law, combining extension, body shape, and structural correctness in a very complete package. She's long and feminine through her front end, transitions smoothly at the shoulder, and stays level and balanced from nose to tail. Her added depth and flexibility on the move give her the kind of functional appeal that pairs well with her naturally stylish profile. With her blend of design, softness, and quality, an open heifer with plenty of future—as a productive brood cow down the road.



45

FREE LAW 75

RED ANGUS | RAA: 5151909 | DOB: 09.10.2024 | TATTOO: 75

CED	BW	WW	YW	MILK	ME	HPG	CEM	STAY	MARB	YG	CW	REA	FAT	PROS	HB	GM
12	-0.8	65	101	23	-2	9	4	10	0.15	0.07	24	0.13	0.02	43	12	31

DUFF NAPOLEON 232
BLAIR'S EXTERNAL LAW
BAR-E-L ERICA 74A

KJHT POWER TAKE OFF
FREE POWER TAKE OFF 5
BIEBER CONNIE 160W

DUFF DISTINCTION 9105
DUFF EUR 443 MERLE 808
BAR-E-L NATURAL LAW 52Y
HF ERICA 339T
RED SOO LINE POWER EYE 161X
SRA PAINTBUCKET
BASIN TREND SETTER 45S5
BASIN CONNIE 10P5

A sleek, well-patterned daughter of Blairs External Law, carrying his signature blend of extension, balance, and structural integrity. She's long and refined through her front end, transitions smoothly into a level, attractive top line, and stands square and correct at the ground. This September heifer combines that stylish design with plenty of center body, giving her both a feminine silhouette and the depth needed for future productivity. With her flexibility, eye appeal, and developing maternal character, an open female with strong promise.

46

FREE 128

RED ANGUS | RAA: 5151895 | DOB: 09.12.2024 | TATTOO: 128

CED	BW	WW	YW	MILK	ME	HPG	CEM	STAY	MARB	YG	CW	REA	FAT	PROS	HB	GM
15	-3.4	59	87	27	-4	11	7	13	0.47	-0.03	2	-0.02	0	73	47	27

ROJAS RIOJA 6052
DUFF RED BLOOD 18114
DUFF JUANADA 927K 15124

DUFF RED LOOK 1974
FREE EXPECTATION 32 K
FREE EXPECTATION 81-F

PZC TMAS FIRESTORM 1800 ET
SIX MILE LAKOTA 112Y
RED CROWFOOT OLE'S OSCAR
O C C JUANADA 927K
MANN RED BOX 55C
DUFF SKY 1A 1637
ROJAS RIOJA 6052
BIEBER EXPECTATION 384C

An attractive, well-balanced daughter of Red Blood, showcasing the depth, rib shape, and structural quality that have made his females so admired. This September heifer is especially fluid in her movement and offers a refined, extended front end that gives her a naturally eye-catching look. She pairs that femininity with impressive dimension through her center body, setting her up to mature into a productive, long-lasting cow. With her blend of style, softness, and structural integrity, an open female with clear upsides.

47

FREE 24007 CITA

RED ANGUS | RAA: 5151907 | DOB: 09.27.2024 | TATTOO: 24007

ROJAS RIOJA 6052
DUFF RED BLOOD 18114
 DUFF JUANADA 927K 15124

RED BLAIRS BINGO 581B
DUFF CITA 4060 16144
 GT CITA 4060

PZC TMAS FIRESTORM 1800 ET
 SIX MILE LAKOTA 112Y
 RED CROWFOOT OLE'S OSCAR
 O C C JUANADA 927K
 RED RINGSTEAD KARGO 215U
 WSF MS YANKEE 13T 12W
 CITATION 138
 JMDF MISS LANA

CED	BW	WW	YW	MILK	ME	HPG	CEM	STAY	MARB	YG	CW	REA	FAT	PROS	HB	GM
14	-15	70	104	28	-5	11	6	10	0.38	-0.04	8	0.02	-0.01	57	29	28



An attractive, soft-made daughter of Red Blood, and she showcases the depth, flexibility, and brood-cow presence that have made his females so sought after. This late-September heifer is especially good in her rib design—deep through her center, wide at the base, and still maintains a sleek, feminine front end that gives her a refined look. She moves with ease and carries herself with a confidence that sets her apart in a pen. With her combination of body, structure, and developing maternal character, an open female with the ingredients to excel both in production and as a future cornerstone cow.

48

FREE WIND 20

RED ANGUS | RAA: 5151891 | DOB: 09.30.2024 | TATTOO: 20

MANN RED BOX 55C
DUFF FAIR WIND 21197
 DUFF CITA 4060 15508

WFRA MR MISUNDERSTOOD 5060
FLC KATE 75
 FLC KATE 33

SLGN WIDELOAD 920W
 PELTON MISS AJA 0839U
 DUFF E BLAST 8138
 GT CITA 4060
 WFRA 3094
 WFRA RUBY 968
 RED SOO LINE POWER EYE 161X
 PELTONS MISS KATE 0659P

CED	BW	WW	YW	MILK	ME	HPG	CEM	STAY	MARB	YG	CW	REA	FAT	PROS	HB	GM
13	-1.1	62	99	23	5	10	4	13	0.27	0.07	19	-0.01	0.01	59	23	37

This female is a smooth-made, eye-catching daughter of Fairwind, a bull known for stamping cattle with balance, softness, and an attractive silhouette. This late-September heifer is especially good in her lines—level topped, clean through her front end, and flexible on the move. She brings a nice combination of femininity and center body shape, giving her both show-ring appeal and the fundamentals needed for long-term cow power. Practical, correct, and naturally stylish, the kind of open female that only improves with age and development.

49

FREE WIND 94

RED ANGUS | RAA: 5151899 | DOB: 09.26.2024 | TATTOO: 94

MANN RED BOX 55C
DUFF FAIR WIND 21197
 DUFF CITA 4060 15508

KJHT POWER TAKE OFF
FREE MARIA POWER 25H
 FREE TULIP 65E

SLGN WIDELOAD 920W
 PELTON MISS AJA 0839U
 DUFF E BLAST 8138
 GT CITA 4060
 RED SOO LINE POWER EYE 161X
 SRA PAINTBUCKET
 BECKTON EPIC R397 K
 THIS Z47L OF 47L NORSEMAN

CED	BW	WW	YW	MILK	ME	HPG	CEM	STAY	MARB	YG	CW	REA	FAT	PROS	HB	GM
10	0.6	60	98	23	6	11	3	14	0.15	0.03	18	0.07	0.01	54	24	30

An elegant, smooth-made daughter of Fairwind, displaying the balance and structural correctness that have made his young females so appealing. She's long-fronted and feminine, yet still shows the depth and rib shape needed for long-term productivity. This late-September heifer moves with ease and carries a refined, eye-catching profile that gives her both show-ring presence and brood-cow potential. With her attractive design, flexibility, and developing maternal look, an open female that's hard not to appreciate.



50

FREE RED LABEL 125

RED ANGUS | RAA: 5151905 | DOB: 09.08.2024 | TATTOO: 125

CED	BW	WW	YW	MILK	ME	HPG	CEM	STAY	MARB	YG	CW	REA	FAT	PROS	HB	GM
10	1.2	69	112	24	-2	12	6	20	0.39	0.09	27	0.06	0.01	144	92	52

LEM RELIABLE 9003 ET
SHAG RED LABEL 120
 SHAG MS. MAX 944

DUFF RED LOOK 1974
FREE BELLE 21K
 FREE BELLE 8D

RREDS SENECA 731C
 LEM REDEMPTION 616 ET
 RED FLYING K MAX 159Y
 ARO MS UNO 273
 MANN RED BOX 55C
 DUFF SKY 1A 1637
 4MC PROSPECT 423
 4MC BELLE 4148

An eye-catching daughter of Shag Red Label, and she carries the extra style, smoothness, and presence that have made his young females so popular. This early-September heifer is clean and refined up front, blends smoothly through her shoulder, and offers a balanced, attractive profile from every angle. She pairs that femininity with the right amount of body and dimension, giving her the tools to develop into a productive, long-lasting cow. Athletic, well-structured, and naturally appealing, an open female with strong maternal value.

51

FREE PTO 57

RED ANGUS | RAA: 5151893 | DOB: 09.15.2024 | TATTOO: 57

CED	BW	WW	YW	MILK	ME	HPG	CEM	STAY	MARB	YG	CW	REA	FAT	PROS	HB	GM
13	-1.1	54	89	25	3	10	7	11	0.26	0.11	23	-0.09	0.01	66	23	44

RED SOO LINE POWER EYE 161X
KJHT POWER TAKE OFF
 SRA PAINTBUCKET

BIEBER H HUGHES W109
BIEBER EUCLA 148A
 BIEBER EUCLA 226Y

RED COCKBURN RIBEYE 308U
 RED TR LYNN 301R
 RED NORTHLINE FATTONY 605U
 SRA PICABO PROMISE
 BASIN HOBO 0545
 BASIN ROSE 0670
 VGW OLY 903
 BIEBER EUCLA 8649

A bold-made, maternal-oriented daughter of PTO, a sire noted for adding power, depth, and structural correctness to his females. This mid-September heifer is wide at the base, soft in her rib shape, and carries a natural presence that catches your eye without trying. She's practical in her build, strong over her top, and fluid on the move—an ideal combination for long-term functionality. With her extra body, brood-cow character, and no-nonsense design, the kind that will grow into a hardworking, reliable cow while still offering the look and quality to compete as a young female.



DUFF AMAL 6061 22502

RED ANGUS | RAA: 4694585 | DOB: 09.10.2022 | TATTOO: 22502

DUFF CORNERSTONE 16136
DUFF RED WOOD 1941
 DUFF DIXIE ERICA 144 1532

PZC TMAS FIRESTORM 1800 ET
ROJAS AMAL 6061
 SIX MILE LAKOTA 112Y

RED BLAIRS BINGO 581B
 DUFF JUANADA 927K 246
 WCR HAMMELECH 812Z
 DUFF BL 505 DIXIEERICA 144
 RED SIX MILE SAKIC 832S
 GT CITA 4060
 VGW GAME PLAN 816
 SIX MILE LAKOTO 16W

CED	10	HPG	11	REA	0.08
BW	0.4	CEM	5	FAT	0.01
WW	64	STAY	14	PROS	76
YW	93	MARB	0.29	HB	52
MILK	22	YG	0.01	GM	23
ME	-8	CW	11		



DAM, ROJAS
AMAL 6061



SERVICE SIRE, DUFF FEAR NOT 20123

P.E.'d to DUFF Fear Not 20123.

Duff Amal 6061 22502 is a beautifully designed daughter of Duff Red Wood 1941, and she reflects his trademark balance, depth, and structural correctness. She combines a smooth, extended front end with a broad center body and a strong, secure udder attachment—qualities that have made Red Wood females reliable and highly valued. Her dam, the influential Rojas Amal 6061, anchors this pedigree with proven maternal strength, fertility, and the kind of longevity that builds cow families. 22502 has matured into a cow that is both visually impressive and highly practical. She maintains condition with ease, stays sound on her feet, and consistently raises calves with growth and vigor. With her pedigree, phenotype, and productive track record, Duff Amal 6061 22502 represents a powerful blend of maternal influence and long-term value.

Retaining the rights to one IVF cycle.



FREE EXPECTATION 81-F

RED ANGUS | RAA: 3948281 | DOB: 03.07.2018 | TATTOO: 81-F

PZC TMAS FIRESTORM 1800 ET
ROJAS RIOJA 6052
 SIX MILE LAKOTA 112Y

BIEBER RUMOR HAS IT A554
BIEBER EXPECTATION 384C
 BIEBER EXPECTATION Z475

RED SIX MILE SAKIC 832S
 GT CITA 4060
 VGW GAME PLAN 816
 SIX MILE LAKOTA 16W
 BIEBER ROOSEVELT W384
 BASIN PRIDE 2048
 LSF JBOB EXPECTATION 6034S
 BASIN OPAL 7385

CED	13	HPG	12	REA	-0.05
BW	0.2	CEM	7	FAT	-0.01
WW	68	STAY	17	PROS	94
YW	98	MARB	0.25	HB	81
MILK	27	YG	0	GM	13
ME	-4	CW	10		



SERVICE SIRE, DUFF CINCH 23270

A.I.'d 4/9/25 to DUFF Cinch 23270. P.E.'d to DUFF Cinch 23270.

Free Expectation 81-F is the kind of mature female that anchors a program with stability and predictability. Sired by Rojas Rioja 6052, she carries his hallmark balance, structural correctness, and athletic movement. On the bottom side, her dam Bieber Expectation 384C adds a reputation for fertility, udder quality, and the kind of longevity that keeps a cow line advancing year after year. 81-F has proven herself through consistent production, maintaining a sound build and the easy-keeping look that makes management straightforward. She raises calves with performance, stays in ideal condition, and brings the calm, maternal disposition breeders appreciate. With her pedigree, structure, and track record, this cow represents time-tested value and dependable future returns.



54

FREE MARIA POWER 25H

RED ANGUS | RAA: 4405139 | DOB: 02.16.2020 | TATTOO: 25H

CED	BW	WW	YW	MILK	ME	HPG	CEM	STAY	MARB	YG	CW	REA	FAT	PROS	HB	GM
9	0.5	55	93	19	2	11	5	13	0.12	0.03	15	0.04	0	58	29	29

RED SOO LINE POWER EYE 161X
KJHT POWER TAKE OFF
 SRA PAINTBUCKET

BECKTON EPIC R397 K
FREE TULIP 65E
 THIS Z47L OF 47L NORSEMAN

RED COCKBURN RIBEYE 308U
 RED TR LYNN 301R
 RED NORTHLINE FAT TONY 605U
 SRA PICABO PROMISE
 BECKTON EPIC K F075
 BECKTON KIT F468 JL
 5L NORSEMAN KING 2291
 CH 4912 TULIP 47L

A.I.'d 4/9/25 to DUFF Cinch 23270. P.E.'d to DUFF Cinch 23270.

Free Maria Power 25H is a feminine, well-structured daughter of KJHT Power Take Off, carrying his recognizable blend of muscle expression and maternal practicality. She's smooth in her lines, balanced from every angle, and maintains an easy-fleshing look that keeps her productive year after year. Her dam, Free Tulip 65E, continues to anchor this cow family with reliability and strong maternal instincts—traits that are clearly reflected in 25H's calves. She has developed into the type of cow that does her job quietly and consistently: raising calves with growth, staying sound on her feet, and maintaining the kind of structural quality that supports long-term performance. Free Maria Power 25H represents a dependable breeding piece with years of productive value still ahead.



55

FREE SURPRISE POWER 7G

RED ANGUS | RAA: 4343237 | DOB: 09.21.2019 | TATTOO: 7G

CED	BW	WW	YW	MILK	ME	HPG	CEM	STAY	MARB	YG	CW	REA	FAT	PROS	HB	GM
15	-0.6	57	92	28	4	8	9	11	0.17	0	17	-0.01	-0.02	56	23	34

RED SOO LINE POWER EYE 161X
KJHT POWER TAKE OFF
 SRA PAINTBUCKET

ANDRAS FUSION R236
BIEBER SURPRISE 113C
 BIEBER SUPRISE 497A

RED COCKBURN RIBEYE 308U
 RED TR LYNN 301R
 RED NORTHLINE FAT TONY 605U
 SRA PICABO PROMISE
 ANDRAS IN FOCUS B175
 ANDRAS BELLE B167
 BECKTON EPIC R397 K
 BIEBER SUPRISE 262U

A.I.'d 4/9/25 to DUFF Cinch 23270. P.E.'d to DUFF Cinch 23270.

Free Surprise Power 7G is a stout, maternally driven daughter of KJHT Power Take Off, and she carries his signature power, body depth, and structural width. She's the kind of cow that stays in working shape with very little pampering—broad-based, strong-topped, and steady in her movement. Her dam, Bieber Surprise 113C, is a cornerstone female known for fertility and longevity, and those qualities show clearly in 7G's consistency and reliability. Now well into her productive years, 7G has demonstrated the ability to wean calves with growth and performance while maintaining an easy-keeping, durable build. She represents the kind of maternal strength and dependable output that anchors a cow herd for the long haul.



56

FREE SANDY 18J

RED ANGUS | RAA: 4670089 | DOB: 02.19.2021 | TATTOO: 18J

CED	BW	WW	YW	MILK	ME	HPG	CEM	STAY	MARB	YG	CW	REA	FAT	PROS	HB	GM
11	0	59	95	17	3	9	5	8	0.09	0.05	16	-0.12	-0.01	17	-3	21

RED SOO LINE POWER EYE 161X
KJHT POWER TAKE OFF
 SRA PAINTBUCKET

WEBR NIGHTTRAIN 324
MF SANDY 6310
 JRA JAMES 4153

RED COCKBURN RIBEYE 308U
 RED TR LYNN 301R
 RED NORTHLINE FAT TONY 605U
 SRA PICABO PROMISE
 WEBR DOC HOLLIDAY 2N
 BJF LANA'S EQUAL 8021U
 HI-G 137
 JRA JAMES 3203

A.I.'d 4/9/25 to DUFF Cinch 23270. P.E.'d to DUFF Cinch 23270.

Free Sandy 18J is a capacious, strong-made daughter of KJHT Power Take Off, a sire admired for producing females with extra rib shape, structural soundness, and dependable maternal performance. This cow follows that pattern closely—deep through her center, confident on the move, and broad in the kind of way that keeps mature cows productive with minimal effort. Her dam, MF Sandy 6310, adds a maternal line known for fertility, udder quality, and calves that hit the ground ready to grow. 18J has proven herself as a steady contributor, raising calves that balance growth with efficiency while maintaining the easy-keeping look that makes her so practical. With her pedigree strength and real-world cow sense, Free Sandy 18J offers both reliability and long-term value to any herd.



57

FREE 21-118

RED ANGUS | RAA: 5149357 | DOB: 09.28.2021 | TATTOO: 21-118

CED	BW	WW	YW	MILK	ME	HPG	CEM	STAY	MARB	YG	CW	REA	FAT	PROS	HB	GM
9	1.2	85	141	28	21	11	7	15	0.27	0.03	45	0.57	0.03	97	41	56

WEBR MAXED OUT 627
J6 MAXED OUT 121G
 J6 TEMPEST B300

4MC PROSPECT 423
FREE BELLE 8D
 4MC BELLE 4148

BIEBER ROLLIN DEEP Y118
 MISS BHR COPPER D 946
 WEBR TC CARD SHARK 1015
 SLGN STONY'S TEMPEST 778T
 LSF PROSPECT 2035Z
 4MC SILKWOOD 201
 4MC RED BULL 2100
 4MC BELLE

A.I.'d 4/9/25 to DUFF Cinch 23270. P.E.'d to DUFF Cinch 23270.

Free 21-118 is a feminine, well-composed daughter of J6 Maxed Out 121G, a sire known for adding structural integrity, center body, and a strong maternal look to his daughters. She carries those traits naturally—smooth across her top, deep through her middle, and correct at the ground. Her dam, Free Belle 8D, has been a steady producer with an emphasis on udder quality and longevity, key attributes that shine through in 21-118's overall design. Now entering her prime production years, 21-118 has the kind of balance and reliability that make a cow valuable long-term. She maintains condition easily, raises calves with consistency, and possesses the maternal presence that signals years of productive life ahead.



FREE COWGIRL MORGAN 13-F

RED ANGUS | RAA: 3948271 | DOB: 02.20.2018 | TATTOO: 13-F

BUF CRK THE RIGHT KIND U199
PIE THE COWBOY KIND 343
PIE CASCADE 561

MRLA NEW ERA 87Y
RED MRLA MISS 5336C
RED GARA ERIKA 150S

BUF CRK LANCER R017
BUF CRK SHOSHONE R353
PIE CODE RED 9058
TPIE CASCADE 561
MRLA 53W
RED MRLA MISS 845S
RED GEIS KNIGHT 26'02
RED TOP LINE ERICA 1K

CED	12	HPG	10	REA	0.07
BW	-0.9	CEM	7	FAT	-0.01
WW	53	STAY	16	PROS	111
YW	87	MARB	0.48	HB	52
MILK	23	YG	0	GM	60
ME	4	CW	20		



SERVICE SIRE, DUFF CINCH 23270

P.E.'d to DUFF Cinch 23270.

Free Cowgirl Morgan 13-F brings the trademark look and substance of Pie The Cowboy Kind 343, blending power with a maternally driven, efficient build. This daughter is wide-based, steady in her structure, and maintains the easy-fleshing capacity that keeps mature cows working year after year. Her dam, Red MRLA Miss 5336C, adds another layer of durability and proven maternal strength, giving Morgan the kind of genetic base that consistently produces calves with vigor and growth. Now several calves into her career, Morgan continues to demonstrate why these pedigrees have earned such trust. She mothers well, stays sound on her feet and legs, and maintains condition with minimal input. Free Cowgirl Morgan 13-F represents the type of cow that adds long-term stability to a herd—dependable, productive, and built to last.

Retaining the rights to one IVF cycle.



59

FREE SURPRISE 9E

RED ANGUS | RAA: 3748329 | DOB: 01.17.2017 | TATTOO: 9E

CED	BW	WW	YW	MILK	ME	HPG	CEM	STAY	MARB	YG	CW	REA	FAT	PROS	HB	GM
13	-2.8	70	103	20	8	10	8	15	0.45	0.15	27	0.07	0.04	94	50	44

BIEBER ROUSE SAMURAI X22
BIEBER SPARTACUS A193
 BIEBER TILLY 233U

 BIEBER H HUGHES W109
BIEBER SUPRISE 558C
 BIEBER SUPRISE 316W

LCC CHEYENNE B221L
 GHR MARITA R31
 LCOC HIGH NOON A093R
 BIEBER TILLY 7334
 BASIN HOBO 0545
 BASIN ROSE 06T0
 LCC FIELD DAY A614N
 BIEBER SUPRISE 8957

P.E'd to DUFF Cinch 23270.

Free Surprise 9E is a long-serving, highly reliable daughter of Bieber Spartacus A193, a sire known for transmitting depth, muscle, and exceptional udder quality. Her dam, Bieber Surprise 558C, adds another layer of maternal consistency, making this cow a product of one of the most proven and dependable cow families in the Bieber program. 9E carries the kind of structural integrity and natural mass that keep a cow productive deep into maturity. She maintains an easy-fleshing build, raises calves with vigor, and brings the kind of quiet, low-maintenance attitude that makes her a natural fit in any environment. Backed by years of real-world performance and strong maternal heritage, Free Surprise 9E offers a solid, trustworthy option for buyers looking to add staying power to their herd.



60

FREE ELINE 19G

RED ANGUS | RAA: 4217202 | DOB: 01.24.2019 | TATTOO: 19G

CED	BW	WW	YW	MILK	ME	HPG	CEM	STAY	MARB	YG	CW	REA	FAT	PROS	HB	GM
10	-1.3	78	126	28	14	12	7	18	0.29	0.08	27	-0.06	-0.01	103	63	40

BROWN P707 X7877
DUBAS EXCELLENT ANSWER
 LCS 012

 WEBR NIGHTTRAIN 324
MF ELINE 6333
 ALMS A35

BECKTON NEBULA P P707
 BROWN MS DESTINATION T7664
 S A V FINAL ANSWER 0035
 BDEE MISS PAGE 748
 WEBR DOC HOLLIDAY 2N
 BJF LANA'S EQUAL 8021U
 ALMS 355X
 ALMS 35U

P.E'd to DUFF Cinch 23270.

Free Eline 19G is an easy-keeping, maternal daughter of Dubas Excellent Answer, a sire appreciated for adding structural correctness and longevity to his females. She carries that influence well—broad through her center, steady on her feet and legs, and maintaining a balanced, productive look year-round. Her dam, MF Eline 6333, comes from a cow family known for fertility and consistency, and those strengths show clearly in 19G's track record. She has developed into the kind of cow that performs quietly and efficiently—raising calves with growth and doing it with minimal maintenance. With her structural integrity, dependable maternal traits, and proven productivity, Free Eline 19G offers lasting value to any program centered on cows that stand the test of time.



FREE MARIA 25G

RED ANGUS | RAA: 4217224 | DOB: 02.28.2019 | TATTOO: 25G

CED	BW	WW	YW	MILK	ME	HPG	CEM	STAY	MARB	YG	CW	REA	FAT	PROS	HB	GM
9	0.9	67	114	21	8	14	6	20	0.63	0.09	27	0.13	0.02	163	85	78

MLK CRK UNIFIED 4207
FREE UNIFIED2E
BASIN DAKEL W154

BECKTON EPIC R397 K
FREE TULIP 65E

THIS Z47L OF 47L NORSEMAN

ANDRAS FUSION R236
MLK CRK LAKOTA 953
BASIN EXT 6359
BASIN DAKEL 3009
BECKTON EPIC K F075
BECKTON KIT F468 JL
5L NORSEMAN KING 2291
CH 4912 TULIP 47L

P.E.'d to DUFF Cinch 23270.

Free Maria 25G is a productive daughter of Free Unified 2E, carrying his trademark structural soundness and practical, moderate build. She maintains the kind of balance and depth that keep mature cows efficient and easy to manage. Her dam, Free Tulip 65E, adds a maternal line known for fertility, quiet dispositions, and long-lasting udder quality—traits that continue to come through in 25G's calves. Now firmly in her working years, this cow has proven her ability to raise the right kind of sons and daughters—vigorous at birth, consistent in growth, and easy to market. Free Maria 25G offers a dependable combination of genetics and real-world productivity, making her a solid addition for any operation focused on cow families that hold up over time.



FREE SURPRISE 7E

RED ANGUS | RAA: 3748335 | DOB: 02.12.2017 | TATTOO: 7E

CED	BW	WW	YW	MILK	ME	HPG	CEM	STAY	MARB	YG	CW	REA	FAT	PROS	HB	GM
14	-1.6	61	97	30	9	15	11	15	0.41	0.04	13	-0.09	0	112	69	44

LSF PROSPECT 2035Z
LSF TBJ PROUD 5875C
RAISLAND LAKOTA 103-43

ANDRAS FUSION R236
BIEBER SURPRISE 113C
BIEBER SUPRISE 497A

LSF NIGHT CALVER 9921W
LSF BLACKBIRD N3080 X0406
LSF JBOB EXPECTATION 6034S
DZA LAKOTA 1803
ANDRAS IN FOCUS B175
ANDRAS BELLE B167
BECKTON EPIC R397 K
BIEBER SUPRISE 262U

A.I.'d 4/9/25 to DUFF Cinch 23270. P.E.'d to DUFF Cinch 23270.

Free Surprise 7E is the kind of proven female every program appreciates—steady, productive, and built with the maternal quality that stands the test of time. Sired by LSF TBJ Proud 5875C and backed by the respected Bieber Surprise 113C, this cow blends two pedigrees known for fertility, udder quality, and real-world adaptability. Her structure remains sound, her body shape stays easy-fleshing, and her quiet nature makes her a pleasure to have around. Year after year, 7E has raised calves that come easy, grow well, and hold value—an indicator of the predictability she brings to the table. With her balanced design and long-standing record of doing things right, she offers a dependable opportunity for buyers seeking a cow that still has plenty of productive years ahead.

63

FREE COWGIRL 40J

RED ANGUS | RAA: 4670079 | DOB: 02.09.2021 | TATTOO: 40J

PIE FUSION 576
MF FUSION 8637
 MF MARILYN 6327

PIE THE COWBOY KIND 343
FREE COWGIRL MORGAN 13-F
 RED MRLA MISS 5336C

ANDRAS FUSION R236
 PIE YOGO 3075
 RED SOO LINE POWER EYE 161X
 MF MARILYN 0165
 BUF CRK THE RIGHT KIND U199
 PIE CASCADE 561
 MRLA NEW ERA 87Y
 RED GARA ERIKA 150S



CED	BW	WW	YW	MILK	ME	HPG	CEM	STAY	MARB	YG	CW	REA	FAT	PROS	HB	GM
13	-1.5	47	78	22	1	10	7	14	0.4	0.04	11	-0.12	-0.01	89	40	49

A.I.'d 4/9/25 to DUFF Cinch 23270. P.E.'d to DUFF Cinch 23270.

Free Cowgirl 40J is a well-made, maternal daughter of MF Fusion 8637, a sire known for combining structural soundness with the kind of fleshing ability that keeps cows productive under a variety of conditions. She carries that influence with ease—broad through her center, confident in her stride, and balanced from every angle. Her dam, Free Cowgirl Morgan 13F, has long been admired for her durability and strong maternal instincts, and those traits are clearly passed on to 40J. This young cow has already shown she can raise calves with vigor and growth while maintaining her own body condition throughout the year. With her dependable build, quiet demeanor, and strong maternal foundation, Free Cowgirl 40J offers long-term value and consistency for any program focused on practical, efficient cow fami-

64

FREE SUNSHINE 2 FF

RED ANGUS | RAA: 4104916 | DOB: 11.22.2018 | TATTOO: 2FF

HMF VALOR 7326
MF VALOR 5502
 MF ROXANNE 3502

BASIN EXT 6359
BASIN DAKEL W154
 BASIN DAKEL 3009

OLC VALOR N131
 OLC COCA N23
 MF STERLING SILVER 8153
 MF SPECIAL KING'S 502
 BASIN EXT 1925
 BASIN DYNAMO 3016
 BASIN LOGAN 0882
 BASIN DAKEL 0205



CED	BW	WW	YW	MILK	ME	HPG	CEM	STAY	MARB	YG	CW	REA	FAT	PROS	HB	GM
13	-4.4	49	74	22	8	11	7	17	0.07	0.01	15	0.18	0.01	68	52	16

A.I.'d 4/9/25 to DUFF Cinch 23270. P.E.'d to DUFF Cinch 23270.

Free Sunshine 2FF is a deep-ribbed, steady-producing daughter of MF Valor 5502, a sire known for adding structural integrity, fleshing ability, and maternal presence to his females. Sunshine carries those traits naturally—broad through her middle, sound in her stride, and able to maintain condition with ease. Her dam, Basin Dakel W154, comes from a cow family praised for fertility and udder longevity, and that influence shows plainly in this cow's practical build and predictable production record. Sunshine has proven herself year after year with calves that are vigorous at birth and carry performance through weaning. She is the kind of mature cow that quietly contributes value—dependable, balanced, and built to keep working deep into her productive life.

65

FREE JOSEPHINA 39H

RED ANGUS | RAA: 4343885 | DOB: 02.27.2020 | TATTOO: 39H

SLGN WIDELOAD 920W
PELTON WIDELOAD 78B
 PELTON MISS JAYLA 0508S

WEBR RURAL ROUTE 561
FREE JOSEPHINA 3-F
 BIEBER ELDORENE 366C

UBAR HIGH CAPACITY 224
 MEADO-WEST PERSUASION
 NEO-SHO DIRECT TICKET M517
 PELTONS MISS CORY 5037N
 WEBR NIGHT TRAIN 324
 WEBR EMILY 1135
 LSF RAB EXCLUSIVE 2793Z
 BIEBER ELDORENE 190Z



CED	BW	WW	YW	MILK	ME	HPG	CEM	STAY	MARB	YG	CW	REA	FAT	PROS	HB	GM
13	-2.3	72	113	29	4	8	5	16	0.71	0.11	21	0.02	0.03	106	44	62

P.E.'d to DUFF Cinch 23270.

Free Josephina 39H is a well-made, maternally strong daughter of Pelton Wideload 78B, a sire admired for producing cows with extra body capacity, structural stability, and long-term usefulness. This female follows that pattern closely—big-centered, level in her build, and steady on her feet and legs. Her dam, Free Josephina 3F, adds another layer of maternal reliability, giving 39H the kind of background that consistently produces growth and longevity in her calves. Josephina is the type of cow that settles in and works—raising calves with performance while maintaining a sound, low-input design. With her maternal pedigree and proven practicality, she offers the kind of predictable value that strengthens a cow herd from the inside out.





DUFF CINCH 23270

RAA# 476563 / 01.31.2019

S: DUFF HD 2046 / D: DUFF LADY 2X 1772 2085

CED	10	HPG	11	REA	0.17
BW	-0.6	CEM	3	FAT	-0.02
WW	64	STAY	15	PROS	53
YW	98	MARB	0.05	HB	41
MILK	26	YG	-0.08	GM	12
ME	4	CW	12		



DUFF RED LOOK 1974

RAA# 4384441 / 01.31.2019

S: MANN RED BOX 55C / D: DUFF SKY 1A 1637

CED	17	HPG	12	REA	0.18
BW	-3.1	CEM	8	FAT	0.02
WW	59	STAY	15	PROS	84
YW	92	MARB	0.42	HB	58
MILK	24	YG	0.06	GM	26
ME	0	CW	-1		

DUFF FEAR NOT 20123

RAA# 4667975 / 1030.2022

S: DUFF FEARLESS 20123 / D: DUFF 3044A 17502

CED	12	HPG	11	REA	0.35
BW	-0.6	CEM	6	FAT	0.03
WW	66	STAY	15	PROS	88
YW	104	MARB	0.19	HB	53
MILK	0.24	YG	0.02	GM	35
ME	0	CW	26		







MONDAY, 12.22.2025
7:00 P.M. C.S.T. | POWERED BY 