

LINHART LIMOUSIN

16th Annual



*Fall
Harvest*

ELITE FEMALE SALE

SATURDAY, OCTOBER 18, 2025

1 PM CST - LINHART SALE FACILITY, LEON, IA



ELITE FEMALE SALE

SATURDAY, OCTOBER 18, 2025 • 1 PM

1 PM CST - LINHART SALE FACILITY, LEON, IA

AUCTIONEER:

CHISUM PETERSON605-730-4214

LIVESTOCK REPRESENTATIVES:

BILL HELTON, *Helton Consulting* 256-962-0256

SCOTT MANLEY, *Special Assignment* 417-860-5250

DERON HELDERMAN, *Special Assignment* 405-850-5102

CONSULTANT:



R&R MARKETING Randy Ratliff, 615-330-2735
RRMKTG.COM

MARKETING

SALE MANAGEMENT:



MC MARKETING MANAGEMENT

Kiley McKinna, 402-350-3447 kiley@mcmarketingmanagement.com

Wiley Fanta, 320-287-0751 wiley@mcmarketingmanagement.com

MCMARKETINGMANAGEMENT.COM

Event Schedule:

10:00 AM Viewing Begins
12:00 PM Complimentary Lunch
1:00 PM **2025 FALL HARVEST
ELITE FEMALE SALE BEGINS**

*Videos May Be Viewed Online at
LinhartLimousin.com*

SALE DAY PHONES:

CHARLES LINHART641-340-1306

AARON LINHART 641-414-5060

KYLE LINHART641-572-0263

KILEY MCKINNA..... 402-350-3447

SALE SITE DIRECTIONS:

GPS Address:

19166 270TH AVENUE • LEON, IOWA

From Leon, travel 2 miles north to 190th Street.

Turn east, go 3 miles to 270th Avenue. Turn

south, go 1/4 mile to sale facility on the east side.

ACCOMMODATIONS:

Lakeside Hotel & Casino: 641-342-9511

Osceola, Iowa

AmericInn: 641-342-9400

Osceola, Iowa

TERMS:

Cattle will sell under the standard sale terms and conditions of the North American Limousin Foundation. Payment may be made by cash or check due on sale day.

Retaining the right to one successful flush on all females selling, unless denoted otherwise in sale book or supplement sheet.

ANNOUNCEMENTS:

Announcements made sale day by the owners, auctioneer or sale management will take precedence over statements in the sale catalog.

EPD INFORMATION:

All EPDs and performance information are in accordance with the North American Limousin Foundation as of 9/12/25.

TRUCKING:

Free shipping will be available to central locations. Contact Charles Linhart, 641-340-1306, to make arrangements.



Welcome

LIMOUSIN FRIENDS & ENTHUSIASTS

We would like to cordially welcome you to our 16th Annual Fall Harvest Production Sale. We are a family operation located just north of Leon, Iowa, in the heart of cow-calf country of southern Iowa. Our Limousin and Lim-Flex operation started in 1979 and has grown to near 400 producing females. Over the years, we've always taken great pride in producing a quality product, our customers successes and doing things the right way.

In this sale offering we have brought you our very best. As you page through the catalog, we hope you'll notice the reflection of many of our premier donor cow families, elite herd sires, a progressive A.I. program and the no 'short-cuts' approach we've adopted over the years. Note, we have brought you our very finest open show heifer prospects. In totality, whether you're a junior looking for a show heifer project or breeder looking to make an investment, rest assured we'll have quality product backed with quality service.

With the sale offering in mind, we would like to take the time to reinforce to our fellow breeders and valued junior show families the opportunity of affordable success that can be found in our sale pens. Over the past several years, we have been extremely fortunate to have sold many females at wide ranging price points that have gone on to win championship banners at the local, regional and national levels. Folks, make no mistake October 18 there will be several high quality females at various price ranges to suit your budget.

That said, it's a priority of ours to make all business transactions with customers a pleasant experience. As it was last year, our sale will be held in our on farm sale facility (GPS directions found under sale information) and the cattle will be displayed in our on site display pens and will be auctioned off on video screens in our facility. In addition, all cattle sold are fully guaranteed to the catalog as in accordance with the North American Limousin Foundation as of September 12, 2025. Furthermore, if you would like to discuss the sight unseen purchase program, financial arrangements or trucking plans we are happy to accommodate.

We are excited to see all of you sale day October 18. If we can be of any assistance to you prior to or during the sale we have an open door policy and welcome all calls and questions.

*Sincerely,
The Linhart Family
Linhart Limousin*

**LINHART
LIMOUSIN**
Charles & Heather Linhart

**27195 175TH STREET
LEON, IOWA 50144**
Charles, 641-340-1306
Aaron Linhart, 641-414-5060
Kyle Linhart, 641-572-0263



NORTH AMERICAN INTERNATIONAL
LIVESTOCK EXPOSITION

2016

JUNIOR CATTLE
SHOW

Linde



Cardi

Starling



RESERVE SUPREME CHAMPION FEMALE
2024 TULSA STATE FAIR
EXHIBITED BY THE HADDON FAMILY

North Star

KQLL 5004N ET

1/3/25 // LIM-FLEX(64/57.5) // HET PLD // HOMO BLK (P-2) // LFF3467463

AUTO LUCKY STRIKE 118B
AUTO LUCKY GUY 140D ET
AUTO REBECA 479A

SILVEIRAS STYLE 9303
CELL CARDI 1403J ET
RIVERSTONE CHARMED

LH U HAUL 135U
AUTO LUCKIE 246W
MAGS XYLOPOLIST
AUTO REBECA 292S
GAMBLES HOT ROD
SILVEIRAS ELBA 2520
TMCK DURHAM WHEAT 6030X
HSF YOUR FANTASY

	CED	BW	WW	YW	MA	CM	SC	DC	CW	RE	YG	MS	\$TPI
EPD	12	1.4	75	120	22	6	0.7	12	24	.63	-.20	.04	67.74
Rank	30	60	35	30	80	55	80	65	95	50	30	85	>95

ACT. BW: 79

RETAINING 50% EMBRYO INTEREST, AFTER SHOW CAREER

KQLL North Star 5004N ET is the kind of female that anchors a program. She's bold in her rib shape, smooth in her design, and refined through her front one-third, all while standing on a correct, attractive skeleton. This Lucky Guy daughter has the presence and balance that set elite show heifers apart, but more importantly, the depth of quality to develop into a cornerstone donor. Backed by the CELL Cardi 1403J ET cow family, her pedigree matches the power of her phenotype. Selling 50% embryo interest in this exciting female offers a rare chance to invest in one of the most complete prospects to sell this year.



3RD OVERALL B&O LIM-FLEX FEMALE
2025 NATIONAL JR LIMOUSIN SHOW
FULL SISTER TO LOT 2

2 Niagara

KQLL 5002N ET

1/2/25 // LIM-FLEX(25/22.5) // HOMO PLD // HOMO BLK (P-2) // LFF3467470

PVF INSIGHT 0129
PVF BLACKLIST 7077
PVF BLACKBIRD 3070

SILVEIRAS STYLE 9303
CELL CARDI 1403J ET
RIVERSTONE CHARMED

S A V BRILLIANCE 8077
PVF MISSIE 790
DAMERON FIRST CLASS
ALL PVF BLACKBIRD 645
GAMBLES HOT ROD
SILVEIRAS ELBA 2520
TMCK DURHAM WHEAT 6030X
HSF YOUR FANTASY

	CED	BW	WW	YW	MA	CM	SC	DC	CW	RE	YG	MS	\$TPI
EPD	11	0.3	71	108	21	4	0.9	13	49	.61	.02	.22	116.5
Rank	45	35	45	60	85	85	45	50	20	55	90	50	25
ACT. BW: 70													

RETAINING 50% EMBRYO INTEREST, AFTER SHOW CAREER

Style and structure collide in this Blacklist × Cardi female. Niagara is sleek and refined up front, while staying loose, sound, and athletic on the move. She's the one that grabs your attention when she drives across the pen and holds it with every step. With Cardi's legacy behind her, this heifer isn't just about winning pictures—she's built for longevity and impact. She is a full sib to Kyle's 3rd Overall B&O Female at the 2025 NJLSC, further proving the consistency and quality in this mating.





5TH OVERALL LIMOUSIN FEMALE
2025 NATIONAL JR LIMOUSIN SHOW
EXHIBITED BY THE SENNETT FAMILY
3/4 SIB TO LOT 3

3 Nyla

KQLL 5005N ET

1/3/25 // LIM-FLEX(65/58.7) // HOMO PLD // HOMO BLK (P-2) // LFF3467474

MAGS XYLOID
ELCX KINGS LANDING 599 D ET
WLR PRADA

SILVEIRAS STYLE 9303
CELL CARDI 1403J ET
RIVERSTONE CHARMED

DHVO DEUCE 132R
BOHI RHONDA 314R
MAGSWL USUAL SUSPECT 538U
AUTO REBECA 292S
GAMBLES HOT ROD
SILVEIRAS ELBA 2520
TMCK DURHAM WHEAT 6030X
HSF YOUR FANTASY

	CED	BW	WW	YW	MA	CM	SC	DC	CW	RE	YG	MS	\$TPI
EPD	11	1.4	54	85	24	6	0.6	15	24	.22	.00	-.03	61.25
Rank	45	60	>95	95	60	55	80	20	95	>95	85	95	>95

ACT. BW: 76

When power and femininity line up this well, the result is special. Nyla, a Kings Landing × Cardi, is bold and broody without losing her attractive design. Square-hipped, deep-bodied, and correct on her feet and legs, she's the kind that transitions seamlessly from backdrop to donor pen. Genetics this proven, paired with phenotype this sharp, is the definition of long-term value. Her pedigree is already delivering results in the show ring, with a 3/4 sib shown by Sennett placing 5th at Nationals and a full sib shown by the Baker family taking Champion Limousin at the Missouri State Fair.



3RD OVERALL CHAMPION FEMALE
2024 AJCA ROUNDUP
EXHIBITED BY THE FRANKLIN FAMILY
MATERNAL SIB TO LOT 4

4 Nashville

KQLL 5042N ET

2/7/25 // LIM-FLEX(25/22.5) // HET PLD // HOMO BLK (P-2) // LFF3467469

EXAR BLUE CHIP 1877B
CONLEY NO LIMIT
SILVEIRAS S SIS SANDY 2355

SILVEIRAS STYLE 9303
CELL CARDI 1403J ET
RIVERSTONE CHARMED

DAMERON FIRST CLASS
GREENS PRINCESS 1012
SILVEIRAS STYLE 9303
K N C CABIN CREEK SANDY 804
GAMBLES HOT ROD
SILVEIRAS ELBA 2520
TMCK DURHAM WHEAT 6030X
HSF YOUR FANTASY

	CED	BW	WW	YW	MA	CM	SC	DC	CW	RE	YG	MS	\$TPI
EPD	6	1.3	77	119	19	3	0.8	15	41	.34	.05	.20	88.76
Rank	>95	60	25	35	95	95	55	20	45	90	95	55	80

ACT. BW: 77

RETAINING 50% EMBRYO INTEREST, AFTER SHOW CAREER

Nashville represents the best of two proven lines: Conley No Limit on the top side and Cardi on the bottom. Long-fronted, smooth-patterned, and level-made, she embodies the balance of elegance and structural integrity. No Limit continues to sire daughters with unmatched style, and combined with Cardi's production power, Nashville is the kind that will make her mark in both the show barn and the cow herd. Her maternal sibs have already left their mark in the ring, including the Haddon family's Champion honors at the Tulsa State Fair, OKC Division, and NAILE Division, as well as Portwood's State Fair Reserve Lim-Flex and Franklin's 3rd Overall AJCA Roundup. Don't miss your chance to stand in the winner's circle.





RESERVE LIM-FLEX FEMALE
2025 KENTUCKY STATE FAIR
EXHIBITED BY THE PORTWOOD FAMILY
MATERNAL SIB TO LOT 5

5 Nova

KQLL 5099N ET

3/5/25 // LIM-FLEX(25/22.5) // HET PLD // HOMO BLK (P-2) // LFF3467457

SCC SCH 24 KARAT 838
STAG GOOD TIMES 201 ET
SCC SCH PHYLLIS 6104

SILVEIRAS STYLE 9303
CELL CARDI 1403J ET
RIVERSTONE CHARMED

SCC TRADITION OF 24
FCF PROVEN QUEEN 419
SILVEIRAS STYLE 9303
SCC PHYLLIS 052
GAMBLES HOT ROD
SILVEIRAS ELBA 2520
TMCK DURHAM WHEAT 6030X
HSF YOUR FANTASY

	CED	BW	WW	YW	MA	CM	SC	DC	CW	RE	YG	MS	\$TPI
EPD	12	0.7	68	102	24	6	0.9	13	36	.38	.05	.18	82.75
Rank	30	45	60	70	60	55	55	50	60	90	95	60	85

ACT. BW: 72

Nova brings together the winning look of Good Times with the consistency of Cardi—and the result is powerful. Feminine and attractive through her front, bold in her rib shape, and soft in her movement, she checks every box for a competitive show heifer. Just like her sisters, she carries the maternal look and longevity that make the Cardi influence so valuable. Nova is the kind to hang banners now and raise them later. Her maternal sibs have already left their mark in the ring, including the Haddon families Champion honors at the Tulsa State Fair, OKC Division, and NAILE Division, as well as Portwood's State Fair Reserve Lim-Flex and Franklin's 3rd Overall AJCA Roundup. From every angle, this female embodies quality, balance, and presence. A pedigree that doesn't miss.



RES. DIV LIM-FLEX FEMALE
2024 CATTLEMEN'S CONGRESS
EXHIBITED BY THE HADDON FAMILY
MATERNAL SIB TO LOT 6

6 Noble

KQLL 4403M ET

11/3/24 // LIM-FLEX(60/54.4) // HOMO PLD // HOMO BLK (P-2) // LFF3349163

ELCX KINGS LANDING 599 D ET
ELCX HIGH TIME 065H ET
ELCX ELEVATE 684E ET

SILVEIRAS STYLE 9303
CELL CARDI 1403J ET
RIVERSTONE CHARMED

MAGS XYLOID
WLR PRADA
EF XCESSIVE FORCE
DFLC HBHPC 1S
GAMBLES HOT ROD
SILVEIRAS ELBA 2520
TMCK DURHAM WHEAT 6030X
HSF YOUR FANTASY

	CED	BW	WW	YW	MA	CM	SC	DC	CW	RE	YG	MS	\$TPI
EPD	12	1.4	65	103	22	7	1.0	15	28	.10	.07	.20	69.06
Rank	30	60	70	70	80	35	45	20	85	>95	95	55	>95
ACT. BW: 62													

Big, powerful, and commanding—this High Time × Cardi heifer has presence to burn. Wide from behind, deep through her body, and still elegant up front, Noble strikes the kind of balance that doesn't come along often. She's the kind that can stand out in a tough class and then go on to be a cow with production written all over her. Her maternal sibs have already left their mark in the ring, including the Haddon families Champion honors at the Tulsa State Fair, OKC Division, and NAILE Division, as well as Portwood's State Fair Reserve Lim-Flex and Franklin's 3rd Overall AJCA Roundup.





CELL LEGACY CHARM
OWNED BY THE MORRIS FAMILY
FULL SIB TO LOT 7

7 Natalie

CELL 5001N ET

1/1/25 // LIM-FLEX(50/44.9) // HET PLD // HOMO BLK (P-1) // LFF3467462

PVF INSIGHT 0129
BNWZ DIGNITY 8017
CCC SARA'S DREAM 5116

TMCK DURHAM WHEAT 6030X
RIVERSTONE CHARMED
HSF YOUR FANTASY

S A V BRILLIANCE 8077
PVF MISSIE 790
DAMERON FIRST CLASS
SILVEIRAS SARAS DREAM 1339
DHVO DEUCE 132R
MAGS STRAWBERRY PIE
MAGS WAR ADMIRAL
HSF TINKERBELL

	CED	BW	WW	YW	MA	CM	SC	DC	CW	RE	YG	MS	\$TPI
EPD	8	1.6	68	97	27	4	1.0	13	31	.53	-.12	-.03	74.19
Rank	85	65	60	80	35	85	45	50	80	65	50	95	95

ACT. BW: 88

Here's a Dignity x Charmed daughter with all the bells and whistles. Natalie is refined through her front end, level in her top, and sound in her movement—offering the style and correctness that win banners. Dignity continues to sire females with both phenotype and genetic depth, and when crossed on Charmed, you get a pedigree stacked with show ring history and proven maternal power. She is a full sib to Bevin Bertsche's NWSS Champion Lim-Flex female and Morris' Division Champion Lim-Flex female at OKC and KC.



CHAMPION LIM-FLEX FEMALE
2024 AKSARBEN
EXHIBITED BY THE COFFEY FAMILY
FULL SIB TO LOTS 8 & 9

Nola

CELL 5008N ET

1/4/25 // LIM-FLEX(50/44.9) // HOMO PLD // HOMO BLK (P-1) // LFF3467476

GAMBLES HOT ROD
SILVEIRAS STYLE 9303
SILVEIRAS ELBA 2520

TMCK DURHAM WHEAT 6030X
RIVERSTONE CHARMED
HSF YOUR FANTASY

FAMOUS 7001
CHAMPION HILL LADY 703
TWIN VALLEY PRECISION E161
D A R ELBA 55
DHVO DEUCE 132R
MAGS STRAWBERRY PIE
MAGS WAR ADMIRAL
HSF TINKERBELL

	CED	BW	WW	YW	MA	CM	SC	DC	CW	RE	YG	MS	\$TPI
EPD	14	1.2	59	92	24	8	0.8	12	26	.34	.01	.14	73.19
Rank	10	55	90	90	60	20	55	65	90	90	85	65	95
ACT. BW: 83													

RETAINING 50% EMBRYO INTEREST, AFTER SHOW CAREER

Nola is a Style × Charmed that exemplifies eye appeal. She's sharp-fronted, clean-patterned, and as complete as they come. It's hard to poke a hole in one that is this attractive from every angle, and when you add in the predictability of this mating, you've got a heifer that's a safe bet for both the ring and the pasture. Her full sibs have already excelled in the show ring, including the well-known Cardi donor, Sennett's Division 6 Champion at Nationals, Karly Payne's Champion Lim-Flex at OKC, Jiggy 1401 and Coffey's Aksarben Breed Champion and Winter Jackpot Champion.





CHAMPION LIM-FLEX FEMALE
2023 CATTLEMEN'S CONGRESS
EXHIBITED BY THE PAYNE FAMILY
FULL SIB TO LOTS 8 & 9

9 Nanny

CELL 5006N ET

1/3/25 // LIM-FLEX(50/44.9) // HET PLD // HOMO BLK (P-1) // LFF3467475

GAMBLES HOT ROD
SILVEIRAS STYLE 9303
SILVEIRAS ELBA 2520

TMCK DURHAM WHEAT 6030X
RIVERSTONE CHARMED
HSF YOUR FANTASY

FAMOUS 7001
CHAMPION HILL LADY 703
TWIN VALLEY PRECISION E161
D A R ELBA 55
DHVO DEUCE 132R
MAGS STRAWBERRY PIE
MAGS WAR ADMIRAL
HSF TINKERBELL

	CED	BW	WW	YW	MA	CM	SC	DC	CW	RE	YG	MS	\$TPI
EPD	10	1.8	57	88	24	6	0.8	13	22	.26	.00	.27	68.42
Rank	60	70	95	95	60	55	55	50	95	95	85	40	>95

ACT. BW: 82

Striking on the profile and flexible on the move, Nanny is the kind of heifer that can command attention in motion. Another Style × Charmed daughter, she blends the sharp look of Style with the depth and do-ability of Charmed. She's got that unmistakable "show heifer look" with the added bonus of cow power in her corner. Her full sibs have already excelled in the show ring, including the well-known Cardi donor, Sennett's Division 6 Champion at Nationals, Karly Payne's Champion Lim-Flex at OKC, Jiggy 1401 Coffey's Aksarben Breed Champion and Winter Jackpot Champion and Payne's Champion at Cattlemen's Congress. This show heifer prospect has the full sibs to make you confident in a future full of banners.





AUTO CALLIE 403D
DAM OF LOTS 10 & 11

10 Nora

CELL 5003N ET

1/2/25//LIM-FLEX(31/27.5)//HOMOPLD(P-1)//HOMOBLK(P-1)//LFF3467471

SCC SCH 24 KARAT 838
STAG GOOD TIMES 201 ET
SCC SCH PHYLLIS 6104

AUTO POWER PLUS 133B ET
AUTO CALLIE 403D ET
AUTO REBECA 292S

SCC TRADITION OF 24
FCF PROVEN QUEEN 419
SILVEIRAS STYLE 9303
SCC PHYLLIS 052
EXAR DENVER 2002B
EF YADDA YADDA 809Y
LESF ASPHALT 9N
EXLR REBECA 1019P

	CED	BW	WW	YW	MA	CM	SC	DC	CW	RE	YG	MS	\$TPI
EPD	10	3.6	77	123	18	6	1.1	12	43	.38	-.01	-.11	84.83
Rank	60	95	25	25	>95	55	25	65	35	90	85	>95	85

ACT. BW: 83

RETAINING 50% EMBRYO INTEREST, AFTER SHOW CAREER

Sired by Good Times and from the powerful Callie donor, Nora combines muscle shape and brood cow dimension with a refined, show-ready look. She is deep-bodied and practical in her design, yet still feminine and smooth-patterned enough to excel in the ring. With Good Times' balance and Callie's proven productivity, this female has the pedigree and phenotype to succeed in both arenas.



STAG GOOD TIMES 201
SIRE OF LOTS 10 & 11

11 Navy

CELL 5007N ET

1/3/25//LIM-FLEX(31/27.5)//HOMOPLD(P-1)//HOMOBK(P-1)//LFF3467472

SCC SCH 24 KARAT 838
STAG GOOD TIMES 201 ET
SCC SCH PHYLLIS 6104

AUTO POWER PLUS 133B ET
AUTO CALLIE 403D ET
AUTO REBECA 292S

SCC TRADITION OF 24
FCF PROVEN QUEEN 419
SILVEIRAS STYLE 9303
SCC PHYLLIS 052
EXAR DENVER 2002B
EF YADDA YADDA 809Y
LESF ASPHALT 9N
EXLR REBECA 1019P

	CED	BW	WW	YW	MA	CM	SC	DC	CW	RE	YG	MS	\$TPI
EPD	13	1.5	69	107	18	8	1.1	11	32	.34	.02	.05	70.28
Rank	20	65	55	60	>95	20	25	80	75	90	90	85	>95

ACT. BW: 61

Navy is the kind of female that reads big and classy from a distance — wide through the heart, thick behind, yet refined and feminine where it counts. She moves with a long, effortless stride and ties together depth of body with a clean, show-ready front. Sired by STAG Good Times 201 ET and out of the prolific AUTO CALLIE 403D ET, Navy brings proven performance and elite maternal power together in one eye-catching package — a legitimate show prospect that will also make a high-value brood cow.





3RD OVERALL DIV. 3 FEMALE
2025 NATIONAL JR LIMOUSIN SHOW
EXHIBITED BY THE BOOK FAMILY
MATERNAL SIB TO LOT 12

12 Naomi

CELL 5010N ET

1/4/25 // PB(89/77.7) // HOMO PLD // HET BLK // NPF3467465

AUTO LUCKY STRIKE 118B
AUTO LUCKY GUY 140D ET
AUTO REBECA 479A

DHVO DEUCE 132R
CELL 5154C ET
SENNETT HEATHER 448P

LH U HAUL 135U
AUTO LUCKIE 246W
MAGS XYLOPOLIST
AUTO REBECA 292S
GPFF BLAQUE RULON
AMY JO DHAN 20L
EXLR MODERATOR 053M
SENNETT CINNAMON 802H

	CED	BW	WW	YW	MA	CM	SC	DC	CW	RE	YG	MS	\$TPI
EPD	10	4.1	82	128	25	5	0.8	11	43	1.13	-.41	-.05	111.48
Rank	50	95	10	10	50	65	20	75	20	25	55	30	35

ACT. BW: 68

Naomi is a striking heifer that balances a big-bodied, maternal build with the style and presence needed to excel in the show ring. She offers sweep through her rib, a level top, and a feminine front end that ties it all together. Naomi is the kind that will compete hard now, then transition seamlessly into a foundation female with lasting influence. Her maternal sibs include Book's 3rd Overall in Division 3 at Junior Nationals and Waldon's 3rd Overall at the 2018 Junior Nationals, further proving the power and consistency in this mating.



RESERVE GRAND LIMOUSIN FEMALE
2025 NATIONAL WESTERN
EXHIBITED BY THE WILKINS FAMILY
MATERNAL SIB TO LOT 13

13 Nina

CELL 5012N ET

1/5/25 // PB(90/78.8) // HET PLD // HET BLK // NPF3467464

MAGS XYLOID
ELCX KINGS LANDING 599 D ET
WLR PRADA

DHVO DEUCE 132R
CELL 5154C ET
SENNETT HEATHER 448P

DHVO DEUCE 132R
BOHI RHONDA 314R
MAGSWL USUAL SUSPECT 538U
AUTO REBECA 292S
GPFF BLAQUE RULON
AMY JO DHAN 20L
EXLR MODERATOR 053M
SENNETT CINNAMON 802H

	CED	BW	WW	YW	MA	CM	SC	DC	CW	RE	YG	MS	\$TPI
EPD	8	3.0	65	98	27	4	0.8	11	26	.96	-.42	-.24	77.51
Rank	70	85	55	55	30	80	30	75	65	60	50	80	90

ACT. BW: 83

Here is a full sib to Josie Wilkin's Reserve Champion Purebred at the NWSS. Nina is the kind of heifer that demands attention with her balance and look. She's smooth through her shoulder, level over her hip, and elegant up front — yet still carries enough base width and rib to stand out among her contemporaries. With Kings Landing on the top side and the powerful CELL 5154C ET on the bottom, Nina blends eye appeal with a pedigree built for long-term success. A show prospect today and a cornerstone cow tomorrow.





LLJB ABSOLUTE STYLE 3056A
DAM OF LOT 14

14 Noah

CELL 5024N ET

1/26/25//LIM-FLEX(64/57.4)//HOMOPLD(P-2)//HET BLK//LFF3467456

AUTO LUCKY STRIKE 118B
AUTO LUCKY GUY 140D ET
AUTO REBECA 479A

SILVEIRAS STYLE 9303
LLJB ABSOLUTE STYLE 3056A
MAGS WASSAIL

LH U HAUL 135U
AUTO LUCKIE 246W
MAGS XYLOPOLIST
AUTO REBECA 292S
GAMBLES HOT ROD
SILVEIRAS ELBA 2520
DHVO DEUCE 132R
MAGS MANDA

	CED	BW	WW	YW	MA	CM	SC	DC	CW	RE	YG	MS	\$TPI
EPD 14	-0.8	59	94	21	8	0.7	6	25	.15	-.08	.23	79.11	
Rank 10	15	90	85	85	20	80	>95	90	>95	65	50	90	
ACT. BW: 70													

This Lucky Guy x Absolute Style daughter has that high-end look that turns heads. Noah is long and level in her design, with a smooth shoulder and refined, attractive front end. She combines depth of body and center rib with a feminine outline, giving her both the power to compete and the elegance judges reward. Backed by the stylish and productive Absolute Style cow family, Noah has the pedigree and phenotype to shine in the show ring and later make a brood cow you'll want to build around. Proof is in the pedigree!



4TH OVERALL LIM-FLEX FEMALE
2025 EASTERN REGIONAL LIMOUSIN SHOW
EXHIBITED BY THE BYERS FAMILY
FULL SIB TO LOT 15

15 Nancy

CELL 5032N ET

2/1/25//LIM-FLEX(65/58.3)//HOMOPLD(P-1)//HOMOBLK(P-1)//LFF3467461

MAGS XYLOID
ELCX KINGS LANDING 599 D ET
WLR PRADA

DHIL COLT 5793C
MAGS GRETE 288G
MAGS BATHSHEBA

DHVO DEUCE 132R
BOHI RHONDA 314R
MAGSWL USUAL SUSPECT 538U
AUTO REBECA 292S
PVF INSIGHT 0129
PBR5 TOUCH ME GENTLY 798T
MAGS YIP
EXG E839 1407 M175 LS

	CED	BW	WW	YW	MA	CM	SC	DC	CW	RE	YG	MS	\$TPI
EPD	8	3.2	71	116	24	4	0.6	13	43	.47	-.04	.17	99.29
Rank	85	95	45	40	60	85	85	50	35	75	75	60	55
ACT. BW: 88													

Nancy is a daughter of the popular Kings Landing out of the beautifully made MAGS Grete 288G — and she puts that pedigree to work. She's big-bodied and soft through her middle, yet keeps a clean, feminine front and a striking profile from the side. Square at the ground and sound on the move, Nancy combines the proven look of her sire group with the maternal strength of her dam. She's the kind that will compete with confidence now and later produce the kind of females that carry a program forward.





ELCX HIGH TIME 065H
SIRE OF LOT 16

16 Nixie

CELL 5039N ET

2/6/25//LIM-FLEX(60/53.9)//HOMOPLD(T)//HOMOBLK(P-3)//LFF3437314

ELCX KINGS LANDING 599 D ET
ELCX HIGH TIME 065H ET
ELCX ELEVATE 684E ET

SSTO BEST BET 456B ET
CELL 9083G
PBR5 676D ET

MAGS XYLOID
WLR PRADA
EF XCESSIVE FORCE
DFLC HBHPC 1S
S A V HARVESTOR 0338
ELCX TWILIGHT 114X
MAGS AVIATOR
AUTO AJAY 206A

Nixie is the kind of heifer that blends eye appeal with function. Sired by High Time and backed by the productive CELL 9083G female, she's long and level in her design, with a smooth front and the kind of balance that makes her hard to fault. She's sound at the ground, deep through her center body, and still refined and feminine through her front one-third. Nixie offers the look to stand out in the show ring while carrying the pedigree strength to develop into a high-value breeding piece.

	CED	BW	WW	YW	MA	CM	SC	DC	CW	RE	YG	MS	\$TPI
EPD	12	0.3	55	84	23	8	1.1	14	15	.26	-.04	.25	52.43
Rank	30	35	95	95	70	20	35	35	>95	95	75	45	>95
ACT. BW: 71													



CONLEY LEAD THE WAY 0738
SIRE OF LOT 17

17 Nikki

KVLN 5045N ET

2/9/25 // LIM-FLEX(37/33.6) // HET PLD // HOMO BLK (P-2) // LFF3467592

GATEWAY FOLLOW ME F163
CONLEY LEAD THE WAY 0738
EXAR PRINCESS 1637

DHVO DEUCE 132R
MAGS WALKIN
BOHI RED ROBIN 282R

C&C MCKINLEY 3000 EXAR
DUNK-W MAXINE HR 505C
S&R ROUNDTABLE J328
EXAR PRINCESS 5391
GPFF BLAQUE RULON
AMY JO DHAN 20L
CONNEALY LEAD ON
MAGS MANUELA

	CED	BW	WW	YW	MA	CM	SC	DC	CW	RE	YG	MS	\$TPI
EPD	9	2.7	78	104	24	6	---	12	44	.70	-.07	.28	99.51
Rank	75	85	25	65	60	55	---	65	35	40	65	40	55

ACT. BW: 82

Nikki is a flashy Conley Lead The Way daughter that has all the right pieces to be a contender. She's sleek and attractive through her front one-third, ties into a bold rib cage, and carries plenty of dimension down her top and hip. Backed by the MAGS Walkin cow, Nikki blends Angus influence with Limousin style, giving her a look that's both elegant and competitive. She's the kind that can catch a judge's eye on the move and later go on to raise the next generation of high-end show prospects.





TASF CROWN ROYAL 960C
MATERNAL GREAT-GRANDSIRE OF LOT 18

18 Norma

CELL 5065N

2/20/25//LIM-FLEX(67/59.3)//HOMOPLD(P-3)//HOMOBK(T)//LFF3437333

CELL ENVISION 7023E
COLE HOMERUN 51H ET
COLE MISS XRATED 354A

LVLS FULL DUTY 2201F
CELL 1532J
TASF FRESH BREATH 250F

AHCC BARN BURNER B907
PBRs ZSA ZSA 246Z
MRL X-RATED 014X
COLE MISS PRODUCTION 874U
AUTO HEAVY DUTY 174A
LVLS DARLA 2206D
TASF CROWN ROYAL 960C ET
TASF BREATHTAKER 825B

	CED	BW	WW	YW	MA	CM	SC	DC	CW	RE	YG	MS	\$TPI
EPD	8	3.9	70	113	30	4	1.6	10	56	.84	-.20	.24	136.17
Rank	85	>95	50	45	15	85	3	90	10	25	30	45	10

ACT. BW: 74

Norma is a powerful COLE Homerun daughter that reads with substance and presence from every angle. She's bold in her rib shape, wide-based, and carries extra muscle dimension, yet remains attractive through her front end with the feminine look of a true show prospect. Out of the young and promising CELL 1532J female, Norma ties fresh pedigree strength to a striking phenotype. She's the kind that offers both backdrop appeal and long-term value in the cow herd.



19 Novi

CELL 5074N

2/24/25 // LIM-FLEX(56/50.4) // HET PLD (T) // HOMO BLK (P-2) // LFF3437422

FWLY CAN DO
CELL LASTING IMPRESSION 3019L ET
SSTO FANCY 8865F ET

SSTO BEST BET 456B ET
MAGS GOOD GAL 271G
MAGS CUSTICA

RLBH AIR FORCE ONE
CLLL CRYSTAL 334W
COLBURN PRIMO 5153
RIVERSTONE CHARMED
S A V HARVESTOR 0338
ELCX TWILIGHT 114X
MAGS YIP
MAGS USTICA

	CED	BW	WW	YW	MA	CM	SC	DC	CW	RE	YG	MS	\$TPI
EPD	8	3.9	73	114	25	4	0.8	14	40	.49	.04	.06	77.11
Rank	85	>95	40	45	50	85	55	35	45	75	90	80	95

ACT. BW: 81

A striking show heifer prospect with a smooth, feminine front, excellent rib shape, and ideal structural integrity. Sired by CELL Lasting Impression 3019L ET, known for producing functional, show-ring champions, and out of MAGS Good Gal 271G, a dam with superior body capacity and udder quality. With her combination of eye appeal and genetic strength, Novi 5074N is a top contender for the show ring and a future donor prospect.



20 Neon

KQLL 5085N

3/1/25 // LIM-FLEX(53/48.3) // HOMO PLD (P-2) // HOMO BLK (T) // LFF3437349

TASF CROWN ROYAL 960C ET
TASF HEINEKEN 405H ET
PLEASANT VALLEY ELSA 1439

CJSL CREED 5042C
CELL 9429G
MAGS YIELDED

DHVO DEUCE 132R
TASF WHISKEY LULLABY 357W
EXAR CLASSEN 1422B
CHERRY KNOLL ELSA 8014
MAGS AVIATOR
CJSL 2090Z
MAGS PAYDAY
AUTO MS NEW DESIGN 827P

	CED	BW	WW	YW	MA	CM	SC	DC	CW	RE	YG	MS	\$TPI
EPD	5	6.2	82	133	16	4	0.4	13	45	.77	-.09	.14	103.58
Rank	>95	>95	15	15	>95	85	95	50	30	30	60	65	50

ACT. BW: 89

A stylish heifer with excellent depth, balance, and a wide, square base. Sired by TASF Heineken 405H ET, a powerful bull known for producing high-quality, structurally sound progeny with impressive muscle shape. Her dam, CELL 9429G, adds extra femininity and body capacity to the equation, making Neon 5085N a standout with both phenotypic appeal and genetic power.





CELL LASTING IMPRESSION 3019L
SIRE OF LOT 21

21 Nicole

CELL 5091N

3/3/25//LIM-FLEX(57/51.4)//HOMOPLD(T)//HOMOBLK(P-3)//LFF3437354

FWLY CAN DO
CELL LASTING IMPRESSION 3019L ET
SSTO FANCY 8865F ET

MAGS AVIATOR
CELL 7009E
SSTO TIME TO SHINE 7857T

RLBH AIR FORCE ONE
CLLL CRYSTAL 334W
COLBURN PRIMO 5153
RIVERSTONE CHARMED
MAGS WINSTON
MAGS XTRA REST
JCL LODESTAR 27L
C R C C ERICA 3031N

	CED	BW	WW	YW	MA	CM	SC	DC	CW	RE	YG	MS	\$TPI
EPD	10	3.7	73	114	26	4	0.5	15	52	.77	-.04	.07	103.25
Rank	60	95	40	45	40	85	85	20	15	30	75	80	50

ACT. BW: 84

The kind of female that turns heads in and out of the show ring. She combines an attractive, feminine front end with the body depth, balance, and structural integrity that define elite show heifers. Sound on the move, soft in her rib, and sleek in her design, she represents the style and quality that breeders chase. Sired by the exciting young sire CELL Lasting Impression 3019L ET, and backed by the proven CELL 7009E cow family, Nicole blends fresh pedigree strength with the look of a future donor in the making.



22 Nina

CELL 5098N ET

3/5/25//LIM-FLEX(68/60.7)//HOMOPLD(P-2)//HOMOBK(P-3)//LFF3490009

TASF CROWN ROYAL 960C ET
KLS SULL CHARMER ET
RIVERSTONE CHARMED

S A V BRAND NAME 9115
AUTO CHAPERALL 406C ET
AUTO REBECA 292S

DHVO DEUCE 132R
TASF WHISKEY LULLABY 357W
TMCK DURHAM WHEAT 6030X
HSF YOUR FANTASY
S A V BISMARCK 5682
S A V BLACKCAP MAY 5530
LESF ASPHALT 9N
EXLR REBECA 1019P

	CED	BW	WW	YW	MA	CM	SC	DC	CW	RE	YG	MS	\$TPI
EPD	9	3.2	73	108	22	5	1.0	11	24	.55	-.21	-.09	70.64
Rank	75	95	40	60	80	70	35	80	95	65	30	>95	>95
ACT. BW: 86													

A female that checks all the boxes. She is attractive through her front one-third, bold in her rib shape, and level in her hip design, all while standing down on a correct, flexible skeleton. Her pedigree only strengthens the package—sired by the popular KLS SULL Charmer ET, a bull known for transmitting eye appeal and structural integrity and backed by the productive AUTO Chaperall 406C ET cow, Nina brings together a blend of proven show ring influence and maternal power.

23 Norene

CELL 5097N ET

3/5/25//LIM-FLEX(68/60.7)//HOMOPLD(P-2)//HOMOBK(P-3)//LFF3490008

TASF CROWN ROYAL 960C ET
KLS SULL CHARMER ET
RIVERSTONE CHARMED

S A V BRAND NAME 9115
AUTO CHAPERALL 406C ET
AUTO REBECA 292S

DHVO DEUCE 132R
TASF WHISKEY LULLABY 357W
TMCK DURHAM WHEAT 6030X
HSF YOUR FANTASY
S A V BISMARCK 5682
S A V BLACKCAP MAY 5530
LESF ASPHALT 9N
EXLR REBECA 1019P

	CED	BW	WW	YW	MA	CM	SC	DC	CW	RE	YG	MS	\$TPI
EPD	9	3.2	73	108	22	5	1.0	11	24	.55	-.21	-.09	70.64
Rank	75	95	40	60	80	70	35	80	95	65	30	>95	>95
ACT. BW: 78													

The kind of balance and design that give serious long-term potential. She's smooth through her shoulder, elegant in her front, and blends that femininity with extra body dimension and power from behind. A full sib to several of the most eye-catching females in this offering, Norene is another strong representative of the KLS SULL Charmer ET x AUTO Chaperall 406C ET mating—a cross that continues to generate cattle with show ring look and donor cow upside.





CELL KOOL 2043K
DAM OF LOT 24

24 Nadia

KQLL 5103N ET

3/6/25 // LIM-FLEX(39/35.1) // HOMO PLD // HOMO BLK (P-2) // LFF3467459

PVF INSIGHT 0129
BNWZ DIGNITY 8017
CCC SARA'S DREAM 5116

CJSL DAUNTLESS 6257D ET
CELL KOOL 2043K ET
RIVERSTONE CHARMED

S A V BRILLIANCE 8077
PVF MISSIE 790
DAMERON FIRST CLASS
SILVEIRAS SARAS DREAM 1339
MAGS ZODIAC
LLJB ABSOLUTE STYLE 3056A
TMCK DURHAM WHEAT 6030X
HSF YOUR FANTASY

	CED	BW	WW	YW	MA	CM	SC	DC	CW	RE	YG	MS	\$TPI
EPD	9	1.3	75	109	23	5	0.9	14	42	.40	.02	.31	101.75
Rank	75	60	35	55	70	70	55	35	40	85	90	35	55
ACT. BW: 88													

Nadia is built with the presence and quality that grab attention from every angle. She's clean through her front, long-spined, and balances it all with the rib shape and structural integrity to stand the test of time. Sired by the high-performance and eye-appealing BNWZ Dignity 8017, and out of CELL Kool 2043K ET, a female stemming from one of the most recognizable and productive cow families at Linhart, Nadia ties together genetic power and the kind of striking phenotype that make for great success.



25 Nessa

CELL 5105N ET

3/6/25 // LIM-FLEX(61/54.5) // HOMO PLD // HOMO BLK (P-1) // LFF3467458

AUTO LUCKY STRIKE 118B
AUTO LUCKY GUY 140D ET
AUTO REBECA 479A

MAGS ALI
CELL FASCINATION 8231F ET
LLJB ABSOLUTE STYLE 3056A

LH U HAUL 135U
AUTO LUCKIE 246W
MAGS XYLOPOLIST
AUTO REBECA 292S
CONNEALY CONSENSUS 7229
MAGS YOKO
SILVEIRAS STYLE 9303
MAGS WASSAIL

	CED	BW	WW	YW	MA	CM	SC	DC	CW	RE	YG	MS	\$TPI
EPD	10	1.0	72	110	23	6	1.1	12	41	.47	-.08	.28	103.13
Rank	60	50	45	55	70	55	25	65	45	75	65	40	50
ACT. BW: 68													

A smooth-made, attractive-fronted female with the kind of balance and structure that make her an easy one to appreciate. Sired by AUTO Lucky Guy 140D ET and backed by CELL Fascination 8231F ET, she ties together an appealing look with a solid genetic base. This female is a maternal sib to Kyle's 5th Overall Female at the 2023 Winter Preview and the \$105,000 that sold to Sullivan's of Dunlap, IA.



26 Nila

CELL 5108N

3/7/25 // LIM-FLEX(50/44.9) // HOMO PLD (P-3) // HOMO BLK (P-1) // LFF3437362

TASF CROWN ROYAL 960C ET
TASF HEINEKEN 405H ET
PLEASANT VALLEY ELSA 1439

PVF INSIGHT 0129
CELL 7224E ET
MAGS WRIGLEY

DHVO DEUCE 132R
TASF WHISKEY LULLABY 357W
EXAR CLASSEN 1422B
CHERRY KNOLL ELSA 8014
S A V BRILLIANCE 8077
PVF MISSIE 790
MAGS SASQUATCH
BOHI REJOICE 308R

	CED	BW	WW	YW	MA	CM	SC	DC	CW	RE	YG	MS	\$TPI
EPD	6	1.2	58	94	19	4	0.7	7	23	.50	-.18	.11	72.02
Rank	>95	55	90	85	95	85	70	>95	95	70	35	70	95
ACT. BW: 74													

A neat-patterned, eye-catching female that's attractive up front and sound on the move. She's sired by TASF Heineken 405H ET and out of CELL 7224E ET, bringing together a practical and proven pedigree.





5TH OVERALL FEMALE
2023 CHILLICOTHE WINTER PREVIEW
FULL SIB TO LOTS 25 & 27

27 *Nia*

CELL 5117N ET

3/8/25 // LIM-FLEX(61/54.5) // HOMO PLD // HOMO BLK (P-1) // LFF3467466

AUTO LUCKY STRIKE 118B
AUTO LUCKY GUY 140D ET
AUTO REBECA 479A

MAGS ALI
CELL FASCINATION 8231F ET
LLJB ABSOLUTE STYLE 3056A

LH U HAUL 135U
AUTO LUCKIE 246W
MAGS XYLOPOLIST
AUTO REBECA 292S
CONNEALY CONSENSUS 7229
MAGS YOKO
SILVEIRAS STYLE 9303
MAGS WASSAIL

A smooth-made Lucky Guy daughter that offers a balanced look with femininity and structural correctness. Out of CELL Fascination 8231F ET, she ties in cow family strength with an attractive design. Nia has the maternal sibs to prove her worth, including Kyle Linhart's 5th Overall Lim-Flex at the Winter Preview and a maternal sib that sold to Sullivan's of Dunlap, IA.

	CED	BW	WW	YW	MA	CM	SC	DC	CW	RE	YG	MS	\$TPI
EPD	11	1.4	69	108	23	6	1.1	10	32	.56	-.16	.16	84.53
Rank	45	60	55	60	70	55	25	90	75	60	40	65	85
ACT. BW: 81													



28 Nira

CELL 5121N ET

3/11/25 // LIM-FLEX(51/46.2) // HOMO PLD // HOMO BLK // LFF3467468

FWLY CAN DO
CELL LASTING IMPRESSION 3019L ET
SSTO FANCY 8865F ET

MAGS ALI
MAGS HANKY PANKY 1625H ET
LLJB ABSOLUTE STYLE 3056A

RLBH AIR FORCE ONE
CLLL CRYSTAL 334W
COLBURN PRIMO 5153
RIVERSTONE CHARMED
CONNEALY CONSENSUS 7229
MAGS YOKO
SILVEIRAS STYLE 9303
MAGS WASSAIL

	CED	BW	WW	YW	MA	CM	SC	DC	CW	RE	YG	MS	\$TPI
EPD	11	3.4	68	102	25	6	1.3	14	51	.75	-.05	-.04	110.15
Rank	45	95	60	70	50	55	20	35	15	35	75	95	35
ACT. BW: 81													

Nira is a feminine, well-balanced female that's clean in her lines and good on her feet and legs. She's sired by CELL Lasting Impression 3019L ET and backed by MAGS Hanky Panky 1625H, giving her a fresh pedigree with plenty of look.



29 Nell

CELL 5123N

3/14/25 // LIM-FLEX(52/46.5) // HOMO PLD (T) // HOMO BLK (P-3) // LFF3437370

TASF CROWN ROYAL 960C ET
TASF HEINEKEN 405H ET
PLEASANT VALLEY ELSA 1439

MAGS AVIATOR
CELL 9049G
MAGS BURLESQUE

DHVO DEUCE 132R
TASF WHISKEY LULLABY 357W
EXAR CLASSEN 1422B
CHERRY KNOLL ELSA 8014
MAGS WINSTON
MAGS XTRA REST
MAGS Y-AXIS
MAGS TOTSI

	CED	BW	WW	YW	MA	CM	SC	DC	CW	RE	YG	MS	\$TPI
EPD	8	3.2	66	103	27	5	0.4	12	33	.61	-.09	.23	88.73
Rank	85	95	65	70	35	70	95	65	70	55	60	50	80
ACT. BW: 90													

A neat-fronted Heineken daughter that offers eye appeal and balance in a practical package. Out of CELL 9049G, she combines structural correctness with a functional pedigree base.





30 Nevaeh

CELL 5138N

4/1/25 // LIM-FLEX(54/48.9) // HOMO PLD // HOMO BLK // LFF3437371

FWLY CAN DO
CELL LASTING IMPRESSION 3019L ET
SSTO FANCY 8865F ET

DHIL COLT 5793C
MAGS GRETE 288G
MAGS BATHSHEBA

RLBH AIR FORCE ONE
CLLL CRYSTAL 334W
COLBURN PRIMO 5153
RIVERSTONE CHARMED
PVF INSIGHT 0129
PBRS TOUCH ME GENTLY 798T
MAGS YIP
EXG E839 1407 M175 LS

	CED	BW	WW	YW	MA	CM	SC	DC	CW	RE	YG	MS	\$TPI
EPD	7	5.0	79	130	24	3	.75	12	55	.63	.02	.04	105.42
Rank	95	>95	20	15	60	95	70	65	10	50	90	85	
ACT. BW: 85													

Nevaeh is a feminine-made female that's attractive through her front end and level in her design. She's a daughter of CELL Lasting Impression 3019L ET and from MAGS Genome 1032G ET, blending eye appeal with a dependable pedigree.



31 Naya

CELL 5132N

3/20/25 // LIM-FLEX(73/63.6) // HOMO PLD (T) // HOMO BLK (T) // LFF3437377

CELL ENVISION 7023E
COLE HOMERUN 51H ET
COLE MISS XRATED 354A

LVLS BANK ACCOUNT 8116B
CELL1459J ET
AUTO DANA 265D ET

AHCC BARN BURNER B907
PBRS ZSA ZSA 246Z
MRL X-RATED 014X
COLE MISS PRODUCTION 874U
MAGS WAZOWSKI
LVLS WILMA 8116W
MAGS AVIATOR
AUTO AJAY 206A

	CED	BW	WW	YW	MA	CM	SC	DC	CW	RE	YG	MS	\$TPI
EPD	10	2.0	76	125	26	6	1.0	13	55	.83	-.13	.37	133.05
Rank	60	75	30	25	40	55	45	50	10	25	50	25	10
ACT. BW: 68													

A sound-made Homerun daughter that's clean in her lines and balanced in her look. Out of CELL 1459J ET, she offers structural integrity and an attractive overall design.



32 Nona

CELL 5158N ET

5/4/25 // LIM-FLEX(71/63.5) // HOMO PLD // HOMO BLK (P-1) // LFF3467460

DHVO DEUCE 132R
TASF CROWN ROYAL 960C ET
 TASF WHISKEY LULLABY 357W

MAGS ALI
CELL FASCINATION 8231F ET
 LLJB ABSOLUTE STYLE 3056A

GPFF BLAQUE RULON
 AMY JO DHAN 20L
 EXLR NASDAQ 380R
 TMCK MISS THICK 37T
 CONNEALY CONSENSUS 7229
 MAGS YOKO
 SILVEIRAS STYLE 9303
 MAGS WASSAIL

	CED	BW	WW	YW	MA	CM	SC	DC	CW	RE	YG	MS	\$TPI
EPD	7	3.0	76	115	24	4	1.3	8	48	.89	-.22	-.08	103.03
Rank	95	90	30	40	60	85	20	>95	25	20	25	>95	50
ACT. BW: 90													

A practical, good-structured female with balance and eye appeal. Sired by TASF Crown Royal 960C ET and out of CELL Fascination 8231F ET, she ties proven genetics to a functional design. Those proven genetics include maternal sibs like Kyle Linhart's 5th Overall Lim-Flex at the Winter Preview and the maternal sib that sold for \$105,000 to Sullivan's of Dunlap, LA.



33 Nylah

KQLL 5156N

5/4/25 // LIM-FLEX(60/54.4) // HOMO PLD (P-2) // HOMO BLK (P-2) // LFF3377030

ELCX KINGS LANDING 599 D ET
ELCX HIGH TIME 065H ET
 ELCX ELEVATE 684E ET

BNWZ DIGNITY 8017
CELL LADY 3165L ET
 RIVERSTONE CHARMED

MAGS XYLOID
 WLR PRADA
 EF XCESSIVE FORCE
 DFLC HBHPC 1S
 PVF INSIGHT 0129
 CCC SARA'S DREAM 5116
 TMCK DURHAM WHEAT 6030X
 HSF YOUR FANTASY

	CED	BW	WW	YW	MA	CM	SC	DC	CW	RE	YG	MS	\$TPI
EPD	11	-1.0	51	78	24	6	1.0	15	27	.58	-.14	.11	88.02
Rank	45	15	>95	>95	60	55	35	20	90	60	45	70	80
ACT. BW: 64													

Nylah is a long-bodied, attractive-fronted female that's correct on the move and balanced from every angle. She's sired by ELCX High Time 065H ET and the first calf out of CELL Lady 3165L ET, Bertshe's Champion Lim-Flex Female at the NWSS, giving her a fresh genetic twist with style to match.





LA NORTON



THANK YOU TO THE SPONSORS WHO MADE THIS EVENT POSSIBLE

ATAK *California*

Logan Valley **MSA**

Rafter DP

365





CELL MIA 4019M ET
4TH OVERALL CHAMPION LIM-FLEX FEMALE
2025 NATIONAL JR LIMOUSIN SHOW
EXHIBITED BY THE TURNER FAMILY & WHITTINGTON CATTLE CO, FL
FULL SISTER TO LOT 34

34 Northern Charm

CELL 5100N ET

3/6/25 // LIM-FLEX(50/44.9) // HET PLD // HOMO BLK (P-1) // LFF3467467

PVF BLACKLIST 7077
PVF DLX KING PIN 0058
PVF LUCY 4189

TMCK DURHAM WHEAT 6030X
RIVERSTONE CHARMED
HSF YOUR FANTASY

PVF INSIGHT 0129
PVF BLACKBIRD 3070
C&C PRIORITY 1428B EXAR
THOMAS LUCY 7360
DHVO DEUCE 132R
MAGS STRAWBERRY PIE
MAGS WAR ADMIRAL
HSF TINKERBELL

	CED	BW	WW	YW	MA	CM	SC	DC	CW	RE	YG	MS	\$TPI
EPD	10	2.0	68	107	26	5	---	14	38	.77	-.10	.20	99.67
Rank	60	75	60	60	40	70	---	35	55	30	60	55	55
ACT. BW: 86													

SELLING 50% EMBRYO INTEREST, AFTER SHOW CAREER

The influence of Riverstone Charmed has defined a generation of champions, and in this King Pin daughter, that legacy takes on a fresh new chapter. Northern Charm is a heifer that stops you in your tracks: she is bold and dimensional through her rib cage, yet still elegant and extended through her front end, flowing into a side profile that is flawless from nose to tail. She combines raw power with undeniable refinement, the exact balance that makes elite show heifers and future donors. Northern Charm isn't just a pretty picture — she's the kind that can dominate in the ring today and then become the cornerstone of a donor pen tomorrow. Her maternal heritage is rock solid, and her design makes her the kind to raise cattle that move the needle in both banners and dollars. Her full sibs have already left their mark in the ring, including the Turner family's 4th Overall Lim-Flex Female at the 2025 NJLSC and Ruppert's Reserve Lim-Flex Female at the Heartland Regional Show. . From every angle, this female embodies quality, balance, and presence. From every angle, this female embodies quality, balance, and presence.



LOT 1 CARDI DAUGHTER SELLING



LOT 2 CARDI DAUGHTER SELLING



LOT 3 CARDI DAUGHTER SELLING

35 Flush

CELL CARDI 1403J ET

7/24/21//LIM-FLEX(50/44.9)//DBLPLD//HOMOBLK(P-1)//LFF2493874

GAMBLES HOT ROD
SILVEIRAS STYLE 9303
SILVEIRAS ELBA 2520

TMCK DURHAM WHEAT 6030X
RIVERSTONE CHARMED
HSF YOUR FANTASY

FAMOUS 7001
CHAMPION HILL LADY 703
TWIN VALLEY PRECISION E161
D A R ELBA 55
DHVO DEUCE 132R
MAGS STRAWBERRY PIE
MAGS WAR ADMIRAL
HSF TINKERBELL

	CED	BW	WW	YW	MA	CM	SC	DC	CW	RE	YG	MS	\$TPI
EPD	12	1.8	62	100	24	6	0.8	12	33	.38	.02	.12	81.01
Rank	30	70	65	60	55	55	55	55	55	80	90	65	80
ACT. BW: 80													

A female with substance—she offers a powerful combination of strong phenotype, show-ring success, and pedigree depth. She consistently produces daughters that compete at the top in Limousin and Lim-Flex shows. Multiple progeny out of Cardi have excelled in Bred & Owned classes in regional & national shows. On the genetic side, Cardi combines maternal excellence and show presence. Her daughters demonstrate eye appeal, correctness in structure, and balance front to back. Her pedigree and production indicate she is more than capable of transmitting both show-ring style and functional soundness. Because of this, the right to flush her represents a rare opportunity: to draw on her genetics repeatedly and multiply the potential she carries.

**GUARANTEE OF 6 EMBRYOS MAXIMUM OF 10.
BUYER SUPPLIES SEMEN ON BULL OF CHOICE
AND BUYER PAYS FLUSH EXPENSE**



GENETIC OPPORTUNITIES



DL HOSANNA 526
GRANDDAM OF LOTS 36A-D

DL *Leilani* 22L ET "DOLLY"

11/08/23 // PB(90/80.7) // DBL PLD // HOMO BLK (P-2) // NPF2800035

MAGS XYLOID

TASF CROWN ROYAL 960C

SIRE. **ELCX KINGS LANDING 599D**

DAM. **DL HOSANNA 526H ET**

WLR PRADA

RIVERSTONE CHARMED

	CED	BW	WW	YW	MA	CM	SC	DC	CW	RE	YG	MS	\$TPI
EPD	7	3.8	70	101	27	3	.60	13	30	.60	-.20	-.11	80.47
Rank	80	80	35	45	30	90	35	55	55	>95	>95	50	85

ACT. BW: 72

Dolly is the kind of female that makes you stop and take notice. She combines exceptional breed character with clean structure, feminine front one-third, strong rib shape, and the ideal balance through her top and hip. Sound on her feet and legs, she moves with confidence and exhibits the kind of look that commands respect in the show ring. She earned the title of Champion Overall Purebred Female at the 2025 NJLSC. Her pedigree only strengthens the package - descending from the proven Hosanna cow family, Dolly brings together genetics that consistently generate performance, eye appeal, and structural integrity. To invest in embryos from Dolly is to tie into a donor with both show-ring style and long-term breeding value, with the added flexibility of selecting from elite sires such as King Pin, Bristow, Can Do or Gold Buckle to match your program's goals.

BUYER'S CHOICE OF 3 EMBRYOS

36A *PVF DLX King Pin 0058*

36B *Conley Bristow 2317*

36C *FWLY Can Do*

36D *MAYC Gold Buckle 624G*

GENETIC OPPORTUNITIES



ELCX KINGS LANDING 599D
CHOICE SIRE OF LOTS 37A & 37B



PVF DLX KING PIN 0058
CHOICE SIRE OF LOTS 37A & 37B

CELL *Lady* 3165L

5/4/23 // LIM-FLEX(50/44.9) // HOMO PLD (T) // HOMO BLK (P-1) // LFF2605729

PVF INSIGHT 0129

TMCK DURHAM WHEAT 6030X

SIRE. **BNWZ DIGNITY 8017**

DAM. **RIVERSTONE CHARMED**

CCC SARA'S DREAM 5116

HSF YOUR FANTASY

	CED	BW	WW	YW	MA	CM	SC	DC	CW	RE	YG	MS	\$TPI
EPD	10	-0.6	59	80	26	5	1.0	11	40	.86	-17	.05	108.7
Rank	55	20	75	95	40	70	45	70	35	20	45	75	25

ACT. BW: 75

CELL Lady 3165L ET is a female whose genetics deliver both striking phenotype and proven performance. Sired by BNWZ Dignity 8017 and out of Riverstone Charmed, she has been developed and exhibited by Bevin Bertsche (Onida, SD) with considerable success, highlighted by her Grand Champion Lim-Flex title at the 2025 NWSS Junior Show. She is recognized as a "genetic masterpiece" around Linhart Limousin, she combines elite show ring appeal with a pedigree built for turning heads in the pasture. The embryos offered here give you the chance to tap into her winning pedigree and make your next banner-hanging show heifer.

BUYER'S CHOICE OF 3 EMBRYOS

37A *ELCX King's Landing 599D*

37B *PVF DLX King Pin 0058*

GENETIC OPPORTUNITIES



Morris



STAG GOOD TIMES
SIRE OF LOT 38A



CELL KEYSTONE 2221K
SIRE OF LOT 38B

AUTO *Callie* 403D

9/16/16 // LIM-FLEX(62/54.9) // HOMO PLD // HOMO BLK // LFF2120517

EXAR DENVER 2002B

LESF ASPHALT 9N

SIRE. **AUTO POWER PLUS 133B ET**

DAM. **AUTO REBECA 292S**

EF YADDA YADDA 809Y

EXLR REBECA 1019P

	CED	BW	WW	YW	MA	CM	SC	DC	CW	RE	YG	MS	\$TPI
EPD	11	4.2	70	118	12	8	1.3	9	34	.36	-.11	-.10	81.22
Rank	40	>95	35	25	>95	20	10	90	55	85	60	95	80

ACT. BW: 66

38A

Choice of Pregnancy

SIRED BY STAG GOOD TIMES
DUE FEBRUARY 2026

38B

Choice of Pregnancy

SIRED BY CELL KEYSTONE
DUE FEBRUARY 2026

Few opportunities rival the chance to tie into the AUTO Callie donor line, and this choice of pregnancy doubles down on genetic predictability and style. STAG Good Times injects power, bone, and look, while CELL Keystone continues to stamp out functional, eye-appealing progeny with structural integrity. AUTO Callie has already proven herself as a foundation female whose influence runs deep, making this mating a true banner-hanging prospect in the making. No matter your selection, the resulting calf is bred to be competitive in the showing and valuable in production.

GENETIC OPPORTUNITIES



AUTO LUCKY GUY 140D
SIRE OF LOT 39A EMBRYOS

39 Flush CELL KRUSH 2098K ET

3/1/22 // LIM-FLEX(53/47.6) // HOMO PLD (P-2) // RED // LFF2522203

MAGS APPLE JACK

SILVEIRAS STYLE 9303

SIRE. MAGS FIRESTONE 218F

DAM. LLJB ABSOLUTE STYLE 3056A

MAGS DAYSTAR

MAGS WASSAIL

	CED	BW	WW	YW	MA	CM	SC	DC	CW	RE	YG	MS	\$TPI
EPD	12	0.7	65	100	20	5	0.7	9	40	.31	-.04	.16	94.6
Rank	30	45	55	60	85	70	75	90	35	90	75	55	50

ACT. BW: 80

Krush couples an impressive phenotype with a proven pedigree, making her one of the most exciting young donors in the breed. A daughter of MAGS Firestone and the stylish LLJB Absolute Style, she first made her mark in the showring with her balance, structural integrity, and eye appeal that are hard to duplicate. Today, she's carrying that same quality into production, generating progeny that are already earning attention for their look and presence. Linhart Limousin is proud to offer the right to flush CELL KRUSH 2098K ET, giving you the chance to build the next generation of banner-caliber females from one of their most striking donors.

GUARANTEE OF 6 EMBRYOS MAXIMUM OF 10.
BUYER SUPPLIES SEMEN ON BULL OF CHOICE AND
BUYER PAYS FLUSH EXPENSE

39A 3 Embryos

AUTO LUCKY STRIKE 118B

MAGS FIRESTONE 218F

SIRE. AUTO LUCKY GUY 140D

DAM. CELL KRUSH 2098K ET

AUTO REBECA 179A

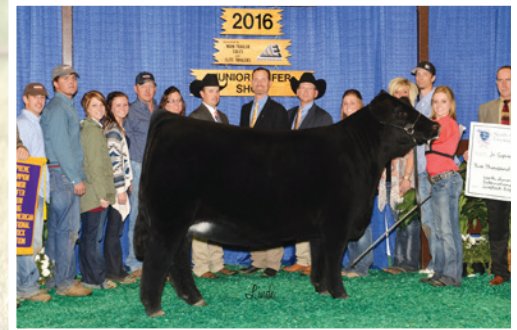
LLJB ABSOLUTE STYLE 3056A

	CED	BW	WW	YW	MA	CM	SC	DC	CW	RE	YG	MS	\$TPI
EPD	11	1.6	73	115	21	6	0.6	10	36	.61	-.17	.14	100.42

Here's a mating that stacks proven cow families and the kind of look today's show ring demands. AUTO Lucky Guy has quickly risen to fame for siring cattle with added body, bone, and structural quality while maintaining eye appeal. Matched with CELL Krush, the result is a genetic package built to make elite females. These three embryos represent an opportunity to blend two dominant lines and create the kind of heifers that can headline a show string and later anchor a donor program.



ELITE HERD SIRE PROSPECT



RIVERSTONE CHARMED
DAM OF LOT 40

SELLING POSSESSION & RETAINING 50% INTEREST

40th Next Generation

CELL 5014N ET

1/5/25 // PB(89/79.9) // HET PLD // HOMO BLK (P-1) // NPM3467473

AUTO LUCKY STRIKE 118B
AUTO LUCKY GUY 140D ET
AUTO REBECA 479A

TMCK DURHAM WHEAT 6030X
RIVERSTONE CHARMED
HSF YOUR FANTASY

LH U HAUL 135U
AUTO LUCKIE 246W
MAGS XYLOPOLIST
AUTO REBECA 292S
DHVO DEUCE 132R
MAGS STRAWBERRY PIE
MAGS WAR ADMIRAL
HSF TINKERBELL

	CED	BW	WW	YW	MA	CM	SC	DC	CW	RE	YG	MS	\$TPI
EPD	8	3.8	72	108	28	4	0.7	14	38	.86	-.26	-.30	87.69
Rank	70	95	30	30	25	80	35	40	35	80	95	90	80
ACT. BW: 87													

CELL 5014N ET represents everything the Limousin breed strives to produce — elite phenotype, a no-miss pedigree, and the kind of commanding presence that separates the great ones from the good ones. From every angle, he embodies herd sire quality: bold in his design, massive in his build, yet still refined and attractive through his front third. His structural integrity, muscle expression, and balance set him apart as one of the most complete young bulls to ever surface from the Linhart program. Backed by generations of proven maternal strength and sires that have consistently moved the breed forward, CELL 5014N ET is bred for both immediate showing appeal and long-term genetic influence. His pedigree is laced with predictability, combining the very best of the program's cornerstone donors with sires that are dominating both in production and in banners. Quite simply, he is the kind that programs can confidently build around. Opportunities like this are few and far between — the chance to tie into a bull of this caliber doesn't come around often. CELL 5014N ET is not just a sale lot; he's a program-defining investment.

The background is a collage of several photographs of people at what appears to be a horse-related event. The images are overlaid on a red background with a repeating damask or floral pattern. The photos show a man in overalls shaking hands with another man, a man holding a baby, a smiling woman, and a man in a cap. The text 'Thank You' is written in a large, white, cursive font across the center.

Thank You

We appreciate your support and interest in our breeding program. We take the people side of the business very seriously and never for granted, that's why producing a quality product and making sure our customers are satisfied has always been a top priority. Simply put, your attendance and participation in our sale event has humbled us, and we wish you many successes with your purchases.

Thank you for taking time to view the catalog and allowing us the opportunity to earn your business.



Affordable Success

31 FEMALES SOLD IN PAST 12 MONTHS
WERE GRAND OR RESERVE BREED
CHAMPION AT NATIONAL, STATE FAIR OR
JACKPOT SHOWS ACROSS THE COUNTRY





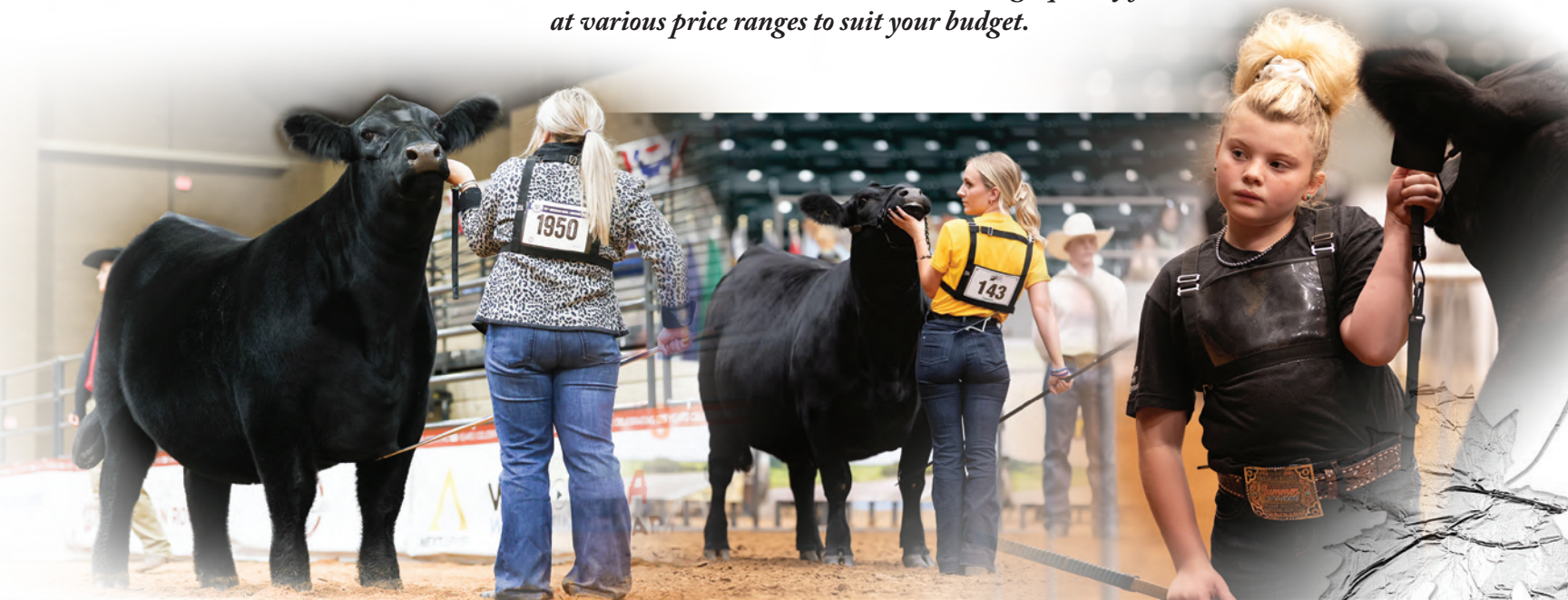
FALL HARVEST HISTORICAL COST BREAKDOWN

TOTAL OPEN HEIFERS SOLD

20%	\$10,000 & Above
39%	\$5,000-\$9,999
41%	\$3,000-\$4,999

We would like to take the time to reinforce to our fellow breeders and valued junior show families the opportunity of affordable success that can be found in our sale pens. Over the past several years, we have been extremely fortunate to have sold many females in EVERY price bracket below that have gone on to win championship banners at the local, regional and national levels. To illustrate our 'affordable success' mantra take a look at our historically price break averages.

Folks, make no mistake October 18 there will be several high quality females at various price ranges to suit your budget.



Sale Notes

This image shows a blank sheet of white paper with horizontal ruling lines. The lines are evenly spaced and run across the width of the page. There are no margins, text, or other markings on the paper.

Upcoming Events

LINHART LIMOUSIN ANNUAL BULL SALE

SATURDAY, MARCH 7, 2026

At the Linhart Sale Facility • Leon, Iowa
Offering 70 Registered Limousin & Lim-Flex Bulls

APRIL FOOL'S ONLINE GENETIC SALE

MONDAY, MARCH 30, 2026

Hosted by L365Auctions.com

DIVAS ONLINE SHOW HEIFER SALE

TUESDAY, APRIL 21, 2026

Hosted by SOnlineSales.com

*Sale
Averages*

NUMBER
OF LOTS

TOTAL

AVERAGE

_____	Open Heifers	_____	_____
_____	Genetic Lots	_____	_____
_____	Elite Herdsire Prospect	_____	_____
_____	GROSS	_____	_____





Marketing Management

MC MARKETING MANAGEMENT
648 WEST SAWGRASS TRAIL
DAKOTA DUNES, SD 57049

Catalog Design by: Monti West Design

LINHART LIMOUSIN

16th Annual



*Fall
Harvest*

ELITE FEMALE SALE

SATURDAY, OCTOBER 18, 2025

1 PM CST - LINHART SALE FACILITY, LEON, IA