



P BAR S

ALL **RED**

SPRING ONLINE SALE



P BARS

ALL RED

SPRING ONLINE SALE

Monday, 3.8.2021

www.Limousin365.com | 7:00 a.m. - 7:00 p.m. C.S.T.

PBARS
RANCH

Paul Sisemore, Owner
Manager, Eligen Elmore, 918.346.2438
11720 Overlook Drive, Sand Springs, OK 74063
elginpbars@yahoo.com • www.pbarsranch.com



SALE MANAGEMENT

Randall O. Ratliff, 615.330.2735
Randy@rrmktg.com



SALE CONSULTANT

Kiley McKinna, 402.350.3447
mcmarketingsales@aol.com

If you need assistance with your purchases or want to discuss the genetics selling than please feel free to contact R & R Marketing Company or MC Marketing as paid marketing agents for P Bar S Ranch, we take pride in the opportunity to work closely with this program. We can assist you with your phone order and/or handle your bid in the most confidential manner. Feel free to email, call or text and we will be more than happy to assist.

LOT 1 ... PBRs HARLEY 044

Red Angus Heifer | RAAA 4271823 | PBRs 044 | 03.01.2020



Here she is, folks! The daughter of Damar Trump C512 we've all been waiting for, PBRs Harley 044. Damar Trump C512, a son of Red Soo Line Power Eye 161X is dominating nationwide. He injects such a desirable function, strength in maternal power and real world doability. Her dam is Damar 3363 Cedar Quest A322, from the famous Cedar cow family and is sired by HXC Conquest 4405P. Her milk figure of 32 ranks in the top five percent of the breed. We admire this female's center dimension, natural body shape and impeccable running gears. We anticipate this female to be a showstopper desired by the big league programs and believe you'll certainly agree when you get your eyes on her!

RED SOO LINE POWER EYE 161X
DAMAR TRUMP C512

DAMAR OH BABY W168

HXC CONQUEST 4405P
DAMAR 3363 CEDER QUEST A322

BADLANDS PFFR CEDAR 3363

RED COCKBURN RIBEYE 308U

RED TR LYNN 301R

RED FINE LINE MULBERRY 26P

RED T-S OLIVIA 706P

BECKTON JULIAN GG B571

HXC ELLIE MAY MA638

RED BRYLOR NEW TREND 22

BADLANDS CEDAR 922

CED	14
BW	-2.4
WW	58
YW	94
MK	31
CEM	8
SC	-
DOC	-
YG	0.11
CW	22
REA	-0.03
MB	0.45
SMTI	-



A.I. 12.03.20 to DAMAR Redeeming C618

(RAAA3479851 - Brown JYJ Redemption Y1334 x
 Brown Ms Conquest Z7870). P.E. to J6 Jagger 120G

(RAAA4055256 - Six Mile & Co. Jagger 780A x JKC Berry Advance 36W).

This is a female that continues to impress us all. PBRs Glacier 9133 has an overwhelming presence with beautiful symmetry, flawless structure and unmatched body dimension and capacity. She is sired by performance giant Red Six Mile Cornerstone 509C, the impressive Red U-2 Reckoning 149A son. He has endured the true test of time and continues to generate offspring who command top dollar and are writing their own pages in the Red Angus history book. This female's dam is L83 Cherol 31B, a daughter of Six Mile Game Face 164Y. Her milk figure of 27 ranks in the top 33% of the breed. Take note of PBRs Glacier 9133 and her youthful appearance and beautiful silhouette.

CED	11
BW	-0.4
WW	58
YW	89
MK	27
CEM	8
SC	-
DOC	-
YG	0.08
CW	18
REA	-0.01
MB	0.28
SMTI	-

RED U-2 RECKONING 149A

RED SIXMILE CORNERSTONE 509C

RED SIX MILE TINA 180Z

SIX MILE GAME FACE 164Y

L83 CHEROL 31B

L83 CHEROK 280Z

RED U-2 RECON 192Y

RED U-2 ANEXA 271Y

SIX MILE WILD WEST 0913W

RED SHODEREE TINA 149N

VGW GAME PLAN 816

RED SIX MILE LAKOTO 35W

L83 ENTOURAGE

L83 CHEROK 203



RED TAYLOR'S COWBOY 43B
RED WILDMAN CIMARRON 605D
 RED WILDMAN MISS STOCKY 420B
 RED NORTHLINE IGNITION 125W
CRSL MISS ASPEN II
 PKS GOLDRÖBBER 836U

RED WILBAR COWBOY COUNTRY 90
 RED TAYLOR'S ROSALEE 3Y
 RED JENSEN SKY 611X
 RED WILDMAN MISS STOCKY 731T
 RED NORTHLINE REV 341R
 RED JAYDERNE NADINE 7N
 LJ3 JAVELIN N11
 MJ MS GOLDRÖBBER 16P

A.I. 12.03.20 to DAMAR Redeeming C618
 (RAAA3479851 - Brown JYJ Redemption Y1334 x
 Brown Ms Conquest Z7870). P.E. to J6 Jagger 120G
 (RAAA4055256 - Six Mile & Co. Jagger 780A x JKC Berry Advance 36W).

PBRAS Aspen 9124 is striking from the profile, strong in her top, level in her hip and combines structural soundness with such a unique and adequate build. Her average daily gain figure of 0.29 ranks in the eighth percentile of the breed, her yearling weight figure of 111 ranks in the 17th percentile, her milk figure of 28 ranks in the 20th percentile and her weaning weight figure of 64 ranks in the 31st percentile of the breed. She is a daughter of Red Wildman Cimarron 605D, the phenomenal Canadian outcross Red Angus sire. Her dam is a Red Northline Ignition 125W daughter, CRSL Miss Aspen II. What a powerful combination female who has a big future ahead and the extras to take you the distance!

CED	8
BW	3.5
WW	66
YW	113
MK	29
CEM	6
SC	-
DOC	-
YG	0.05
CW	30
REA	0.12
MB	0.29
SMIT	-



© Morris

FIRESTORM
PBRS DEUCE 6134
 5L FIREFLY 400-539
C-BAR EVOLUTION 107Y
CRSL MILADY
 CRSL BECKI

LRFM 004
 ORBITS RUBY
 5L SUMMIT 1145-6327
 5L FIREFLY 32-400
 TR COLT 45 UT806
 LGS ABBY 689S
 CRSL GOLDMASTER X74
 CRSL FANCY

A.I. 12.03.20 to DAMAR Redeeming C618
 (RAAA3479851 - Brown JYJ Redemption Y1334 x
 Brown Ms Conquest Z7870). P.E. to J6 Jagger 120G
 (RAAA4055256 - Six Mile & Co. Jagger 780A x JKC Berry Advance 36W).

PBRS Milady 9187 offers a unique blend of angularity through her front one third, body mass and cow power that makes her an ideal candidate for your donor lineup. She's attractive in her lines, loaded with body dimension and she's flexible off both ends of her skeleton when you get her in motion. This is a daughter of PBRS Deuce 6134, a son of PZC TMAS Firestorm 1800 out of 5L Firefly 400-539. He consistently sires females with look, dimension and maternal ability. Her dam is a daughter of C-Bar Evolution 107Y, the combination sire with calving ease, phenotypic superiority and numeric excellence. We are confident in this female's reproductive ability and anticipate the best is yet to come.

RED	12
BW	0.1
WW	57
YW	93
MK	26
CEM	7
SC	-
DOC	-
YG	0.06
CW	18
REA	-0.01
MB	0.20
SMTI	-

LOT 5 ... PBRs GABBY 9274G ET

50% Lim-Flex Heifer | LFF 2274593 | PBRs 9274 | 09.24.2019 | HP/ Red



Sire, MAGSWL Usual Suspect 538U



Dam, J6 Tempest B300

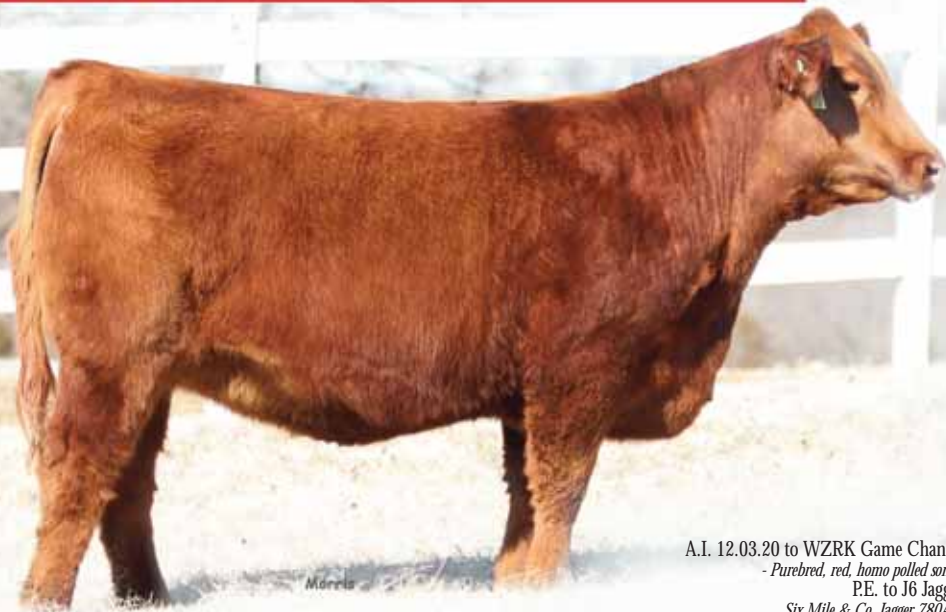
A.I. 12.03.20 to WZRK Game Changer 4015G (NPM2161929 - Purebred, red, homo polled son of HUNT Credentials 37C). P.E. to J6 Jagger 120G (RAAA4055256 - Six Mile & Co. Jagger 780A x JKC Berry Advance 36W).

As you look at the genetic fuel that powers these impressive four full siblings, you'll understand the value of predictability, longevity and cow power they bring to the table. She is a homozygous polled, 50% Lim-Flex female. Her birthweight figure of -1.1 ranks in the top 10% of the breed and her milk figure of 25 ranks in the top 15%. She is sired by the triple-crown winning purebred bull, MAGSWL Usual Suspect 538U. He will go down in history as one of the greatest purebred sires in the Limousin breed. He is the MAGS Sasquatch son from the great MAGS Phantoms Prize female. This female's dam is the highly productive J6 Tempest B300 female. She is a daughter of WEBR TC Card Shark 1015 and out of the infamous SLGN Stony's Tempest 778T female. This female has the added performance and phenotype to continue in her legendary ancestor's footsteps!

MAGS SASQUATCH
MAGSWL USUAL SUSPECT 538U
 MAGS PHANTOMS PRIZE
 WEBR TC CARD SHARK 1015
J6 TEMPEST B300
 SLGN STONY'S TEMPEST 778T

EXLR NEW GENERATION 071M
 MAGS FRUITFUL 487M
 GPFF BLAQUE RULON
 ALCM KOOK TUNES
 WEBR DOC HOLIDAY 2N
 PFFR MS NYACK 237
 SLGN REGULATOR 503R
 LCC STONY LA996

CED	10
BW	-0.8
WW	52
YW	77
MK	26
CEM	-
SC	-
DOC	9
YG	-0.23
CW	7
REA	0.51
MB	0.19
SMTI	54.52



Sire, MAGSWL Usual Suspect 538U



Dam, J6 Tempest B300

A.I. 12.03.20 to WZRK Game Changer 4015G (NPM2161929
 - Purebred, red, homo polled son of HUNT Credentials 37C).
 P.E. to J6 Jagger 120G (RAAA4055256 -
 Six Mile & Co. Jagger 780A x JKC Berry Advance 36W).

The possibilities are truly endless with this female. On the profile, PBRs Glo 9291G is powerful through her center body cavity, smooth and feminine in her lines and she has the overwhelming cow power to capture the most critical eye. She is a full sister to PBRs Gabby 9274G from the MAGSWL Usual Suspect 538U x J6 Tempest B300 mating. With this level of genetic influence, this female is destined for great success. She'll be 'glo-ing' for a long time with a high level of influence in someone's program, so be sure it's yours! Her milk figure of 25 ranks in the top 15% of the breed. She is homozygous polled and 50% Lim-Flex.

MAGS SASQUATCH
MAGSWL USUAL SUSPECT 538U
 MAGS PHANTOMS PRIZE
 WEBR TC CARD SHARK 1015
J6 TEMPEST B300
 SLGN STONY'S TEMPEST 778T

EXLR NEW GENERATION 071M
 MAGS FRUITFUL 487M
 GPFF BLAQUE RULON
 ALCM KOOK TUNES
 WEBR DOC HOLIDAY 2N
 PFFR MS NYACK 237
 SLGN REGULATOR 503R
 LCC STONY LA996

CEM	11
BW	1.2
WW	59
YW	94
MK	26
CEM	8
SC	-
DOC	-
YG	-0.18
CW	10
REA	0.56
MB	0.25
SMTI	58.60



Sire, MAGSWL Usual Suspect 538U



Dam, J6 Tempest B300

MAGS SASQUATCH
MAGSWL USUAL SUSPECT 538U
 MAGS PHANTOMS PRIZE
 WEBR TC CARD SHARK 1015
J6 TEMPEST B300
 SLGN STONY'S TEMPEST 778T

EXLR NEW GENERATION 071M
 MAGS FRUITFUL 487M
 GPFF BLAQUE RULON
 ALCM KOOK TUNES
 WEBR DOC HOLIDAY 2N
 PFFR MS NYACK 237
 SLGN REGULATOR 503R
 LCC STONY LA996

A.I. 12.03.20 to WZRK Game Changer 4015G
 (NPM2161929 - Purebred, red, homo polled son of HUNT Credentials 37C).
 P.E. to J6 Jagger 120G (RAAA4055256 - Six Mile & Co. Jagger 780A
 x JKC Berry Advance 36W).

These full sisters have truly exceeded our expectations from many directions, but it's their attractive build, cow power and neatness of lines that completely sets them apart. She is from the MAGSWL Usual Suspect 538U x J6 Tempest B300 mating. Her milk figure of 25 ranks in the top 15% of the breed. She is homozygous polled and 50% Lim-Flex. This one is loaded with generating potential at a high caliber!

CED	11
BW	0.9
WW	63
YW	99
MK	26
CEM	57
SC	-
DOC	12
YG	-0.18
CW	21
REA	0.51
MB	0.14
SMTI	55.75

LOT 8 ... PBRs GITTY 9225G ET

50% Lim-Flex Heifer | LFF 2274590 | PBRs 9225 | 09.14.2019 | HP/ Red



Sire, MAGSWL Usual Suspect 538U



Dam, J6 Tempest B300

MAGS SASQUATCH
MAGSWL USUAL SUSPECT 538U
 MAGS PHANTOMS PRIZE
 WEBR TC CARD SHARK 1015
J6 TEMPEST B300
 SLGN STONY'S TEMPEST 778T

EXLR NEW GENERATION 071M
 MAGS FRUITFUL 487M
 GPFF BLAQUE RULON
 ALCM KOOK TUNES
 WEBR DOC HOLIDAY 2N
 PFFR MS NYACK 237
 SLGN REGULATOR 503R
 LCC STONY LA996

A.I. 12.03.20 to WZRK Game Changer 4015G (NPM2161929 - Purebred, red, homo polled son of HUNT Credentials 37C)
 P.E. to J6 Jagger 120G (RAAA4055256 - Six Mile & Co. Jagger 780A x JKC Berry Advance 36W).

PBRs Gitty 9225G is from the MAGSWL Usual Suspect 538U x J6 Tempest B300 mating. Her milk figure of 25 ranks in the top 15% of the breed. She is homozygous polled and 50% Lim-Flex. This female offers such an elegant look from the profile with the right amount of muscle expression, rib shape and center volume. She has the pieces to be one heck of a producer, especially with the influence of these two high capacity individuals.

CED	11
BW	-0.7
WW	54
YW	84
MK	26
CEM	-
SC	-
DOC	12
YG	-0.21
CW	16
REA	0.61
MB	0.25
SMTI	57.18



Sire, Wulf's Emprize 2424E



Dam, J6 Tempest B300

Four embryos from the Wulfs Emprize 2424E x J6 Tempest B300 mating. Truly a notable mating of two highly influential cow families! We expect these future calves to set the standard of their contemporaries with genetic and phenotypic excellence in any scenario. Wulfs Emprize 2424E is the Bieber Deep End B597 son from a WZRK Genesis 532E female, Wulfs Zuni 2424Z. His debut captured the attention of many at the 2019 A Night On The Town Sale II as Lot 1, including ours. J6 Tempest B300 is one of the most prolific Red Angus donors in the business. She is a daughter of WEBR Card Shark 1015 and out of the great SLGN Stony's Tempest 778T female. Talk about excellence from any direction you can imagine! You'll want these embryos in your possession and yours only at the conclusion of this sale. Don't let this unique opportunity slide by!

WULFS EMPRIZE 2424E
 BIEBER DEEP END B597
 WULFS ZUNI 2424Z

J6 TEMPEST B300
 WEBR TC CARD SHARK 1015
 SLGN STONY'S TEMPEST 778T

BIEBER ROLLIN DEEP Y118
 BIEBER LAURA 158W
 WZRK GENESIS 532E
 WULFS PLEASURE 4251P
 WEBR DOC HOLLIDAY 2N
 PFFR MS NYACK 237
 SLGN REGULATOR 503R
 LCC STONY LA996

	SIRE	DAM
CED	11	11
BW	0.0	-2.9
WW	80	49
YW	131	86
MK	22	26
CEM	8	8
SC	1.5	-
DOC	13	19
YG	-0.34	0.03
CW	53	18
REA	1.17	0.18
MB	0.46	0.20
SMTI	73.78	52.13